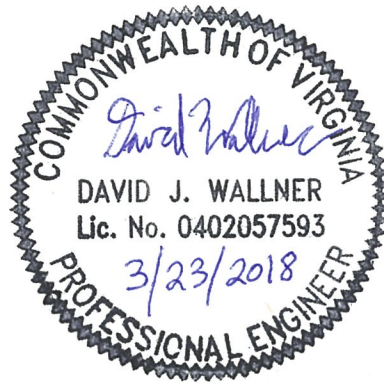
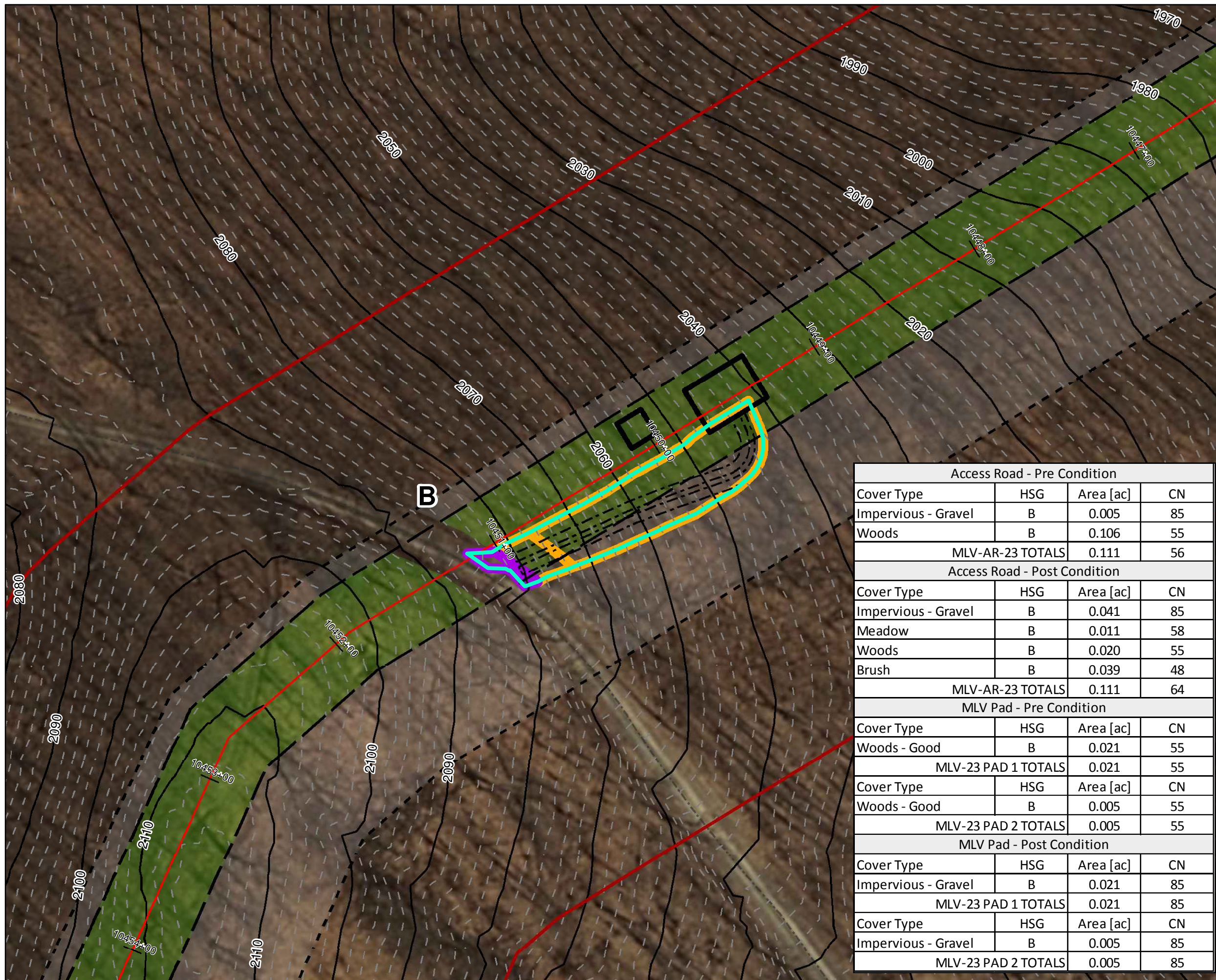


By virtue of this seal and signature, all supporting documents included in this package are accurate and support the design presented herein.







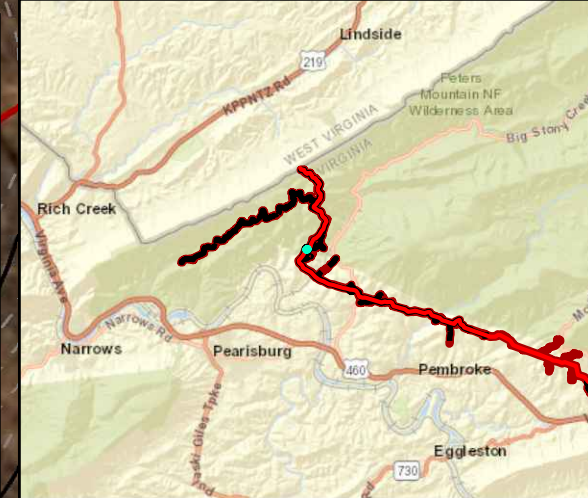
### Legend

- Streams
- Stationing
- Alignment Centerline
- Permanent Easement
- Limit of Disturbance
- MLV Pad
- New Access Road
- Access Road Drainage Area
- 100-year Floodplain
- Pond
- Wetland
- Hydrologic Soil Groups
- 100 ft Buffer off of Limits of Disturbance
- Agricultural
- Barren
- Brush
- Meadow
- Agricultural
- Forest
- Existing Impervious
- Meadow
- State Road Centerline
- 10-foot Contour
- 2-foot Contour

NAD 1983 UTM 17N (feet)

1 in = 50 feet

| Access Road - Pre Condition  |     |           |    |
|------------------------------|-----|-----------|----|
| Cover Type                   | HSG | Area [ac] | CN |
| Impervious - Gravel          | B   | 0.005     | 85 |
| Woods                        | B   | 0.106     | 55 |
| MLV-AR-23 TOTALS             |     | 0.111     | 56 |
| Access Road - Post Condition |     |           |    |
| Cover Type                   | HSG | Area [ac] | CN |
| Impervious - Gravel          | B   | 0.041     | 85 |
| Meadow                       | B   | 0.011     | 58 |
| Woods                        | B   | 0.020     | 55 |
| Brush                        | B   | 0.039     | 48 |
| MLV-AR-23 TOTALS             |     | 0.111     | 64 |
| MLV Pad - Pre Condition      |     |           |    |
| Cover Type                   | HSG | Area [ac] | CN |
| Woods - Good                 | B   | 0.021     | 55 |
| MLV-23 PAD 1 TOTALS          |     | 0.021     | 55 |
| Cover Type                   | HSG | Area [ac] | CN |
| Woods - Good                 | B   | 0.005     | 55 |
| MLV-23 PAD 2 TOTALS          |     | 0.005     | 55 |
| MLV Pad - Post Condition     |     |           |    |
| Cover Type                   | HSG | Area [ac] | CN |
| Impervious - Gravel          | B   | 0.021     | 85 |
| MLV-23 PAD 1 TOTALS          |     | 0.021     | 85 |
| Cover Type                   | HSG | Area [ac] | CN |
| Impervious - Gravel          | B   | 0.005     | 85 |
| MLV-23 PAD 2 TOTALS          |     | 0.005     | 85 |



## Mountain Valley Pipeline Project

### New Impervious Cover Stormwater Drainage Exhibits

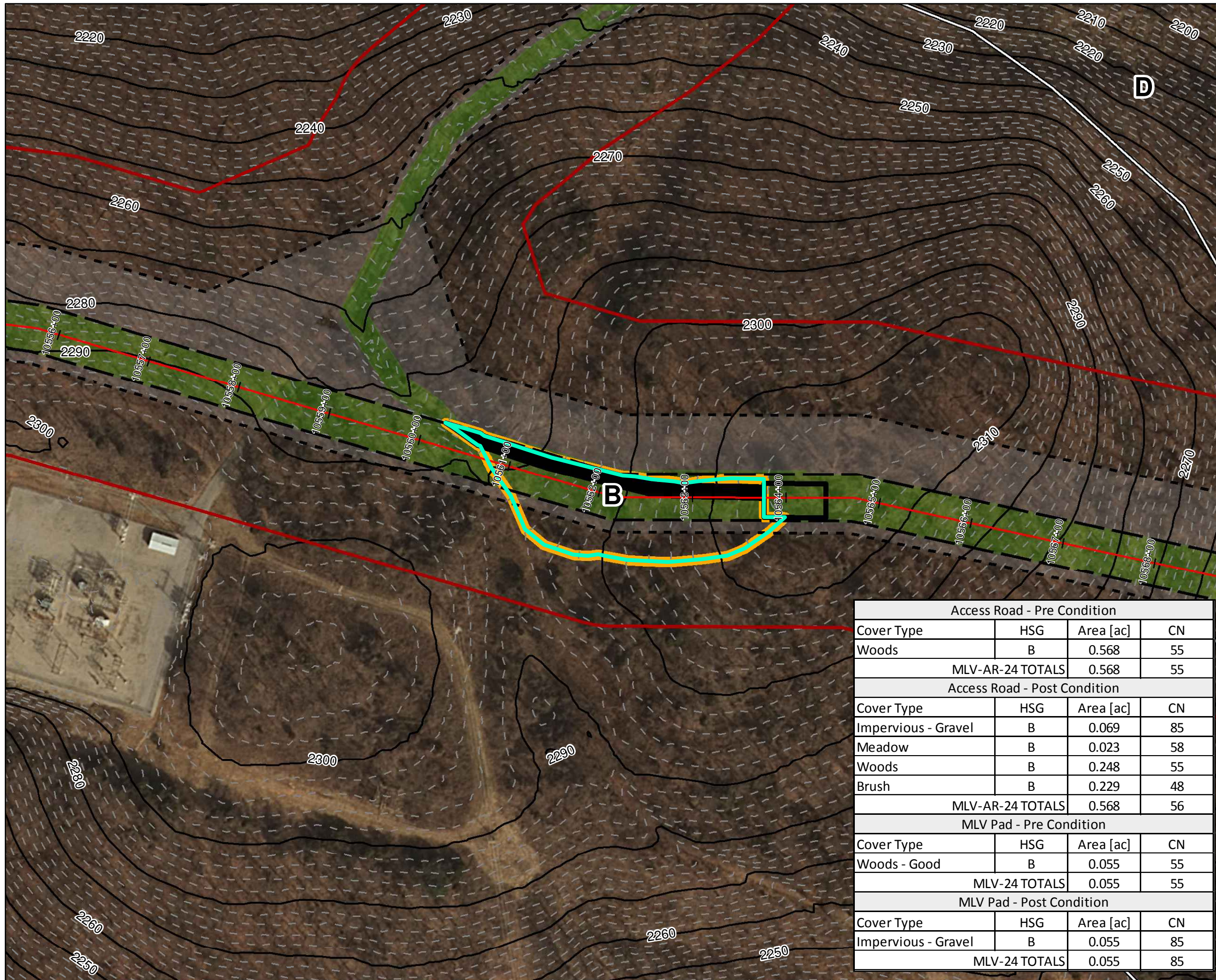
#### MLV-23 Spread 8

Figure 001  
Giles County, Virginia  
March, 2018

Data Sources: Imagery from ESRI Streaming Data 2014, Delineated streams surveyed by Tetra Tech Inc. 2014 to 2017, Transportation data from VITA map layer 2016, Elevation data derived from LiDAR provided by EQT 2016, Soils from NRCS Gridded Soil Survey Geographic (SSURGO) database 2014, Land Use digitized from ESRI World Imagery 2015, Agricultural Area from National Land Cover Dataset 2011.

Document Path: P:\GIS\EQT\_MVP\Mapdocs\Drainage\MVP\_Stormwater\Drainage\_Exhibits\AccessRoad.mxd



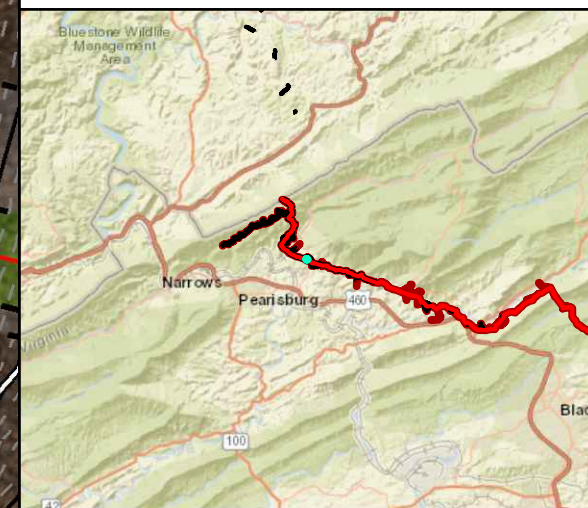


**Legend**

- Streams
- Stationing
- Alignment Centerline
- Permanent Easement
- Limit of Disturbance
- MLV Pad
- New Access Road
- Access Road Drainage Area
- 100-year Floodplain
- Pond
- Wetland
- Hydrologic Soil Groups
- 100 ft Buffer off of Limits of Disturbance
- Agricultural
- Barren
- Brush
- Meadow
- Agricultural
- Forest
- Existing Impervious
- Meadow
- State Road Centerline
- 10-foot Contour
- 2-foot Contour

NAD 1983 UTM 17N (feet)

1 in = 100 feet



| Access Road - Pre Condition  |     |              |           |
|------------------------------|-----|--------------|-----------|
| Cover Type                   | HSG | Area [ac]    | CN        |
| Woods                        | B   | 0.568        | 55        |
| <b>MLV-AR-24 TOTALS</b>      |     | <b>0.568</b> | <b>55</b> |
| Access Road - Post Condition |     |              |           |
| Cover Type                   | HSG | Area [ac]    | CN        |
| Impervious - Gravel          | B   | 0.069        | 85        |
| Meadow                       | B   | 0.023        | 58        |
| Woods                        | B   | 0.248        | 55        |
| Brush                        | B   | 0.229        | 48        |
| <b>MLV-AR-24 TOTALS</b>      |     | <b>0.568</b> | <b>56</b> |
| MLV Pad - Pre Condition      |     |              |           |
| Cover Type                   | HSG | Area [ac]    | CN        |
| Woods - Good                 | B   | 0.055        | 55        |
| <b>MLV-24 TOTALS</b>         |     | <b>0.055</b> | <b>55</b> |
| MLV Pad - Post Condition     |     |              |           |
| Cover Type                   | HSG | Area [ac]    | CN        |
| Impervious - Gravel          | B   | 0.055        | 85        |
| <b>MLV-24 TOTALS</b>         |     | <b>0.055</b> | <b>85</b> |

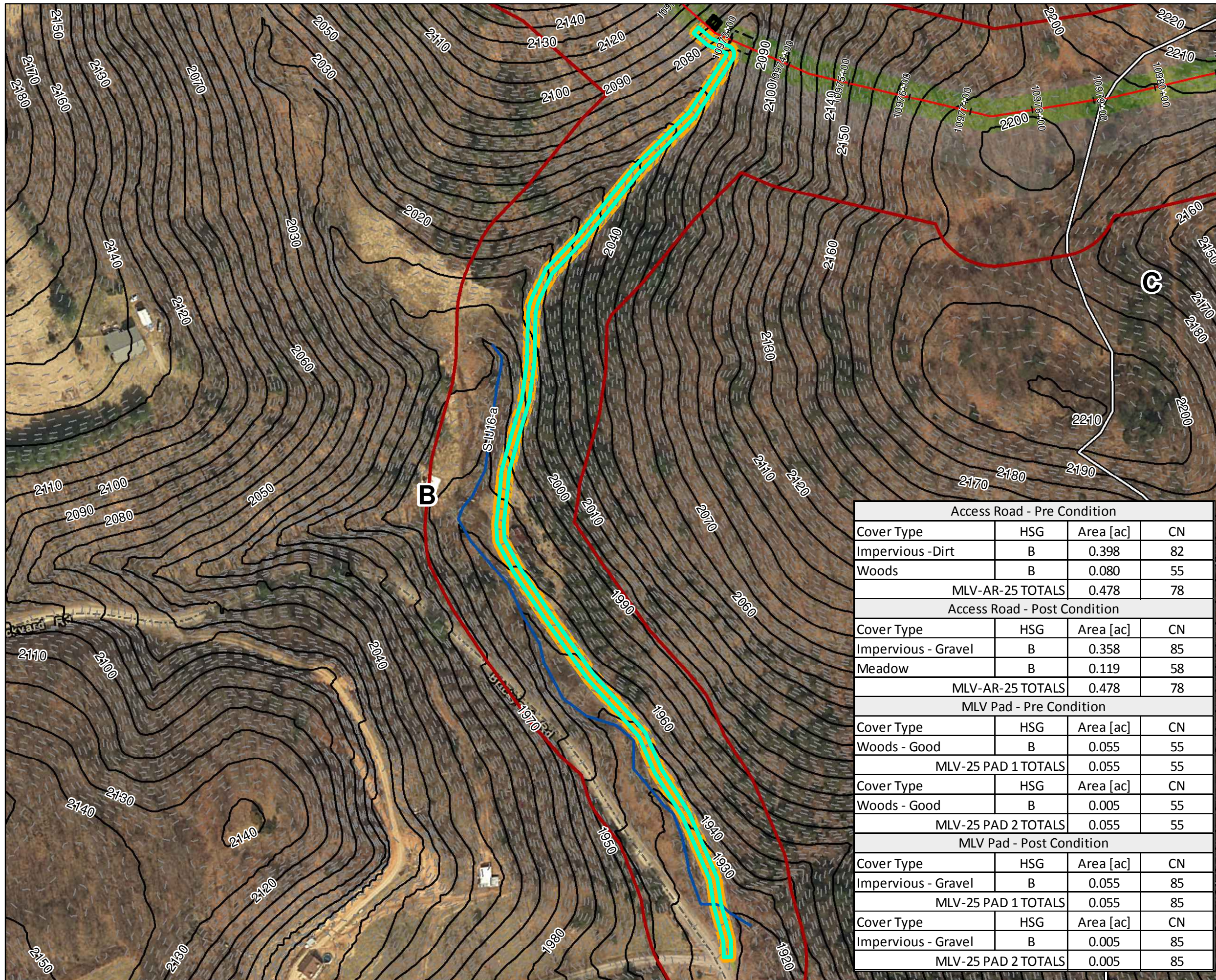
**Mountain Valley Pipeline Project**

**New Impervious Cover Stormwater Drainage Exhibits**  
**MLV-24 Spread 8**  
 Figure 002  
 Giles County, Virginia  
 March, 2018

Data Sources: Imagery from ESRI Streaming Data 2014, Delineated streams surveyed by Tetra Tech Inc. 2014 to 2017, Transportation data from VITA map layer 2016, Elevation data derived from LiDAR provided by EQT 2016, Soils from NRCS Gridded Soil Survey Geographic (SSURGO) database 2014, Land Use digitized from ESRI World Imagery 2015, Agricultural Area from National Land Cover Dataset 2011.

Document Path: P:\GIS\ECOT\_MVP\Mapdocs\Drainage\MVP\_Stormwater\Drainage\_Exhibit\_AccessRoad.mxd





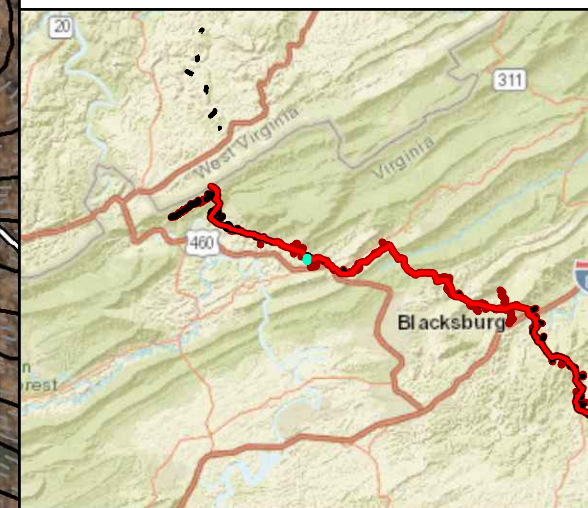
**Legend**

- Streams
- Stationing
- Alignment Centerline
- Permanent Easement
- Limit of Disturbance
- MLV Pad
- New Access Road
- Access Road Drainage Area
- 100-year Floodplain
- Pond
- Wetland
- Hydrologic Soil Groups
- 100 ft Buffer off of Limits of Disturbance
- Agricultural
- Barren
- Brush
- Meadow
- Agricultural
- Forest
- Existing Impervious
- Meadow
- State Road Centerline
- 10-foot Contour
- 2-foot Contour

NAD 1983 UTM 17N (feet)

1 in = 150 feet

50 25 0 50 Feet



| Access Road - Pre Condition  |     |           |    |
|------------------------------|-----|-----------|----|
| Cover Type                   | HSG | Area [ac] | CN |
| Impervious - Dirt            | B   | 0.398     | 82 |
| Woods                        | B   | 0.080     | 55 |
| MLV-AR-25 TOTALS             |     | 0.478     | 78 |
| Access Road - Post Condition |     |           |    |
| Cover Type                   | HSG | Area [ac] | CN |
| Impervious - Gravel          | B   | 0.358     | 85 |
| Meadow                       | B   | 0.119     | 58 |
| MLV-AR-25 TOTALS             |     | 0.478     | 78 |
| MLV Pad - Pre Condition      |     |           |    |
| Cover Type                   | HSG | Area [ac] | CN |
| Woods - Good                 | B   | 0.055     | 55 |
| MLV-25 PAD 1 TOTALS          |     | 0.055     | 55 |
| Cover Type                   | HSG | Area [ac] | CN |
| Woods - Good                 | B   | 0.005     | 55 |
| MLV-25 PAD 2 TOTALS          |     | 0.055     | 55 |
| MLV Pad - Post Condition     |     |           |    |
| Cover Type                   | HSG | Area [ac] | CN |
| Impervious - Gravel          | B   | 0.055     | 85 |
| MLV-25 PAD 1 TOTALS          |     | 0.055     | 85 |
| Cover Type                   | HSG | Area [ac] | CN |
| Impervious - Gravel          | B   | 0.005     | 85 |
| MLV-25 PAD 2 TOTALS          |     | 0.005     | 85 |

**Mountain Valley Pipeline Project**

**New Impervious Cover Stormwater Drainage Exhibits**

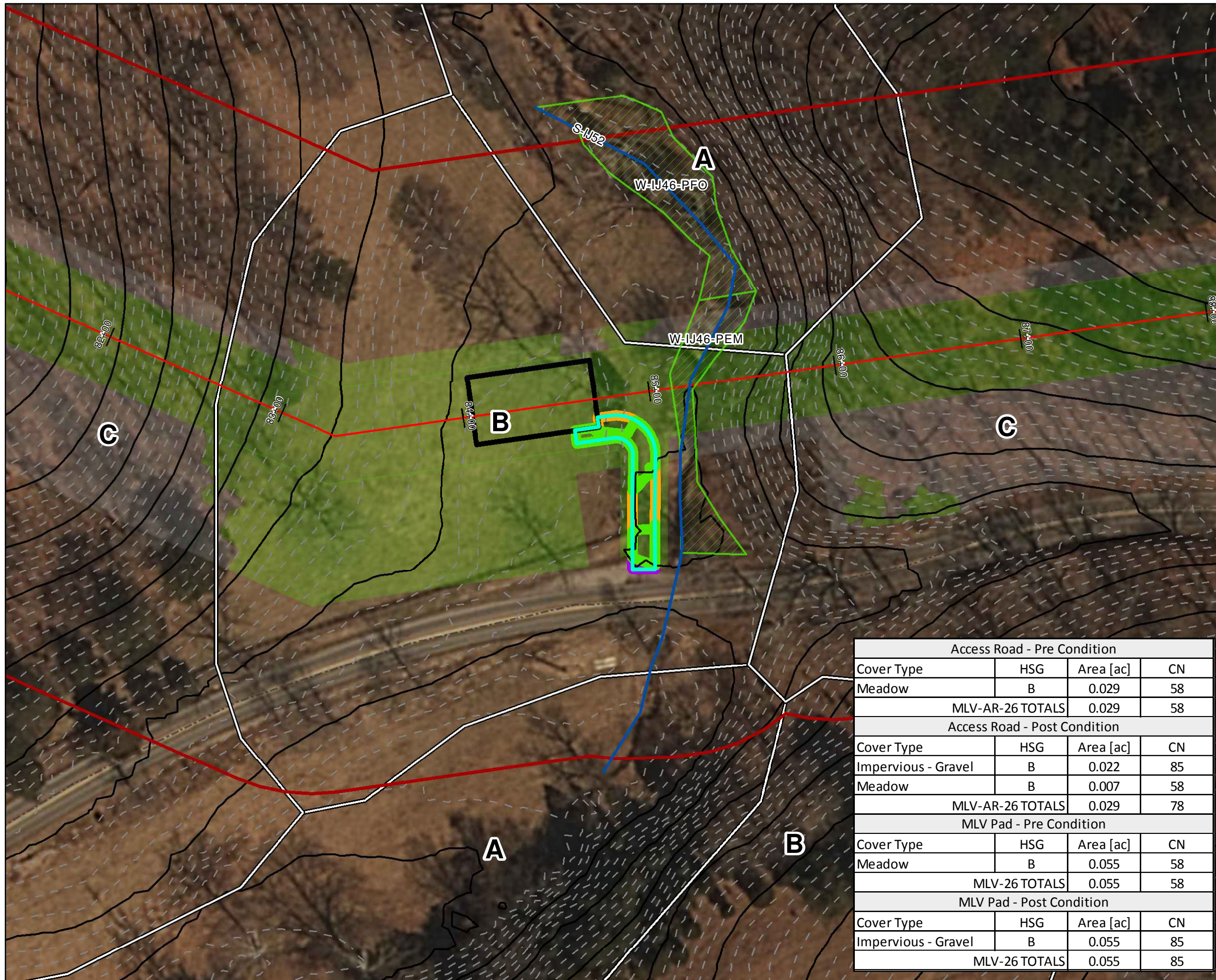
**MLV-25 Spread 9**

Figure 003  
Giles County, Virginia  
March, 2018

Data Sources: Imagery from ESRI Streaming Data 2014, Delineated streams surveyed by Tetra Tech Inc. 2014 to 2017, Transportation data from VITA map layer 2016, Elevation data derived from LiDAR provided by EQT 2016, Soils from NRCS Gridded Soil Survey Geographic (SSURGO) database 2014, Land Use digitized from ESRI World Imagery 2015, Agricultural Area from National Land Cover Dataset 2011.

Document Path: P:\GIS\ECOT\_MVP\MapDocs\Drainage\MVP\_Stormwater\Drainage\_Exhibits\AccessRoad.mxd



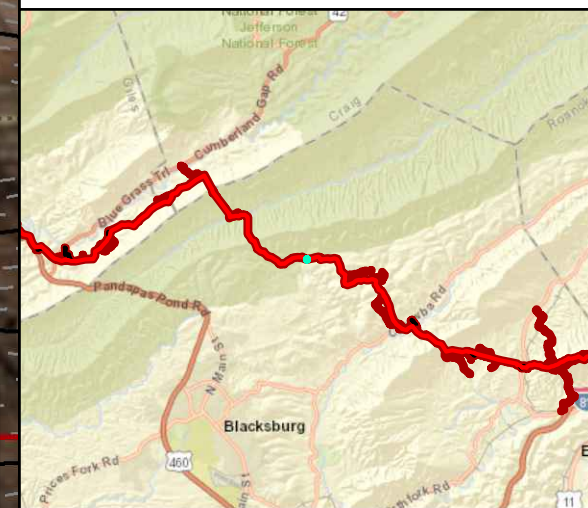


**Legend**

- Streams
- Stationing
- Alignment Centerline
- Permanent Easement
- Limit of Disturbance
- MLV Pad
- New Access Road
- Access Road Drainage Area
- 100-year Floodplain
- Pond
- Wetland
- Hydrologic Soil Groups
- 100 ft Buffer off of Limits of Disturbance
- Agricultural
- Barren
- Brush
- Meadow
- Agricultural
- Forest
- Existing Impervious
- Meadow
- State Road Centerline
- 10-foot Contour
- 2-foot Contour

NAD 1983 UTM 17N (feet)

1 in = 50 feet



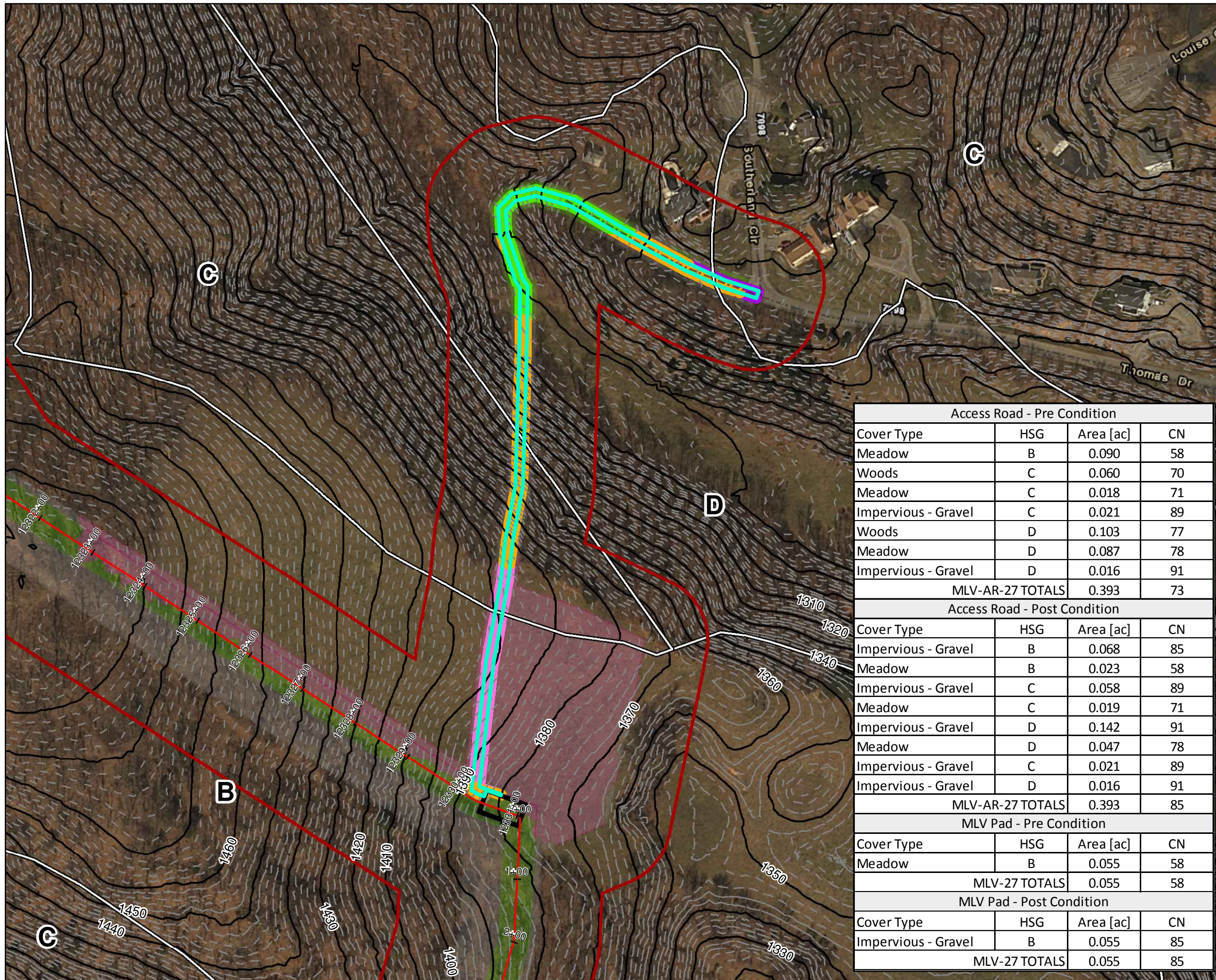
| Access Road - Pre Condition  |     |              |           |
|------------------------------|-----|--------------|-----------|
| Cover Type                   | HSG | Area [ac]    | CN        |
| Meadow                       | B   | 0.029        | 58        |
| <b>MLV-AR-26 TOTALS</b>      |     | <b>0.029</b> | <b>58</b> |
| Access Road - Post Condition |     |              |           |
| Cover Type                   | HSG | Area [ac]    | CN        |
| Impervious - Gravel          | B   | 0.022        | 85        |
| Meadow                       | B   | 0.007        | 58        |
| <b>MLV-AR-26 TOTALS</b>      |     | <b>0.029</b> | <b>78</b> |
| MLV Pad - Pre Condition      |     |              |           |
| Cover Type                   | HSG | Area [ac]    | CN        |
| Meadow                       | B   | 0.055        | 58        |
| <b>MLV-26 TOTALS</b>         |     | <b>0.055</b> | <b>58</b> |
| MLV Pad - Post Condition     |     |              |           |
| Cover Type                   | HSG | Area [ac]    | CN        |
| Impervious - Gravel          | B   | 0.055        | 85        |
| <b>MLV-26 TOTALS</b>         |     | <b>0.055</b> | <b>85</b> |

**Mountain Valley Pipeline Project**

**New Impervious Cover Stormwater Drainage Exhibits**  
**MLV-26 Spread 9**  
 Figure 004  
 Montgomery County, Virginia  
 March, 2018

Data Sources: Imagery from ESRI Streaming Data 2014, Delineated streams surveyed by Tetra Tech Inc. 2014 to 2017, Transportation data from VITA map layer 2016, Elevation data derived from LiDAR provided by EQT 2016, Soils from NRCS Gridded Soil Survey Geographic (SSURGO) database 2014, Land Use digitized from ESRI World Imagery 2015, Agricultural Area from National Land Cover Dataset 2011.





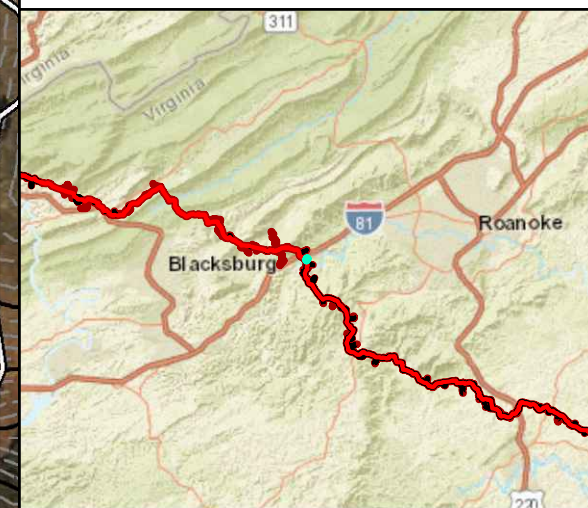
### Legend

- Streams
- Stationing
- Alignment Centerline
- Permanent Easement
- Limit of Disturbance
- MLV Pad
- New Access Road
- Access Road Drainage Area
- 100-year Floodplain
- Pond
- Wetland
- Hydrologic Soil Groups
- 100 ft Buffer off of Limits of Disturbance
- Agricultural
- Barren
- Brush
- Meadow
- Agricultural
- Forest
- Existing Impervious
- Meadow
- State Road Centerline
- 10-foot Contour
- 2-foot Contour
- 10-foot Contour
- 2-foot Contour

NAD 1983 UTM 17N (feet)

1 in = 150 feet

50 25 0 50 Feet



#### Access Road - Pre Condition

| Cover Type              | HSG | Area [ac]    | CN        |
|-------------------------|-----|--------------|-----------|
| Meadow                  | B   | 0.090        | 58        |
| Woods                   | C   | 0.060        | 70        |
| Meadow                  | C   | 0.018        | 71        |
| Impervious - Gravel     | C   | 0.021        | 89        |
| Woods                   | D   | 0.103        | 77        |
| Meadow                  | D   | 0.087        | 78        |
| Impervious - Gravel     | D   | 0.016        | 91        |
| <b>MLV-AR-27 TOTALS</b> |     | <b>0.393</b> | <b>73</b> |

#### Access Road - Post Condition

| Cover Type              | HSG | Area [ac]    | CN        |
|-------------------------|-----|--------------|-----------|
| Impervious - Gravel     | B   | 0.068        | 85        |
| Meadow                  | B   | 0.023        | 58        |
| Impervious - Gravel     | C   | 0.058        | 89        |
| Meadow                  | C   | 0.019        | 71        |
| Impervious - Gravel     | D   | 0.142        | 91        |
| Meadow                  | D   | 0.047        | 78        |
| Impervious - Gravel     | C   | 0.021        | 89        |
| Impervious - Gravel     | D   | 0.016        | 91        |
| <b>MLV-AR-27 TOTALS</b> |     | <b>0.393</b> | <b>85</b> |

#### MLV Pad - Pre Condition

| Cover Type           | HSG | Area [ac]    | CN        |
|----------------------|-----|--------------|-----------|
| Meadow               | B   | 0.055        | 58        |
| <b>MLV-27 TOTALS</b> |     | <b>0.055</b> | <b>58</b> |

#### MLV Pad - Post Condition

| Cover Type           | HSG | Area [ac]    | CN        |
|----------------------|-----|--------------|-----------|
| Impervious - Gravel  | B   | 0.055        | 85        |
| <b>MLV-27 TOTALS</b> |     | <b>0.055</b> | <b>85</b> |

### Mountain Valley Pipeline Project



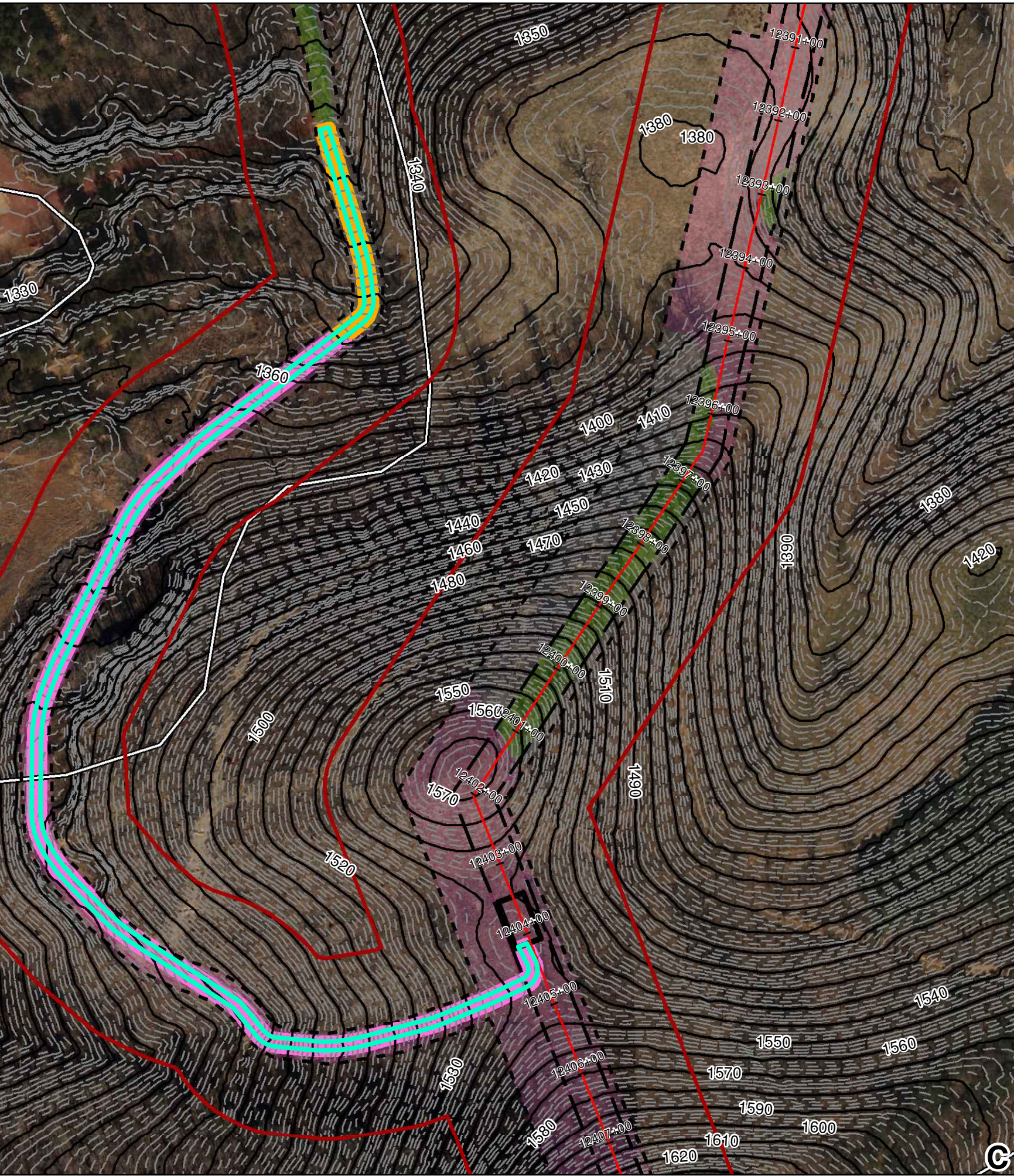
#### New Impervious Cover Stormwater Drainage Exhibits MLV-27 Spread 9

Figure 005  
Roanoke County, Virginia  
March, 2018

Data Sources: Imagery from ESRI Streaming Data 2014, Delineated streams surveyed by Tetra Tech Inc. 2014 to 2017, Transportation data from VITA map layer 2016, Elevation data derived from LiDAR provided by EQT 2016, Soils from NRCS Gridded Soil Survey Geographic (SSURGO) database 2014, Land Use digitized from ESRI World Imagery 2015, Agricultural Area from National Land Cover Dataset 2011.



| Access Road - Pre Condition  |     |           |    |
|------------------------------|-----|-----------|----|
| Cover Type                   | HSG | Area [ac] | CN |
| Woods                        | B   | 0.178     | 55 |
| Impervious - Dirt            | B   | 0.073     | 82 |
| Woods                        | D   | 0.072     | 77 |
| Impervious - Dirt            | D   | 0.216     | 89 |
| MLV-AR-28 TOTALS             |     | 0.539     | 75 |
| Access Road - Post Condition |     |           |    |
| Cover Type                   | HSG | Area [ac] | CN |
| Impervious - Gravel          | B   | 0.188     | 85 |
| Meadow                       | B   | 0.063     | 58 |
| Impervious - Gravel          | D   | 0.216     | 91 |
| Meadow                       | D   | 0.070     | 78 |
| MLV-AR-28 TOTALS             |     | 0.537     | 83 |
| MLV Pad - Pre Condition      |     |           |    |
| Cover Type                   | HSG | Area [ac] | CN |
| Woods - Good                 | B   | 0.055     | 55 |
| MLV-28 TOTALS                |     | 0.055     | 55 |
| MLV Pad - Post Condition     |     |           |    |
| Cover Type                   | HSG | Area [ac] | CN |
| Impervious - Gravel          | B   | 0.055     | 85 |
| MLV-28 TOTALS                |     | 0.055     | 85 |

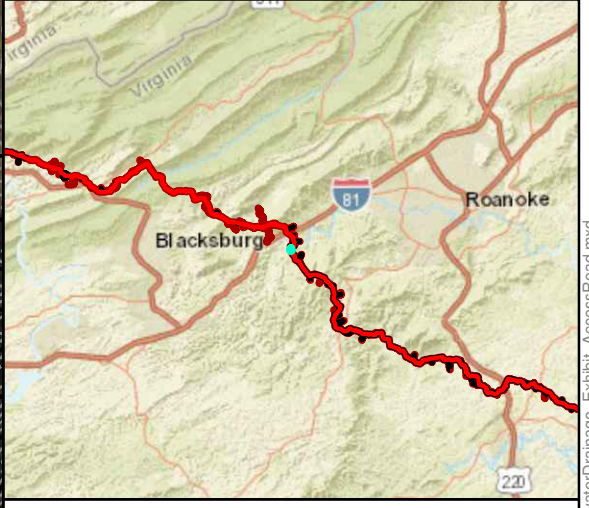


### Legend

- Streams
- Stationing
- Alignment Centerline
- Permanent Easement
- Limit of Disturbance
- MLV Pad
- New Access Road
- Access Road Drainage Area
- 100-year Floodplain
- Pond
- Wetland
- Hydrologic Soil Groups
- 100 ft Buffer off of Limits of Disturbance
- Agricultural
- Barren
- Brush
- Meadow
- Agricultural
- Forest
- Existing Impervious
- Meadow
- State Road Centerline
- 10-foot Contour
- 2-foot Contour
- 10-foot Contour
- 2-foot Contour

NAD 1983 UTM 17N (feet)

1 in = 150 feet



## Mountain Valley Pipeline Project

### New Impervious Cover Stormwater Drainage Exhibits

#### MLV-28 Spread 10

Figure 006  
Montgomery County, Virginia  
March, 2018

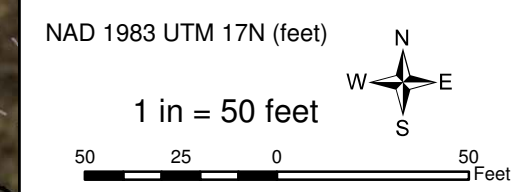
Data Sources: Imagery from ESRI Streaming Data 2014, Delineated streams surveyed by Tetra Tech Inc. 2014 to 2017, Transportation data from VITA map layer 2016, Elevation data derived from LIDAR provided by EQT 2016, Soils from NRCS Gridded Soil Survey Geographic (SSURGO) database 2014, Land Use digitized from ESRI World Imagery 2015, Agricultural Area from National Land Cover Dataset 2011.

Document Path: P:\GIS\ECOT\_MVP\MapDocs\Drainage\MXD\MVP\_Stormwater\Drainage\_Exhibits\AccessRoad.mxd



| Access Road - Pre Condition  |     |           |    |
|------------------------------|-----|-----------|----|
| Cover Type                   | HSG | Area [ac] | CN |
| Woods                        | B   | 0.007     | 55 |
| MLV-AR-29 TOTALS             |     | 0.007     | 55 |
| Access Road - Post Condition |     |           |    |
| Cover Type                   | HSG | Area [ac] | CN |
| Impervious - Gravel          | B   | 0.005     | 85 |
| Meadow                       | B   | 0.002     | 58 |
| MLV-AR-29 TOTALS             |     | 0.007     | 78 |
| MLV Pad - Pre Condition      |     |           |    |
| Cover Type                   | HSG | Area [ac] | CN |
| Woods - Good                 | B   | 0.055     | 55 |
| MLV-29 TOTALS                |     | 0.055     | 55 |
| MLV Pad - Post Condition     |     |           |    |
| Cover Type                   | HSG | Area [ac] | CN |
| Impervious - Gravel          | B   | 0.055     | 85 |
| MLV-29 TOTALS                |     | 0.055     | 85 |

- Legend**
- Streams
  - Stationing
  - Alignment Centerline
  - Permanent Easement
  - Limit of Disturbance
  - MLV Pad
  - New Access Road
  - Access Road Drainage Area
  - 100-year Floodplain
  - Pond
  - Wetland
  - Hydrologic Soil Groups
  - 100 ft Buffer off of Limits of Disturbance
  - Agricultural
  - Barren
  - Brush
  - Meadow
  - Agricultural
  - Forest
  - Existing Impervious
  - Meadow
  - State Road Centerline
  - 10-foot Contour
  - 2-foot Contour



**Mountain Valley Pipeline Project**



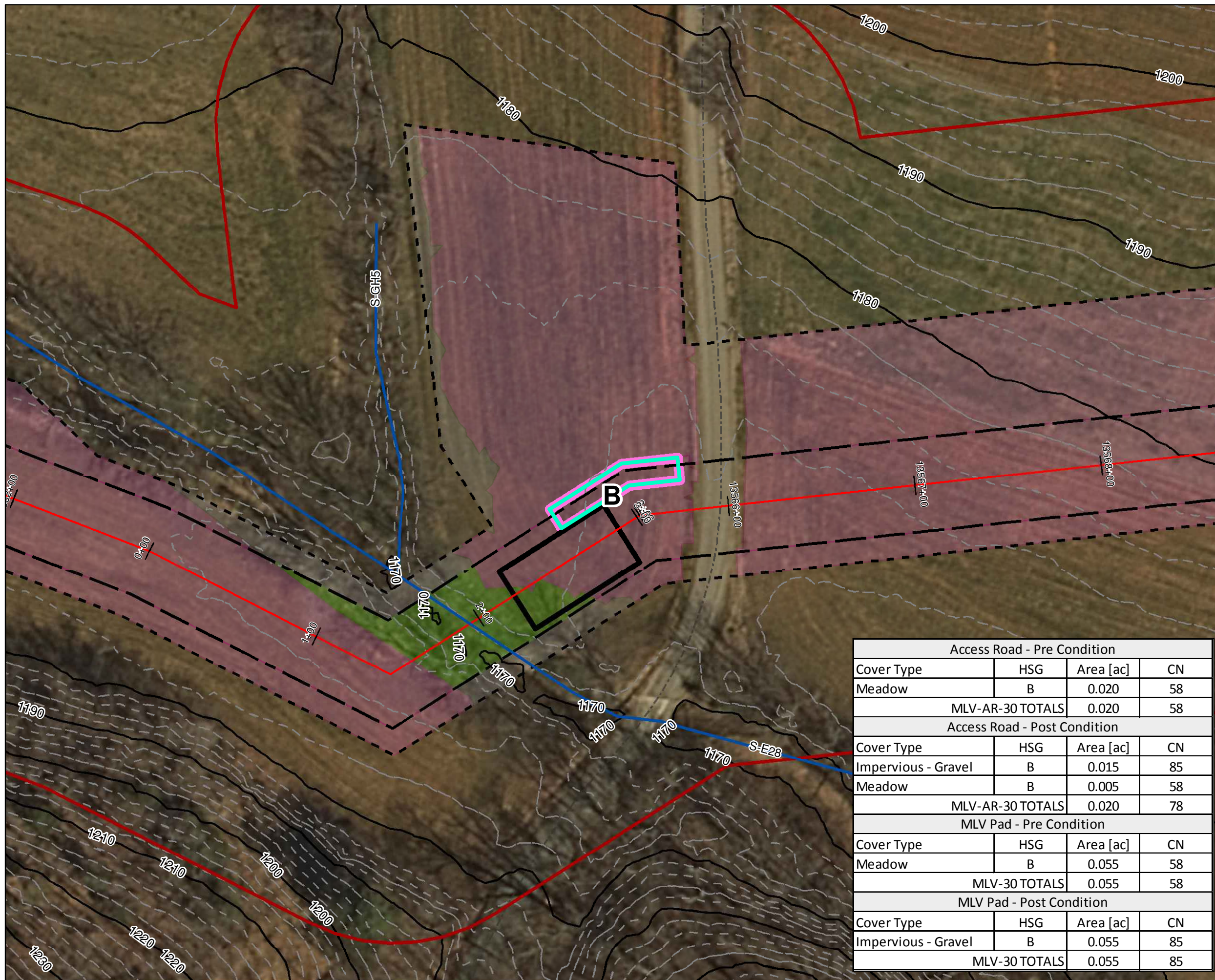
**New Impervious Cover  
Stormwater Drainage Exhibits  
MLV-29  
Spread 10**

Figure 007  
Franklin County, Virginia  
March, 2018

Data Sources: Imagery from ESRI Streaming Data 2014, Delineated streams surveyed by Tetra Tech Inc. 2014 to 2017, Transportation data from VITA map layer 2016, Elevation data derived from LiDAR provided by EQT 2016, Soils from NRCS Gridded Soil Survey Geographic (SSURGO) database 2014, Land Use digitized from ESRI World Imagery 2015, Agricultural Area from National Land Cover Dataset 2011.

Document Path: P:\GIS\EQT\_MVP\Mapdocs\Drainage\MXD\MVP\_Stormwater\Drainage\_Exhibits\AccessRoad.mxd



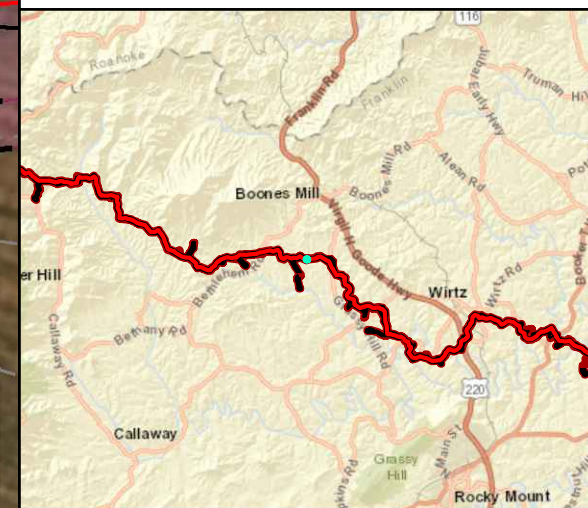


### Legend

- Streams
- Stationing
- Alignment Centerline
- Permanent Easement
- Limit of Disturbance
- MLV Pad
- New Access Road
- Access Road Drainage Area
- 100-year Floodplain
- Pond
- Wetland
- Hydrologic Soil Groups
- 100 ft Buffer off of Limits of Disturbance
- Agricultural
- Barren
- Brush
- Meadow
- Agricultural
- Forest
- Existing Impervious
- Meadow
- State Road Centerline
- 10-foot Contour
- 2-foot Contour

NAD 1983 UTM 17N (feet)

1 in = 50 feet



| Access Road - Pre Condition  |     |           |    |
|------------------------------|-----|-----------|----|
| Cover Type                   | HSG | Area [ac] | CN |
| Meadow                       | B   | 0.020     | 58 |
| MLV-AR-30 TOTALS             |     | 0.020     | 58 |
| Access Road - Post Condition |     |           |    |
| Cover Type                   | HSG | Area [ac] | CN |
| Impervious - Gravel          | B   | 0.015     | 85 |
| Meadow                       | B   | 0.005     | 58 |
| MLV-AR-30 TOTALS             |     | 0.020     | 78 |
| MLV Pad - Pre Condition      |     |           |    |
| Cover Type                   | HSG | Area [ac] | CN |
| Meadow                       | B   | 0.055     | 58 |
| MLV-30 TOTALS                |     | 0.055     | 58 |
| MLV Pad - Post Condition     |     |           |    |
| Cover Type                   | HSG | Area [ac] | CN |
| Impervious - Gravel          | B   | 0.055     | 85 |
| MLV-30 TOTALS                |     | 0.055     | 85 |

## Mountain Valley Pipeline Project

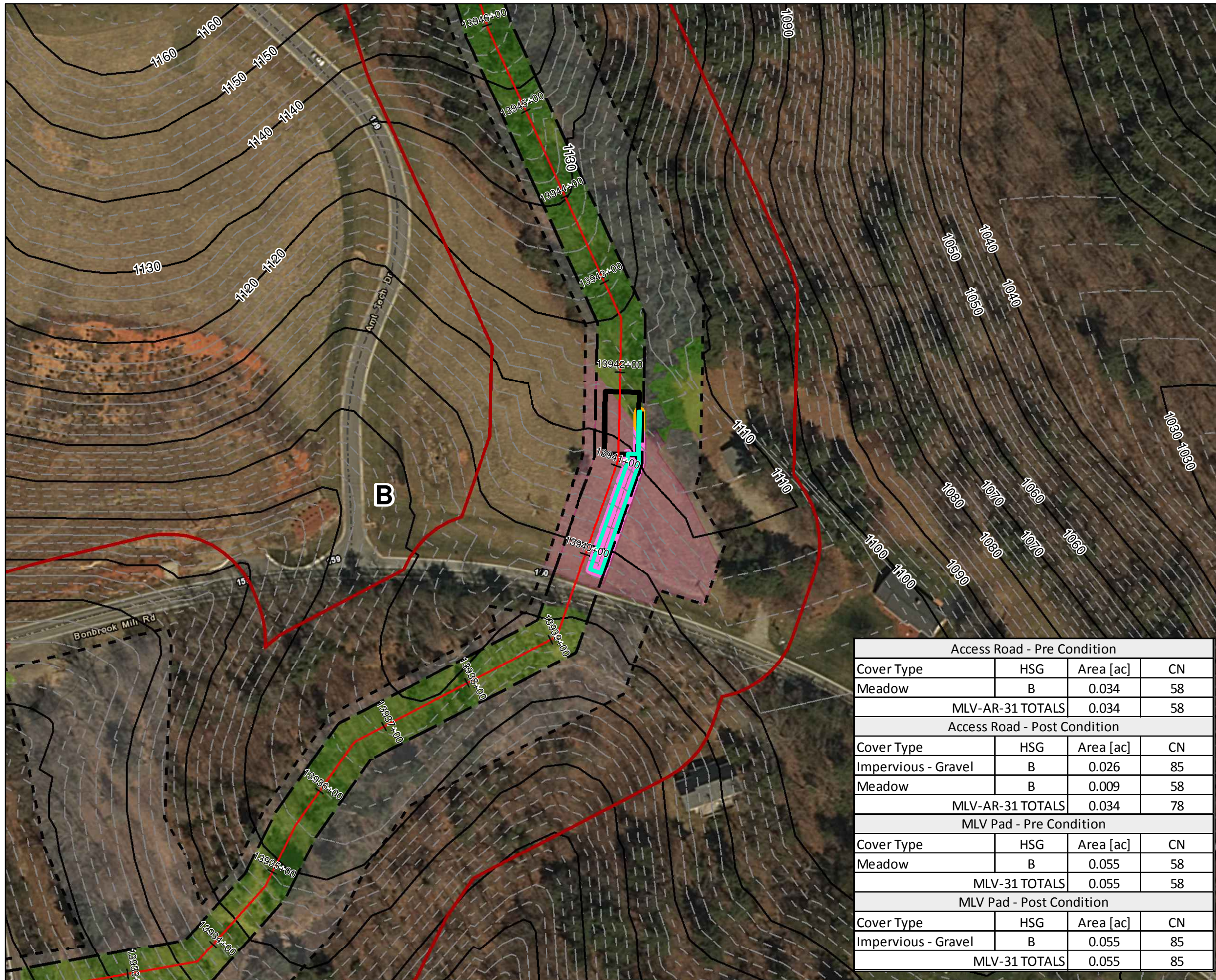
### New Impervious Cover Stormwater Drainage Exhibits

#### MLV-30 Spread 10

Figure 008  
Franklin County, Virginia  
March, 2018

Data Sources: Imagery from ESRI Streaming Data 2014, Delineated streams surveyed by Tetra Tech Inc. 2014 to 2017, Transportation data from VITA map layer 2016, Elevation data derived from LiDAR provided by EQT 2016, Soils from NRCS Gridded Soil Survey Geographic (SSURGO) database 2014, Land Use digitized from ESRI World Imagery 2015, Agricultural Area from National Land Cover Dataset 2011.



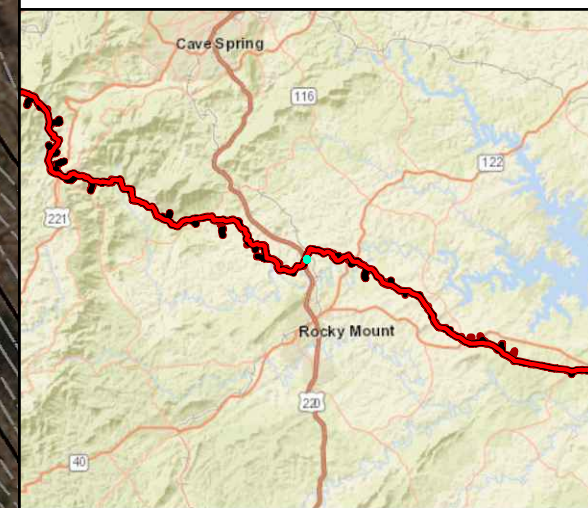


**Legend**

- Streams
- Stationing
- Alignment Centerline
- Permanent Easement
- Limit of Disturbance
- MLV Pad
- New Access Road
- Access Road Drainage Area
- 100-year Floodplain
- Pond
- Wetland
- Hydrologic Soil Groups
- 100 ft Buffer off of Limits of Disturbance
- Agricultural
- Barren
- Brush
- Meadow
- Agricultural
- Forest
- Existing Impervious
- Meadow
- State Road Centerline
- 10-foot Contour
- 2-foot Contour
- 10-foot Contour
- 2-foot Contour

NAD 1983 UTM 17N (feet)

1 in = 100 feet



| Access Road - Pre Condition  |     |           |    |
|------------------------------|-----|-----------|----|
| Cover Type                   | HSG | Area [ac] | CN |
| Meadow                       | B   | 0.034     | 58 |
| MLV-AR-31 TOTALS             |     | 0.034     | 58 |
| Access Road - Post Condition |     |           |    |
| Cover Type                   | HSG | Area [ac] | CN |
| Impervious - Gravel          | B   | 0.026     | 85 |
| Meadow                       | B   | 0.009     | 58 |
| MLV-AR-31 TOTALS             |     | 0.034     | 78 |
| MLV Pad - Pre Condition      |     |           |    |
| Cover Type                   | HSG | Area [ac] | CN |
| Meadow                       | B   | 0.055     | 58 |
| MLV-31 TOTALS                |     | 0.055     | 58 |
| MLV Pad - Post Condition     |     |           |    |
| Cover Type                   | HSG | Area [ac] | CN |
| Impervious - Gravel          | B   | 0.055     | 85 |
| MLV-31 TOTALS                |     | 0.055     | 85 |

**Mountain Valley Pipeline Project**

**New Impervious Cover Stormwater Drainage Exhibits**

**MLV-31 Spread 11**

Figure 009  
Franklin County, Virginia  
March, 2018

Data Sources: Imagery from ESRI Streaming Data 2014, Delineated streams surveyed by Tetra Tech Inc. 2014 to 2017, Transportation data from VITA map layer 2016, Elevation data derived from LiDAR provided by EQT 2016, Soils from NRCS Gridded Soil Survey Geographic (SSURGO) database 2014, Land Use digitized from ESRI World Imagery 2015, Agricultural Area from National Land Cover Dataset 2011.

Document Path: P:\GIS\EQT\_MVP\Mapdocs\Drainage\MVP\_Stormwater\Drainage\_Exhibits\AccessRoad.mxd



| Access Road - Pre Condition  |     |           |    |
|------------------------------|-----|-----------|----|
| Cover Type                   | HSG | Area [ac] | CN |
| Meadow                       | B   | 0.080     | 58 |
| MLV-AR-32 TOTALS             |     | 0.080     | 58 |
| Access Road - Post Condition |     |           |    |
| Cover Type                   | HSG | Area [ac] | CN |
| Impervious - Gravel          | B   | 0.060     | 85 |
| Meadow                       | B   | 0.020     | 58 |
| MLV-AR-32 TOTALS             |     | 0.080     | 78 |
| MLV Pad - Pre Condition      |     |           |    |
| Cover Type                   | HSG | Area [ac] | CN |
| Meadow                       | B   | 0.055     | 58 |
| MLV-32 TOTALS                |     | 0.055     | 58 |
| MLV Pad - Post Condition     |     |           |    |
| Cover Type                   | HSG | Area [ac] | CN |
| Impervious - Gravel          | B   | 0.055     | 85 |
| MLV-32 TOTALS                |     | 0.055     | 85 |

**Legend**

- Streams
- Stationing
- Alignment Centerline
- Permanent Easement
- Limit of Disturbance
- MLV Pad
- New Access Road
- Access Road Drainage Area
- 100-year Floodplain
- Pond
- Wetland
- Hydrologic Soil Groups
- 100 ft Buffer off of Limits of Disturbance
- Agricultural
- Barren
- Brush
- Meadow
- Agricultural
- Forest
- Existing Impervious
- Meadow
- State Road Centerline
- 10-foot Contour
- 2-foot Contour

NAD 1983 UTM 17N (feet)

1 in = 100 feet



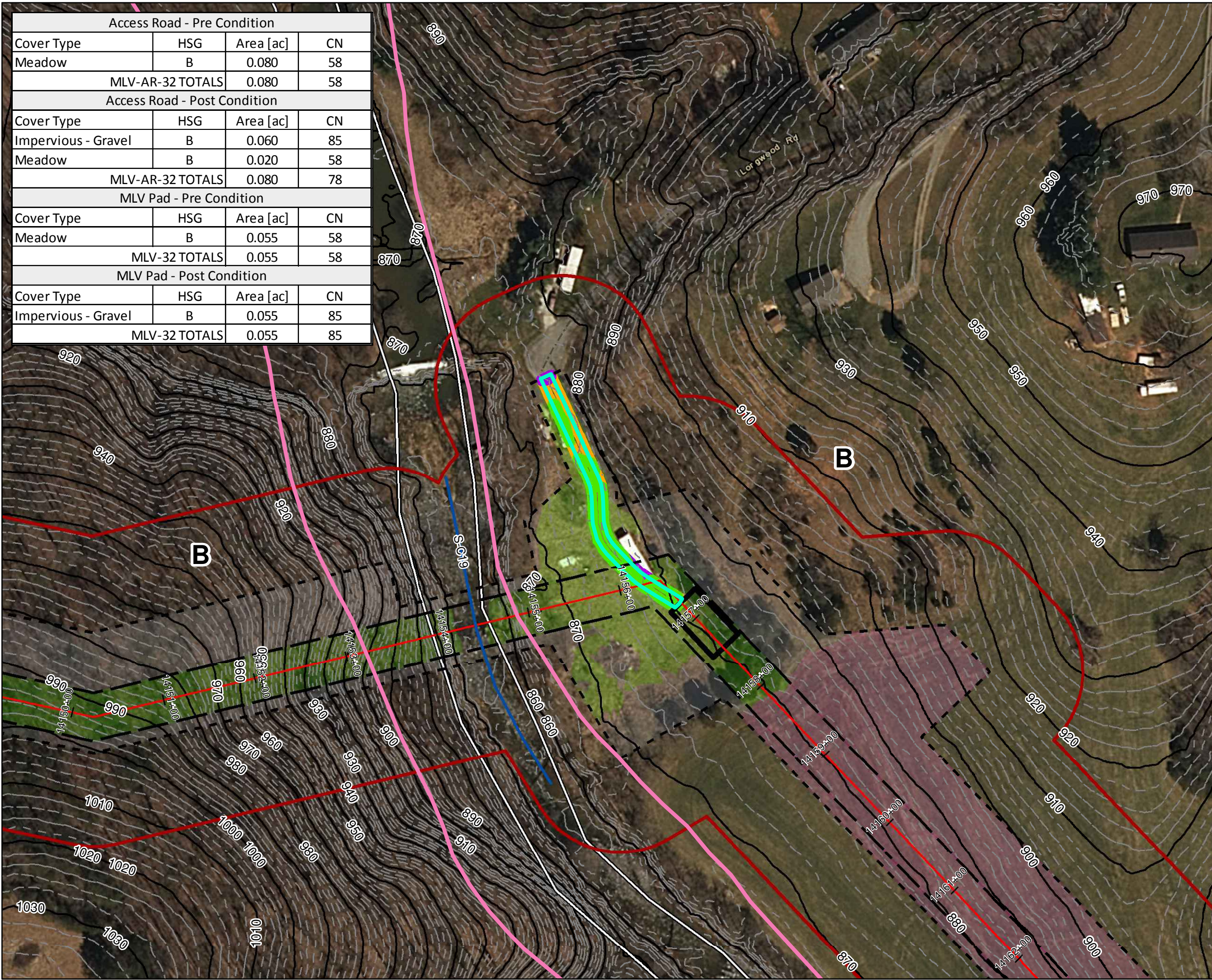
**Mountain Valley Pipeline Project**



**New Impervious Cover  
Stormwater Drainage Exhibits  
MLV-32  
Spread 11**

Figure 010  
Franklin County, Virginia  
March, 2018

Data Sources: Imagery from ESRI Streaming Data 2014, Delineated streams surveyed by Tetra Tech Inc. 2014 to 2017, Transportation data from VITA map layer 2016, Elevation data derived from LIDAR provided by EQT 2016, Soils from NRCS Gridded Soil Survey Geographic (SSURGO) database 2014, Land Use digitized from ESRI World Imagery 2015, Agricultural Area from National Land Cover Dataset 2011.



Document Path: P:\GIS\EQT\_MVP\MapDocs\Drainage\MVP\_Stormwater\Drainage\_Exhibits\AccessRoad.mxd



| Access Road - Pre Condition  |     |           |    |
|------------------------------|-----|-----------|----|
| Cover Type                   | HSG | Area [ac] | CN |
| Meadow                       | B   | 0.023     | 58 |
| Woods                        | B   | 0.010     | 55 |
| MLV-AR-33 TOTALS             |     | 0.032     | 57 |
| Access Road - Post Condition |     |           |    |
| Cover Type                   | HSG | Area [ac] | CN |
| Impervious - Gravel          | B   | 0.024     | 85 |
| Meadow                       | B   | 0.008     | 58 |
| MLV-AR-33 TOTALS             |     | 0.032     | 78 |
| MLV Pad - Pre Condition      |     |           |    |
| Cover Type                   | HSG | Area [ac] | CN |
| Woods - Good                 | B   | 0.055     | 55 |
| MLV-33 TOTALS                |     | 0.055     | 55 |
| MLV Pad - Post Condition     |     |           |    |
| Cover Type                   | HSG | Area [ac] | CN |
| Impervious - Gravel          | B   | 0.055     | 85 |
| MLV-33 TOTALS                |     | 0.055     | 85 |

**Legend**

- Streams
- Stationing
- Alignment Centerline
- Permanent Easement
- Limit of Disturbance
- MLV Pad
- New Access Road
- Access Road Drainage Area
- 100-year Floodplain
- Pond
- Wetland
- Hydrologic Soil Groups
- 100 ft Buffer off of Limits of Disturbance
- Agricultural
- Barren
- Brush
- Meadow
- Agricultural
- Forest
- Existing Impervious
- Meadow
- State Road Centerline
- 10-foot Contour
- 2-foot Contour

NAD 1983 UTM 17N (feet)

1 in = 50 feet

50 25 0 50 Feet

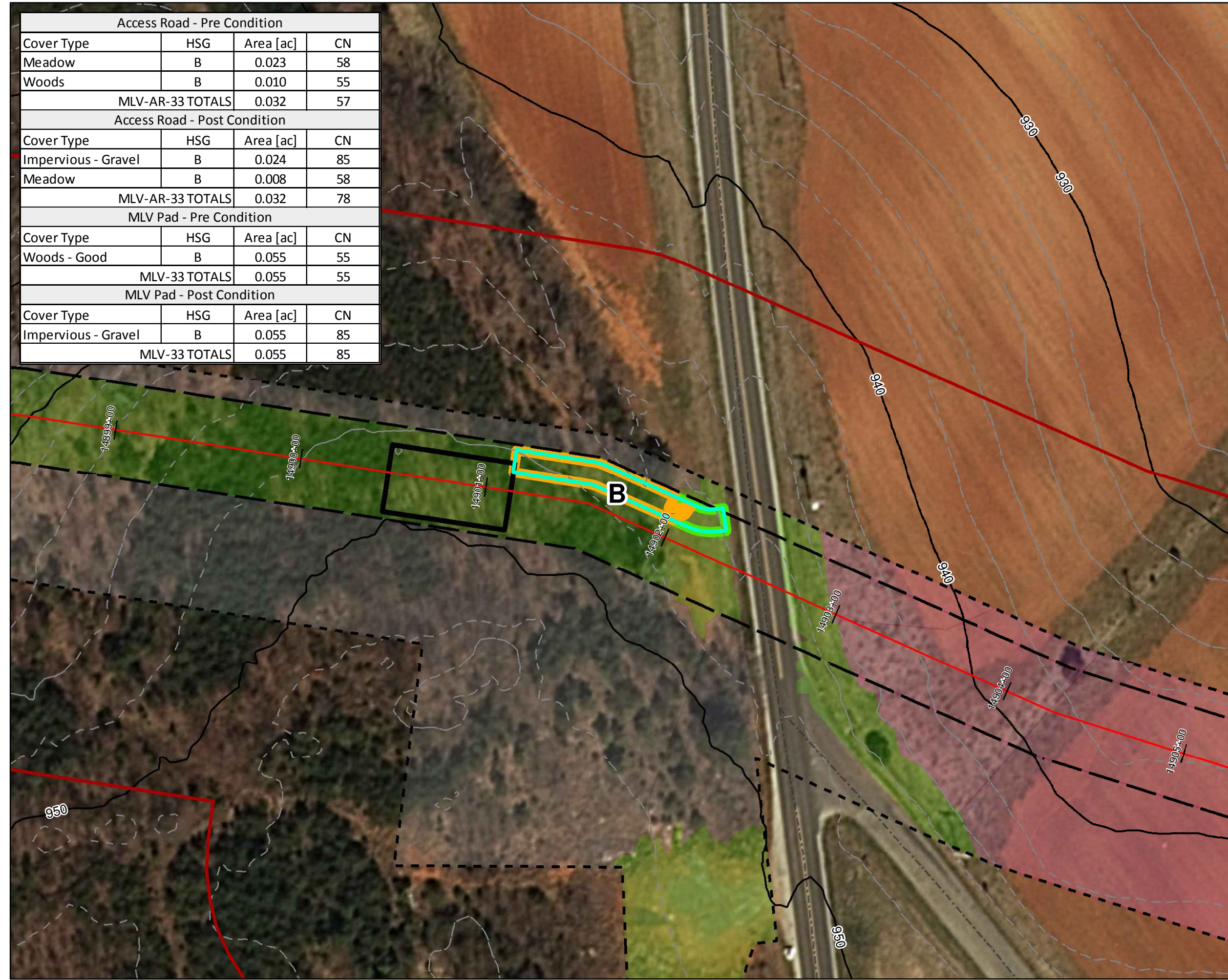


**Mountain Valley Pipeline Project**

**New Impervious Cover  
Stormwater Drainage Exhibits  
MLV-33  
Spread 11**

Figure 011  
Franklin County, Virginia  
March, 2018

Data Sources: Imagery from ESRI Streaming Data 2014, Delineated streams surveyed by Tetra Tech Inc. 2014 to 2017, Transportation data from VITA map layer 2016, Elevation data derived from LiDAR provided by EQT 2016, Soils from NRCS Gridded Soil Survey Geographic (SSURGO) database 2014, Land Use digitized from ESRI World Imagery 2015, Agricultural Area from National Land Cover Dataset 2011.

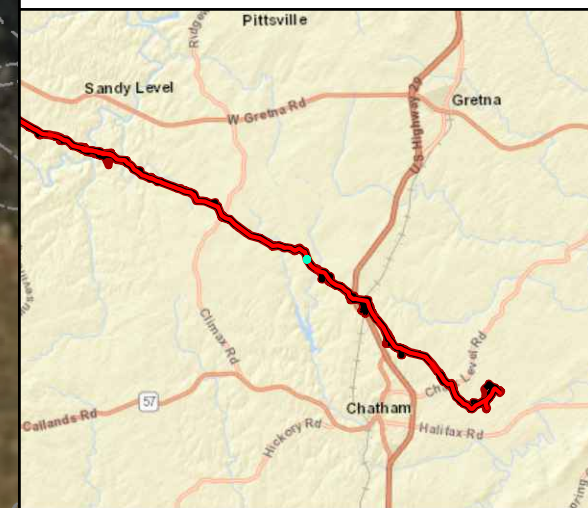
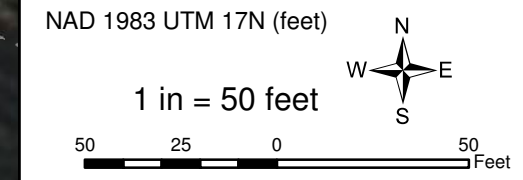


Document Path: P:\GIS\EQT\_MVP\Mapdocs\Drainage\MXD\MVP\_Stormwater\Drainage\_Exhibits\AccessRoad.mxd



| Access Road - Pre Condition  |     |           |    |
|------------------------------|-----|-----------|----|
| Cover Type                   | HSG | Area [ac] | CN |
| Meadow                       | B   | 0.009     | 58 |
| Woods                        | B   | 0.012     | 55 |
| MLV-AR-34 TOTALS             |     | 0.021     | 56 |
| Access Road - Post Condition |     |           |    |
| Cover Type                   | HSG | Area [ac] | CN |
| Impervious - Gravel          | B   | 0.016     | 85 |
| Meadow                       | B   | 0.005     | 58 |
| MLV-AR-34 TOTALS             |     | 0.021     | 79 |
| MLV Pad - Pre Condition      |     |           |    |
| Cover Type                   | HSG | Area [ac] | CN |
| Meadow                       | B   | 0.055     | 58 |
| MLV-34 TOTALS                |     | 0.055     | 58 |
| MLV Pad - Post Condition     |     |           |    |
| Cover Type                   | HSG | Area [ac] | CN |
| Impervious - Gravel          | B   | 0.055     | 85 |
| MLV-34 TOTALS                |     | 0.055     | 85 |

- Legend**
- Streams
  - Stationing
  - Alignment Centerline
  - Permanent Easement
  - Limit of Disturbance
  - MLV Pad
  - New Access Road
  - Access Road Drainage Area
  - 100-year Floodplain
  - Pond
  - Wetland
  - Hydrologic Soil Groups
  - 100 ft Buffer off of Limits of Disturbance
  - Agricultural
  - Barren
  - Brush
  - Meadow
  - Agricultural
  - Forest
  - Existing Impervious
  - Meadow
  - State Road Centerline
  - 10-foot Contour
  - 2-foot Contour



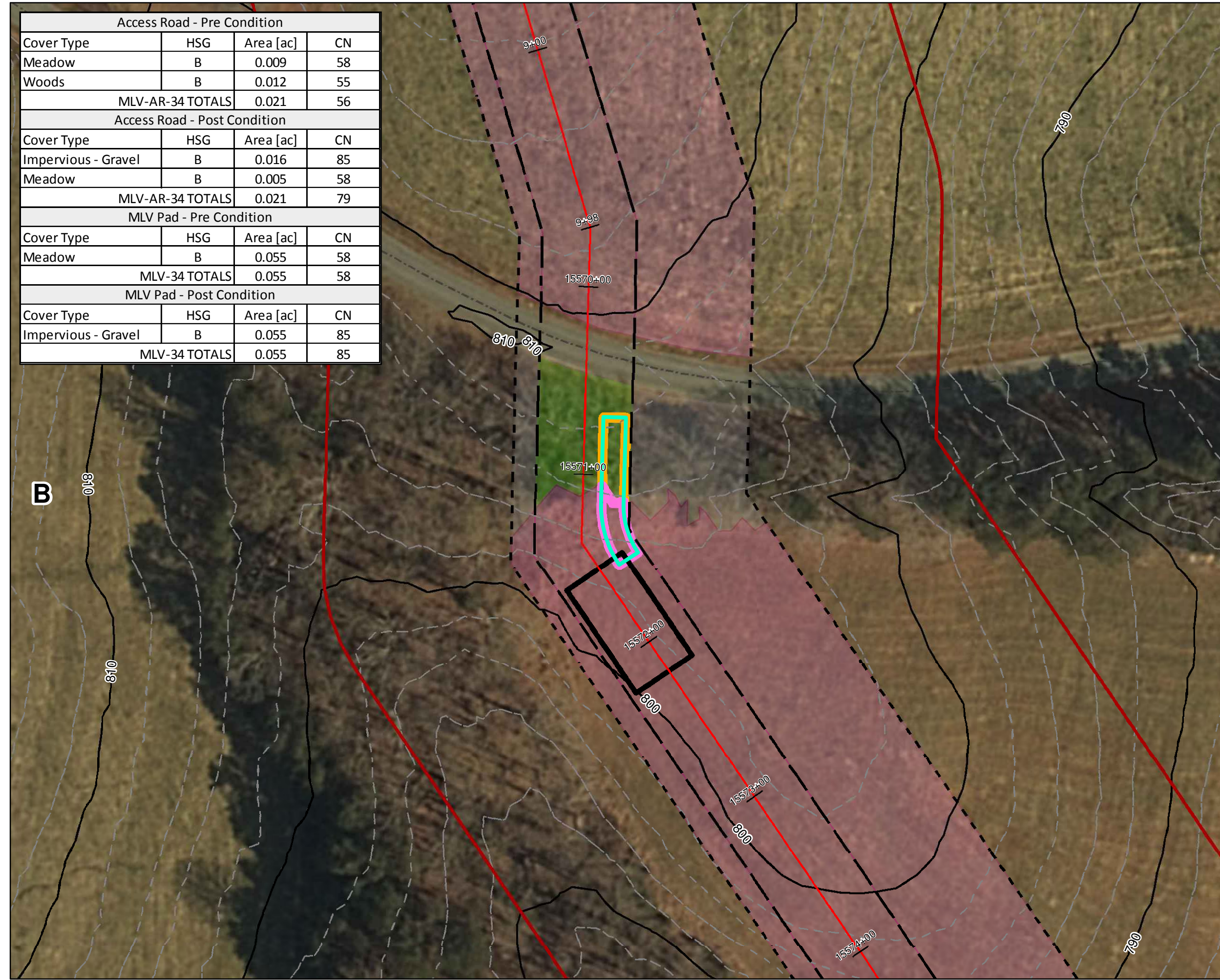
**Mountain Valley Pipeline Project**



**New Impervious Cover  
Stormwater Drainage Exhibits  
MLV-34  
Spread 11**

Figure 012  
Pittsylvania County, Virginia  
March, 2018

Data Sources: Imagery from ESRI Streaming Data 2014, Delineated streams surveyed by Tetra Tech Inc. 2014 to 2017, Transportation data from VITA map layer 2016, Elevation data derived from LIDAR provided by EQT 2016, Soils from NRCS Gridded Soil Survey Geographic (SSURGO) database 2014, Land Use digitized from ESRI World Imagery 2015, Agricultural Area from National Land Cover Dataset 2011.

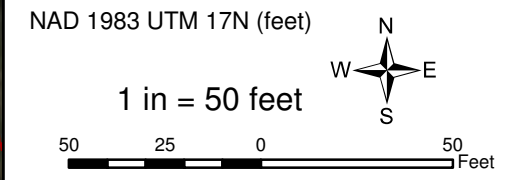


Document Path: P:\GIS\EQT\_MVP\Mapdocs\Drainage\MVP\_Stormwater\Drainage\_Exhibit\AccessRoad.mxd



| Access Road - Pre Condition  |     |           |    |
|------------------------------|-----|-----------|----|
| Cover Type                   | HSG | Area [ac] | CN |
| Woods                        | B   | 0.012     | 55 |
| MLV-AR-35 TOTALS             |     | 0.012     | 55 |
| Access Road - Post Condition |     |           |    |
| Cover Type                   | HSG | Area [ac] | CN |
| Impervious - Gravel          | B   | 0.009     | 85 |
| Meadow                       | B   | 0.003     | 58 |
| MLV-AR-35 TOTALS             |     | 0.012     | 78 |
| MLV Pad - Pre Condition      |     |           |    |
| Cover Type                   | HSG | Area [ac] | CN |
| Woods - Good                 | B   | 0.055     | 55 |
| MLV-35 TOTALS                |     | 0.055     | 55 |
| MLV Pad - Post Condition     |     |           |    |
| Cover Type                   | HSG | Area [ac] | CN |
| Impervious - Gravel          | B   | 0.055     | 85 |
| MLV-35 TOTALS                |     | 0.055     | 85 |

- Legend**
- Streams
  - Stationing
  - Alignment Centerline
  - Permanent Easement
  - Limit of Disturbance
  - MLV Pad
  - New Access Road
  - Access Road Drainage Area
  - 100-year Floodplain
  - Pond
  - Wetland
  - Hydrologic Soil Groups
  - 100 ft Buffer off of Limits of Disturbance
  - Agricultural
  - Barren
  - Brush
  - Meadow
  - Agricultural
  - Forest
  - Existing Impervious
  - Meadow
  - State Road Centerline
  - 10-foot Contour
  - 2-foot Contour



**Mountain Valley Pipeline Project**



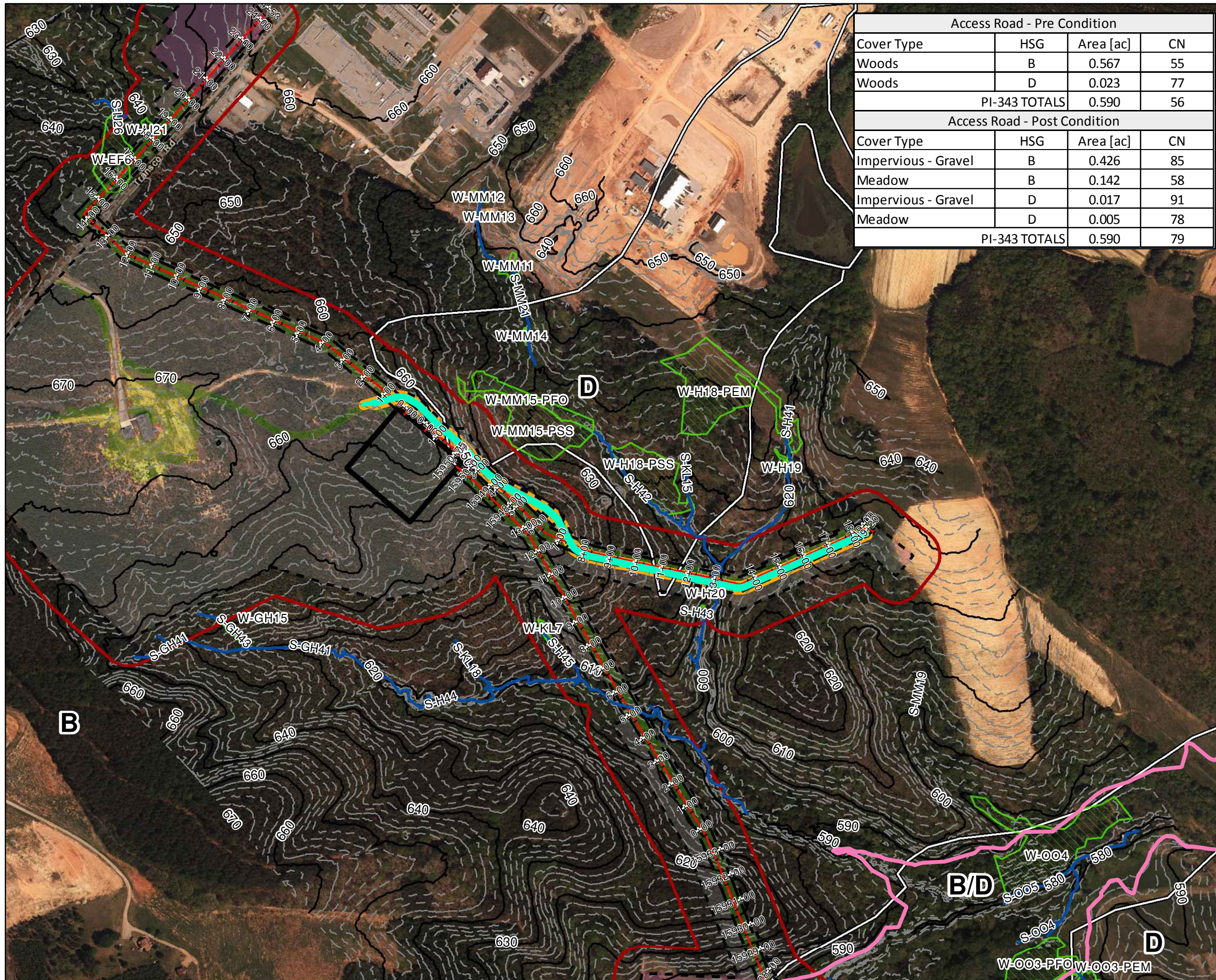
**New Impervious Cover  
Stormwater Drainage Exhibits  
MLV-35  
Spread 11**

Figure 013  
Pittsylvania County, Virginia  
March, 2018

Data Sources: Imagery from ESRI Streaming Data 2014, Delineated streams surveyed by Tetra Tech Inc. 2014 to 2017, Transportation data from VITA map layer 2016, Elevation data derived from LiDAR provided by EQT 2016, Soils from NRCS Gridded Soil Survey Geographic (SSURGO) database 2014, Land Use digitized from ESRI World Imagery 2015, Agricultural Area from National Land Cover Dataset 2011.

Document Path: P:\GIS\EQT\_MVP\MapDocs\Drainage\MXD\MVP\_Stormwater\Drainage\_Exhibits\AccessRoad.mxd





| Access Road - Pre Condition  |     |           |    |
|------------------------------|-----|-----------|----|
| Cover Type                   | HSG | Area [ac] | CN |
| Woods                        | B   | 0.567     | 55 |
| Woods                        | D   | 0.023     | 77 |
| PI-343 TOTALS                |     | 0.590     | 56 |
| Access Road - Post Condition |     |           |    |
| Cover Type                   | HSG | Area [ac] | CN |
| Impervious - Gravel          | B   | 0.426     | 85 |
| Meadow                       | B   | 0.142     | 58 |
| Impervious - Gravel          | D   | 0.017     | 91 |
| Meadow                       | D   | 0.005     | 78 |
| PI-343 TOTALS                |     | 0.590     | 79 |

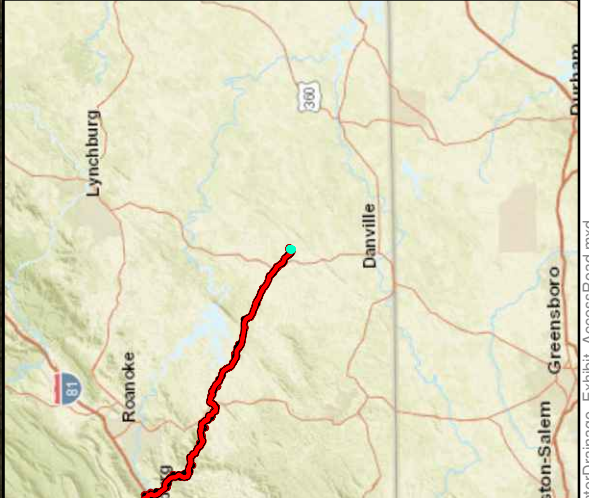
**Legend**

- Streams
- Stationing
- Alignment Centerline
- Permanent Easement
- Limit of Disturbance
- MLV Pad
- New Access Road
- Access Road Drainage Area
- 100-year Floodplain
- Pond
- Wetland
- Hydrologic Soil Groups
- 100 ft Buffer off of Limits of Disturbance
- Agricultural
- Barren
- Brush
- Meadow
- Agricultural
- Forest
- Existing Impervious
- Meadow
- State Road Centerline
- 10-foot Contour
- 2-foot Contour

NAD 1983 UTM 17N (feet)

1 in = 350 feet

50 50 Feet



**Mountain Valley Pipeline Project**

**New Impervious Cover Stormwater Drainage Exhibits PI-343 Spread 11**

Figure 014  
Pittsylvania County, Virginia  
March, 2018

Data Sources: Imagery from ESRI Streaming Data 2014, Delineated streams surveyed by Tetra Tech Inc. 2014 to 2017, Transportation data from VITA map layer 2016, Elevation data derived from LIDAR provided by EQT 2016, Soils from NRCS Gridded Soil Survey Geographic (SSURGO) database 2014, Land Use digitized from ESRI World Imagery 2015, Agricultural Area from National Land Cover Dataset 2011.