

Baseline Assessment – Stream Attributes

REVISIT

*ADDITIONAL FIELD VISITS WERE COMPLETED ON 3-24-2022.

LIMITED ACCESS DUE TO EXISTING SPAN AND ADDITIONAL DATA COULD NOT BE COLLECTED.

ALL STREAM DATA COLLECTED FOR ASSESSMENT OF S-A69(1).

PROXY STREAM WILL CONTINUE TO BE UTILIZED.

Reach S-A69(2) (Pipeline ROW)

Intermittent

Spread D

Nicholas County, West Virginia

Data	Included
Photos	✓*
SWVM Form	Proxy Stream Information Utilized; Refer to Master Stream Summary Table; Limited Access
FCI Calculator and HGM Form	
RBP Physical Characteristics Form	
Water Quality Data	
RBP Habitat Form	
RBP Benthic Form	
Benthic Identification Sheet	
Wolman Pebble Count	
Reference Reach Software Pebble Count Data	
Longitudinal Profile and Cross Sections	

Spread D Stream S-A69 (2) (Pipeline ROW) Nicholas County



Photo Type: DS, US View

Location, Orientation, Photographer Initials: Downstream Edge of ROW, Upstream View, JM
Latitude, Longitude: 38.317089, -80.671565

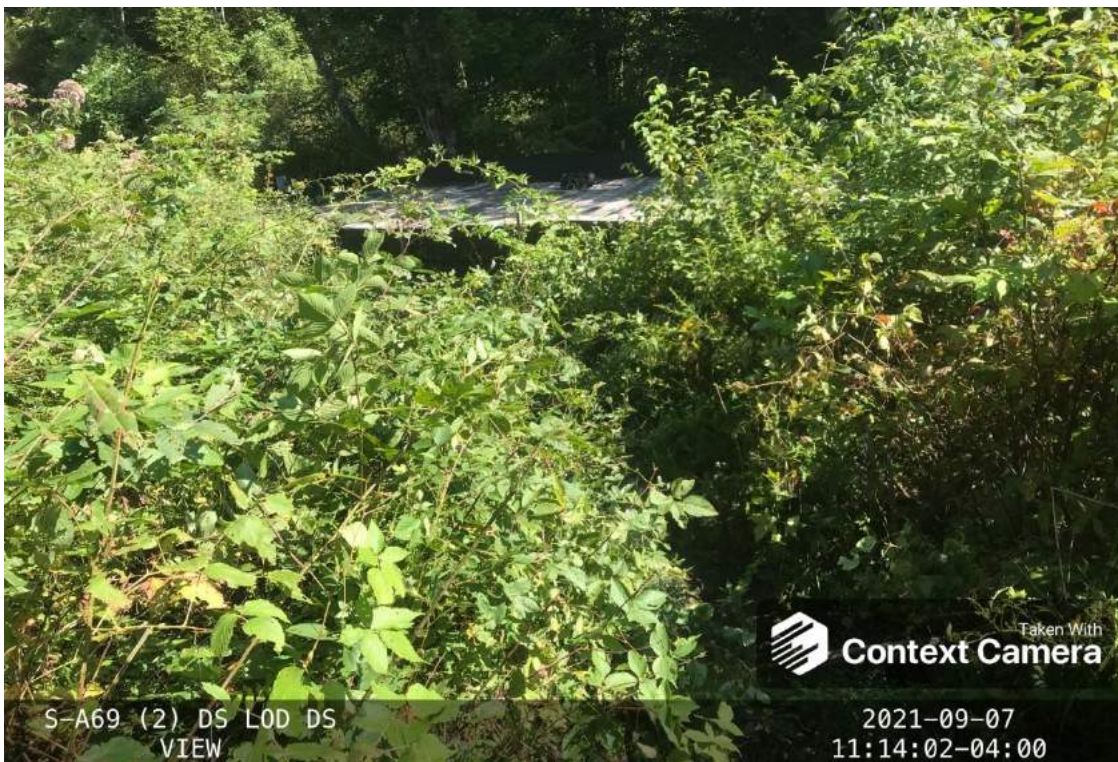


Photo Type: DS, DS View

Location, Orientation, Photographer Initials: Downstream Edge of ROW, Downstream View, JM
Latitude, Longitude: 38.317089, -80.671565

Spread D Stream S-A69 (2) (Pipeline ROW) Nicholas County



Photo Type: US View at Center
Location, Orientation, Photographer Initials: Center ROW, Upstream View, JM
Latitude, Longitude: 38.317089, -80.671565



Photo Type: DS View at Center
Location, Orientation, Photographer Initials: ROW Center, Downstream View, JM
Latitude, Longitude: 38.317089, -80.671565

Spread D Stream S-A69 (2) (Pipeline ROW) Nicholas County



Photo Type: US, US View

Location, Orientation, Photographer Initials: Upstream Edge of ROW, Upstream View, JM
Latitude, Longitude: 38.317089, -80.671565



Photo Type: US, DS View

Location, Orientation, Photographer Initials: Upstream Edge of ROW, Downstream View, JM
Latitude, Longitude: 38.317089, -80.671565

38.317089° N, -80.671565° W



Photo Type: US Edge of ROW, US View

Location, Orientation, Photographer Initials: Upstream Edge of Right of Way, Upstream View, BB/ABK
(3/24/2022)

38.317089° N, -80.671565° W



Photo Type: US Edge, DS View

Location, Orientation, Photographer Initials: Upstream Edge of Right of Way, Downstream View, BB/ABK
(3/24/2022)



Photo Type: DS Edge, US View

Location, Orientation, Photographer Initials: Downstream Edge of Right of Way, Upstream View, BB/ABK
(3/24/2022)



Photo Type: DS Edge, DS View

Location, Orientation, Photographer Initials: Downstream Edge of Right of Way, Downstream View, BB/ABK
(3/24/2022)

38.317089° N, -80.671565° W



Photo Type: Center ROW, S

Location, Orientation, Photographer Initials: Center of Right of Way, South View, BB/ABK (3/24/2022)

38.317089° N, -80.671565° W



Photo Type: Center ROW, S

Location, Orientation, Photographer Initials: Center of Right of Way, South View, BB/ABK (3/24/2022)

"Q:\Charleston\2021 Projects\21-0244- MVP- STREAM AND WETLAND CONDITIONS ASSESSMENT AND SURVEY PLAN\002 - Pre-Crossing Monitoring\Spread D\S-A69(2)\Photos - Spread D - S-A69(2) - 3-24-2022 NEEDS COORDS (21-0244-002).docx"