

Baseline Assessment – Stream Attributes

REVISIT

*ADDITIONAL FIELD VISITS WERE COMPLETED ON 3-28-2022. ACCESS LIMITED DUE TO EXISTING SPAN;
ADDITIONAL DATA COULD NOT BE COLLECTED. PROXY STREAM WILL CONTINUE TO BE UTILIZED.

Reach S-B6a TEMP AR (Temporary Access Road) Perennial Spread A Harrison County, West Virginia

Data	Included
Photos	✓*
SWVM Form	Proxy Stream Information Utilized; Refer to Master Stream Summary Table; Limited Access
FCI Calculator and HGM Form	
RBP Physical Characteristics Form	
Water Quality Data	
RBP Habitat Form	
RBP Benthic Form	
Benthic Identification Sheet	
Wolman Pebble Count	
Reference Reach Software Pebble Count Data	
Longitudinal Profile and Cross Sections	

Spread A Stream S-B6a TEMP AR (Temporary Access Road) Harrison County



Photo Type: DS, US View

Location, Orientation, Photographer Initials: Downstream Edge of ROW, Upstream View, AJE/DSH/MAG
Lat: 39.317309 Long: -80.527175

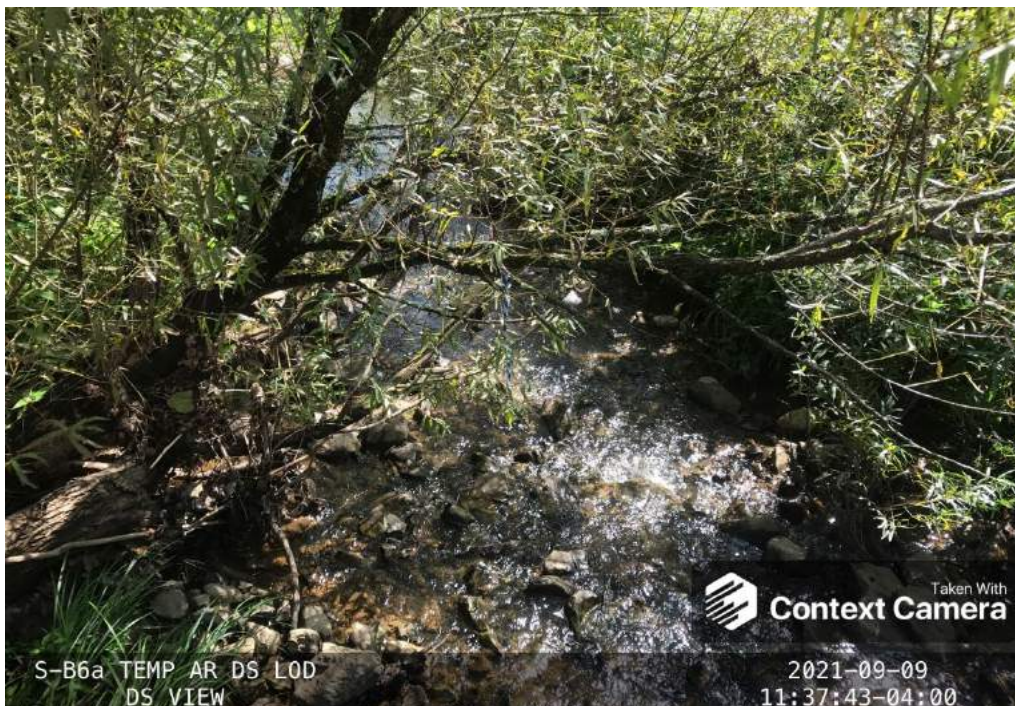


Photo Type: DS, DS View

Location, Orientation, Photographer Initials: Downstream Edge of ROW, Downstream View, AJE/DSH/MAG
Lat: 39.317309 Long: -80.527175

Spread A Stream S-B6a TEMP AR (Temporary Access Road) Harrison County

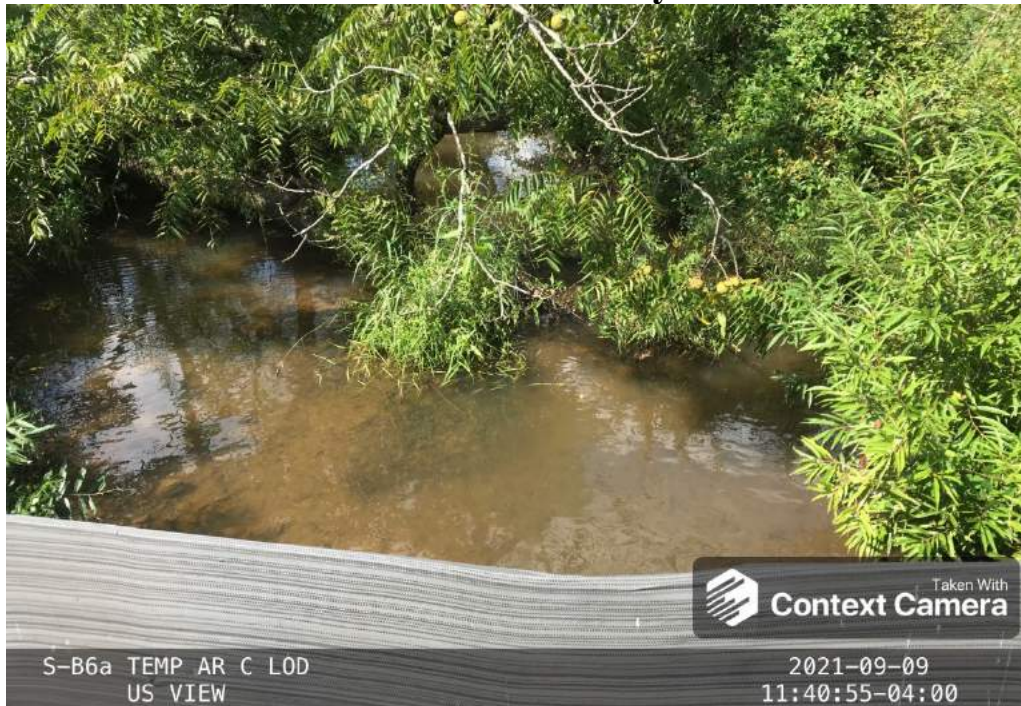


Photo Type: US View at Center
Location, Orientation, Photographer Initials: Center ROW, Upstream View, AJE/DSH/MAG
Lat: 39.317309 Long: -80.527175

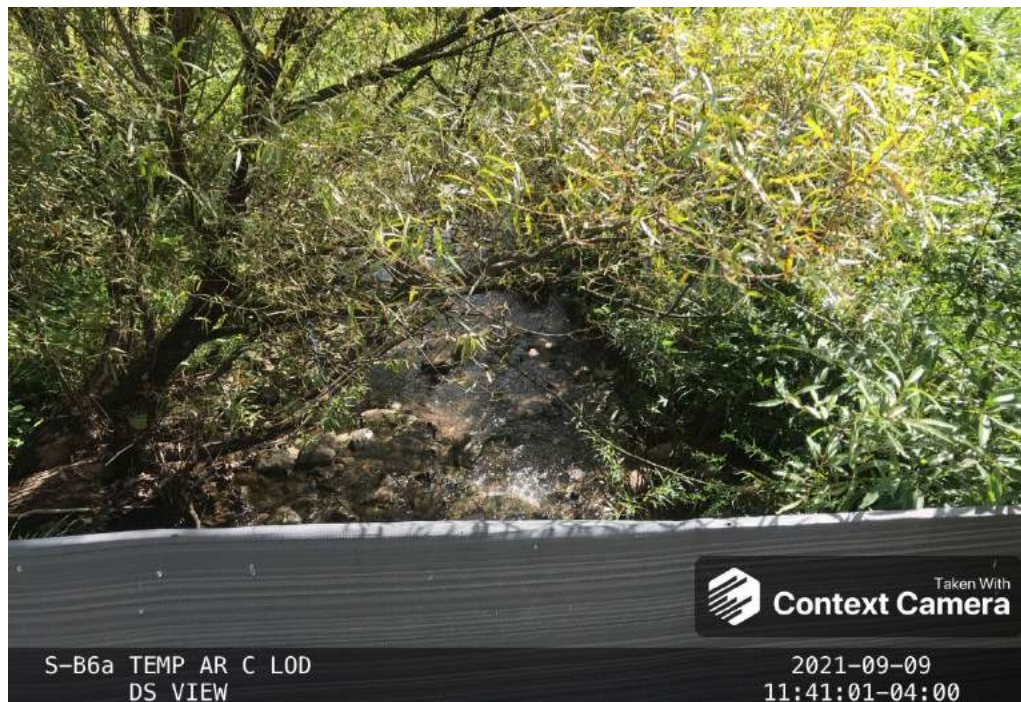


Photo Type: DS View at Center
Location, Orientation, Photographer Initials: ROW Center, Downstream View, AJE/DSH/MAG
Lat: 39.317309 Long: -80.527175

Spread A Stream S-B6a TEMP AR (Temporary Access Road) Harrison County

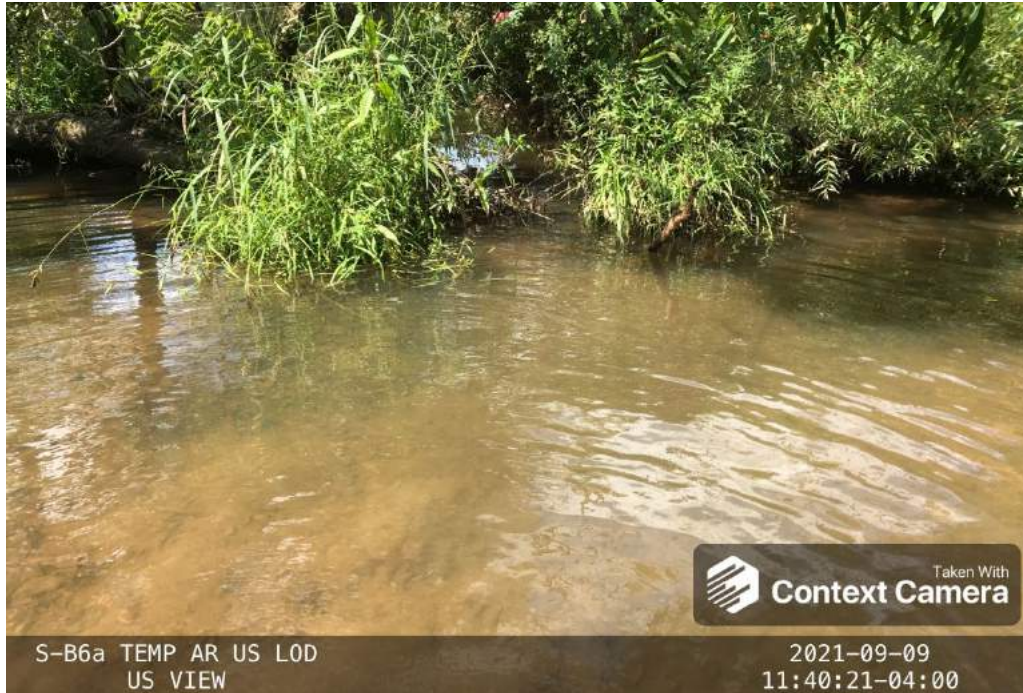


Photo Type: US, US View

Location, Orientation, Photographer Initials: Upstream Edge of ROW, Upstream View, AJE/DSH/MAG
Lat: 39.317309 Long: -80.527175



Photo Type: US, DS View

Location, Orientation, Photographer Initials: Upstream Edge of ROW, Downstream View, AJE/DSH/MAG
Lat: 39.317309 Long: -80.527175

Spread A Stream S-B6a TEMP AR (Temporary Access Road) Harrison County

39.317309° N, -80.527175°



Photo Type: View of Stream @ DS Edge of TM

Location, Orientation, Photographer Initials: View of Stream @ Downstream Edge of Timber Mat, ABK/TB (3/28/2022)

39.317309° N, -80.527175°



Photo Type: View of DS Portion of Stream LDB @ LOD

Location, Orientation, Photographer Initials: View of Downstream Portion of Stream Left Descending Bank at Limit of Disturbance, ABK/TB (3/28/2022)

Spread A Stream S-B6a TEMP AR (Temporary Access Road) Harrison County

39.317309° N, -80.527175°



Photo Type: View of DS Portion of Stream RDB @ LOD

Location, Orientation, Photographer Initials: View of Downstream Portion of Stream Right Descending Bank at Limit of Disturbance, ABK/TB (3/28/2022)

39.317309° N, -80.527175°



Photo Type: View of Stream @ US Edge of TM

Location, Orientation, Photographer Initials: View of Stream at Upstream Edge of Timber Mat, ABK/TB (3/28/2022)

Spread A Stream S-B6a TEMP AR (Temporary Access Road) Harrison County

39.317309° N, -80.527175°



Photo Type: View of US Portion of Stream RDB @ LOD

Location, Orientation, Photographer Initials: View of Upstream Portion of Stream Right Descending Bank at Limit of Disturbance, ABK/TB (3/28/2022)

39.317309° N, -80.527175°

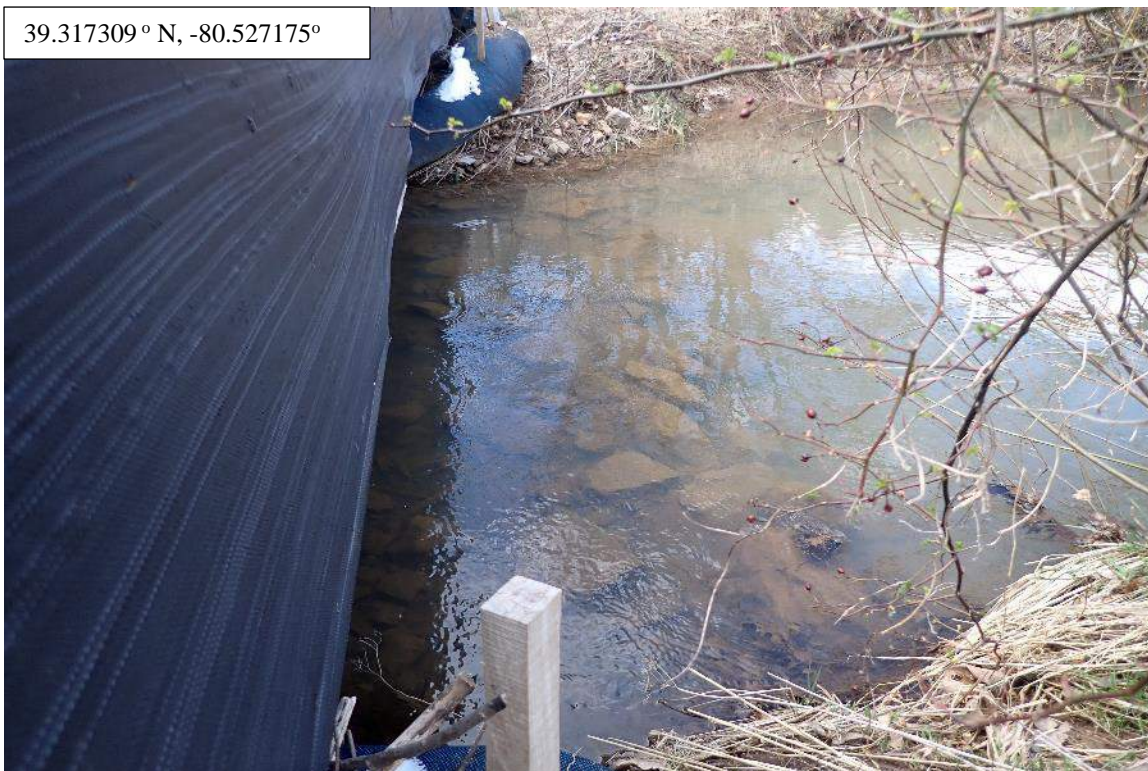


Photo Type: View of US Portion of Stream LDB @ LOD

Location, Orientation, Photographer Initials: View of Upstream Portion of Stream Left Descending Bank at Limit of Disturbance, ABK/TB (3/28/2022)

Spread A Stream S-B6a TEMP AR (Temporary Access Road) Harrison County

39.317309° N, -80.527175°



Photo Type: View of Temporary AR, N

Location, Orientation, Photographer Initials: View of Temporary Access Road, North, ABK/TB (3/28/2022)

39.317309° N, -80.527175°



Photo Type: View of Temporary AR, S

Location, Orientation, Photographer Initials: View of Temporary Access Road, South, ABK/TB (3/28/2022)

"Q:\Charleston\2021 Projects\21-0244- MVP- STREAM AND WETLAND CONDITIONS ASSESSMENT AND SURVEY PLAN\002 - Pre-Crossing Monitoring\Spread A\S-B6a\Photos - Spread S - S-B6a TEMP AR - March 28, 2022 (21-0244-002).docx"