

Baseline Assessment – Stream Attributes

Reach S-N13 (Pipeline ROW) Intermittent Spread D Nicholas County, West Virginia

Data	Included
Photos	✓
SWVM Form	Proxy Stream Information Utilized; Refer to Master Stream Summary Table
FCI Calculator and HGM Form	
RBP Physical Characteristics Form	
Water Quality Data	
RBP Habitat Form	
RBP Benthic Form	
Benthic Identification Sheet	
Wolman Pebble Count	
Reference Reach Software Pebble Count Data	
Longitudinal Profile and Cross Sections	

Spread D Stream S-N13 (Pipeline ROW) Nicholas County



Photo Type: DS, US View
Location, Orientation, Photographer Initials: Downstream Edge of ROW, Upstream View, HC/MG
Lat: 38.226851 Long: -80.715393



Photo Type: DS, DS View
Location, Orientation, Photographer Initials: Downstream Edge of ROW, Downstream View, HC/MG
Lat: 38.226851 Long: -80.715393

Spread D Stream S-N13 (Pipeline ROW) Nicholas County

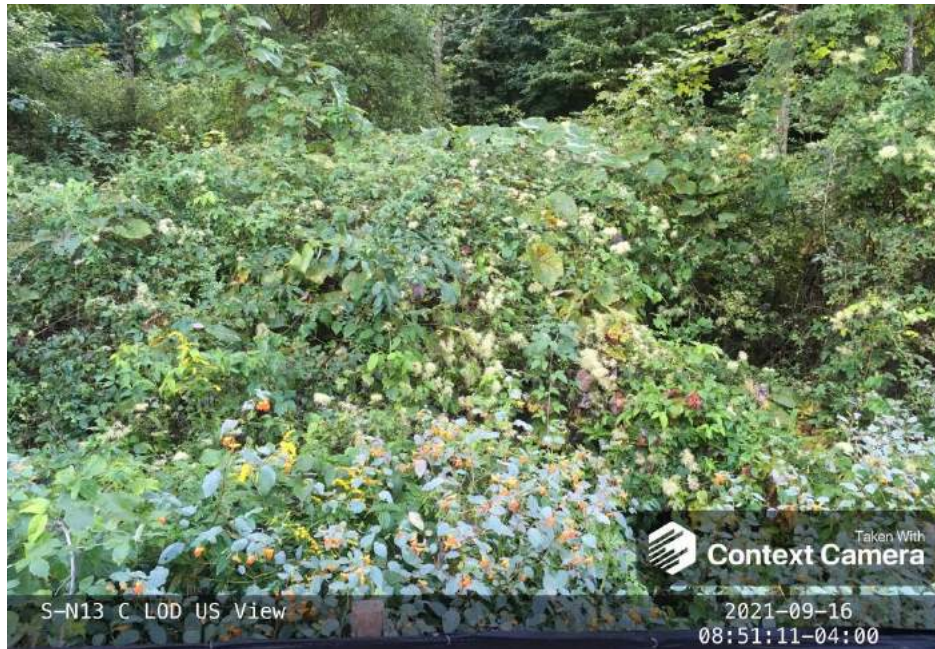


Photo Type: US View at Center
Location, Orientation, Photographer Initials: Center ROW, Upstream View, HC/MG
Lat: 38.226851 Long: -80.715393

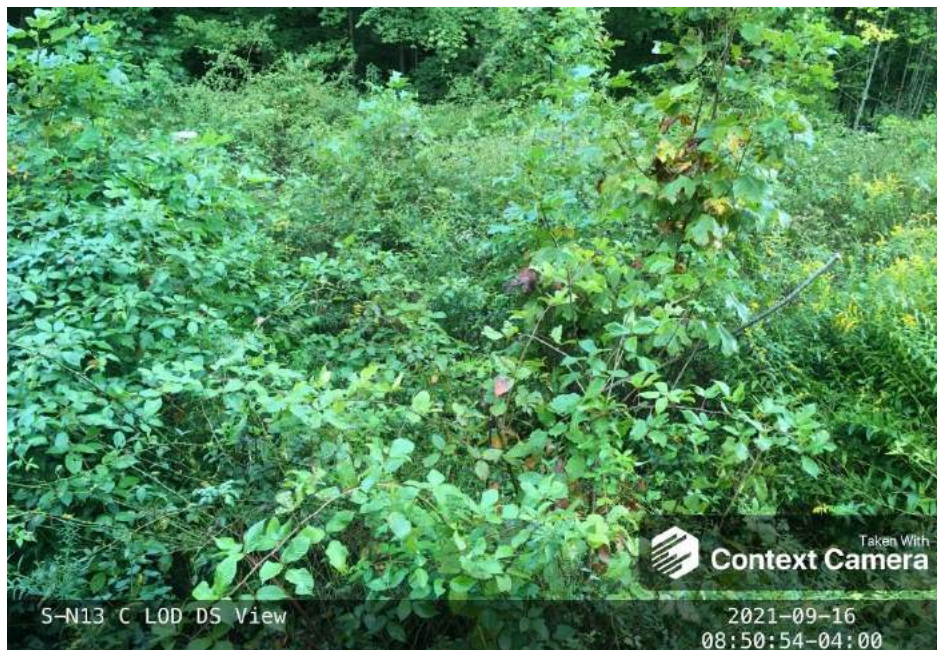


Photo Type: DS View at Center
Location, Orientation, Photographer Initials: ROW Center, Downstream View, HC/MG
Lat: 38.226851 Long: -80.715393

Spread D Stream S-N13 (Pipeline ROW) Nicholas County



Photo Type: US, US View
Location, Orientation, Photographer Initials: Upstream Edge of ROW, Upstream View, HC/MG
Lat: 38.226851 Long: -80.715393



Photo Type: US, DS View
Location, Orientation, Photographer Initials: Upstream Edge of ROW, Downstream View, HC/MG
Lat: 38.226851 Long: -80.715393