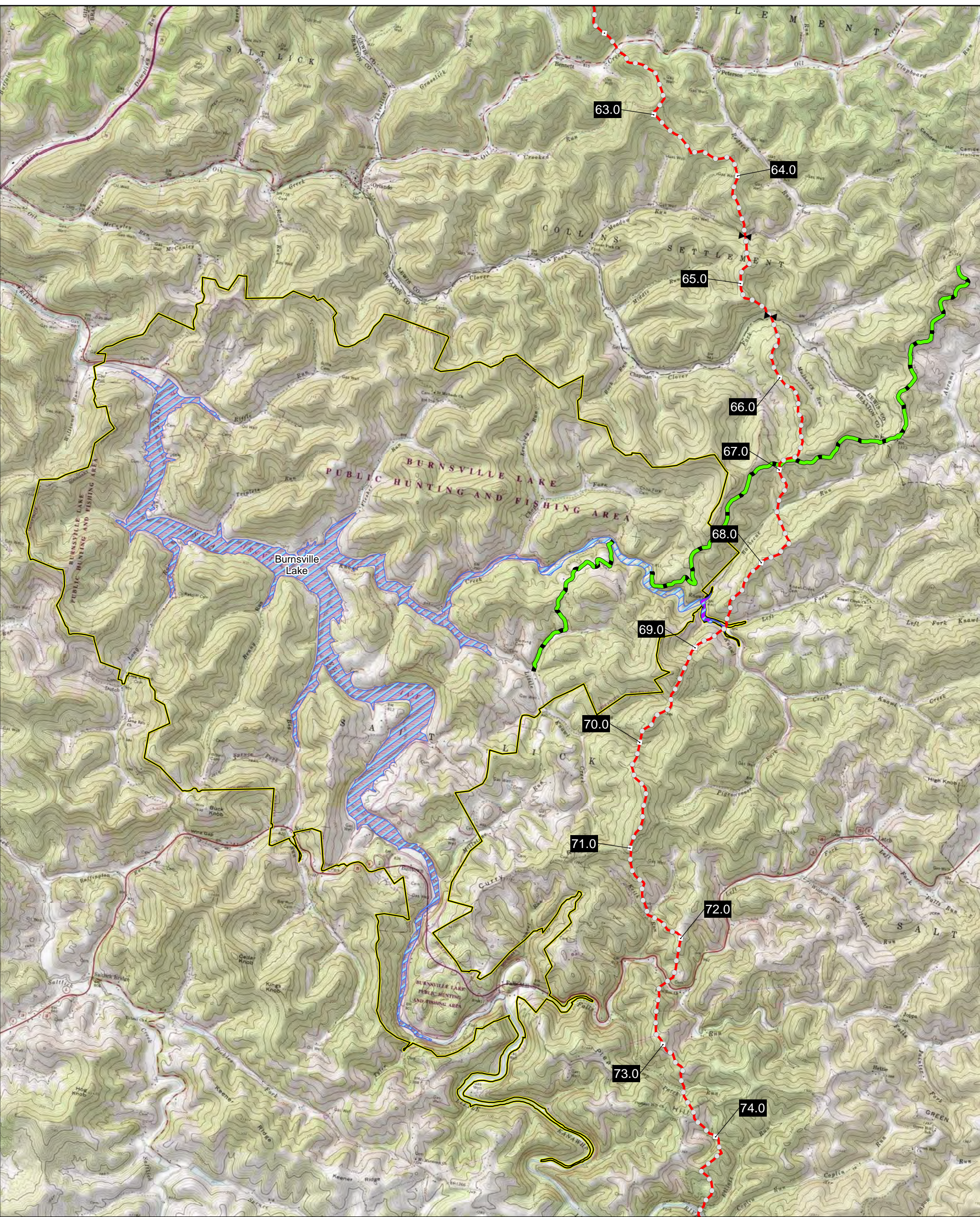


## **APPENDIX A-3**

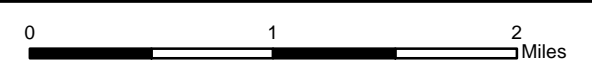
### **Topographic Maps**

---



**Mountain Valley Pipeline Project**

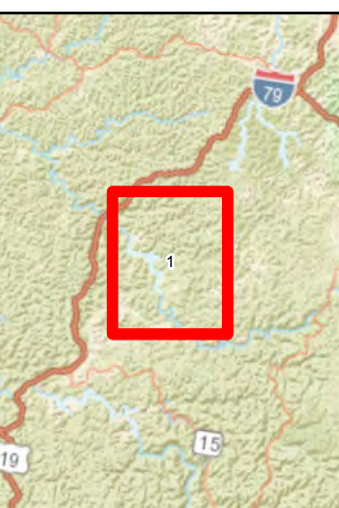
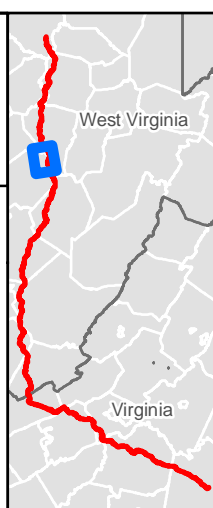
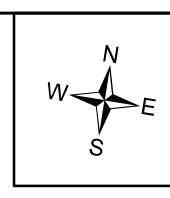
NAD 1983 UTM 17N 1:50,000



**Appendix A-3  
USGS 7.5 Minute  
Topographic Maps**

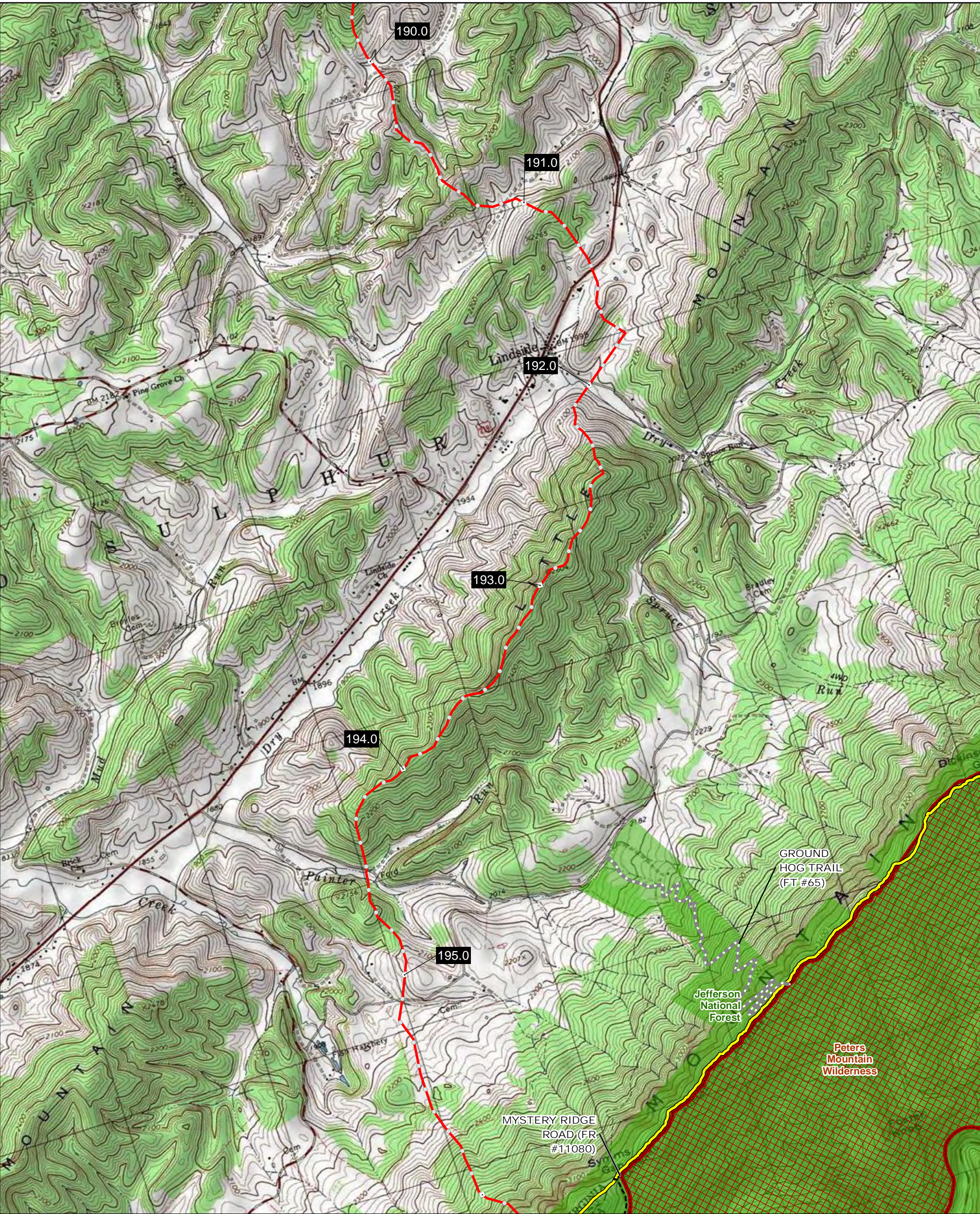
Page 1 of 4

- Legend**
- ▶ Mainline Block Valve
  - Mile
  - Tenth-mile
  - Proposed Route
  - Weston and Gauley Bridge Turnpike Trail
  - ▨ Army Corps of Engineers Reservoir
  - ▭ Burnsville Lake Flowage Easement
  - ▭ Burnsville Lake Wildlife Management Area



Data Sources: ESRI Streaming Data, 2019, ESRI, 2018, Ventyx, 2014.

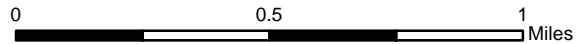
Document Path: P:\EOT-Equitrans\MVP Project\GIS\Spatial\MXD07\_SF\_299\_Submittals\20200424\_SF\_299\_BLM\_Crossing\_Updates\POD\_Version\_AppendixA3\_USGS\_7p5Min\_Topo\_WGBTT\_Pg1.mxd



Mountain Valley Pipeline Project

NAD 1983 UTM 17N

1:24,000

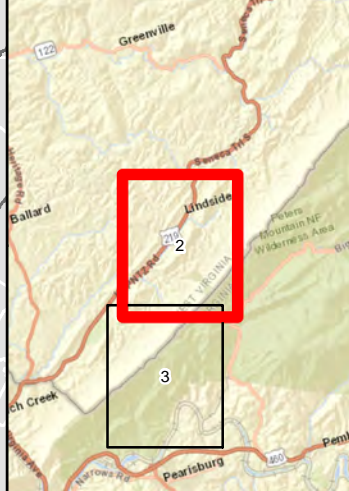
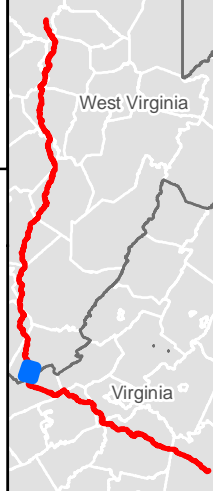


**Appendix A-3  
USGS 7.5 Minute  
Topographic Maps**

Page 2 of 4

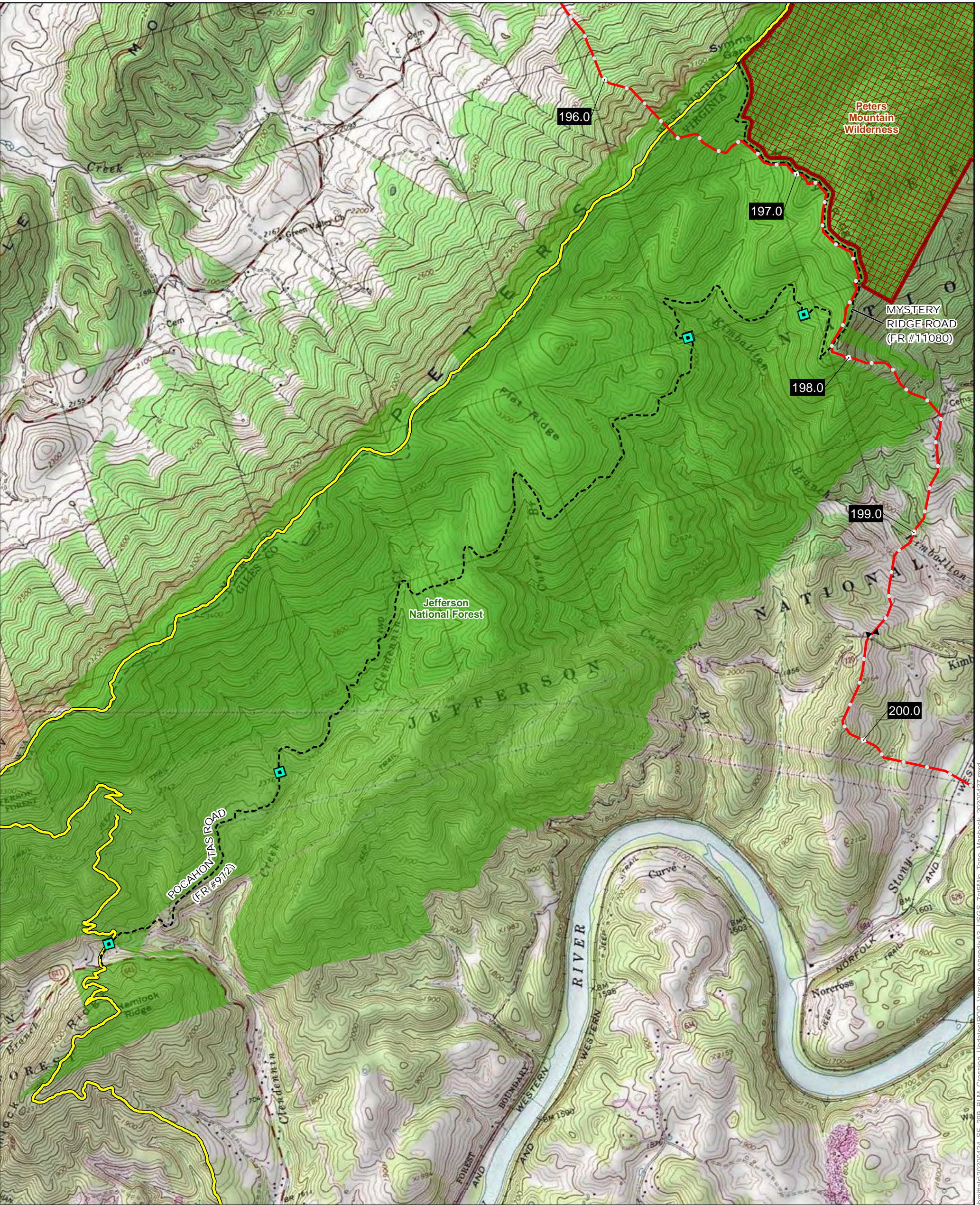
**Legend**

- Milepost
- Tenth-mile
- Proposed Route
- ▬▬▬ Ground Hog Trail (FT #65)
- - - U.S. Forest Service Road
- Appalachian National Scenic Trail (ANST)
- ⊠ USDA Forest Service (National Forest) Lands Wilderness Area
- USDA Forest Service (National Forest) Lands



Data Sources: ESRI Streaming Data, 2019, ESRI, 2018, Ventyx, 2014, USDA Forest Service, Appalachian Trail Conservancy 3/21/17

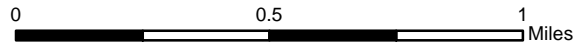
Document Path: P:\EOT-Equitrans\MVP\_Project\GIS\Spatial\MXD\07\_SF\_299\_Submittals\20200424\_SF\_299\_BLM\_Crossing\_Updates\POD\_Version\_AppendixA3\_USGS\_7p5Min\_Topo\_Mapbook\_20200427.mxd



Mountain Valley Pipeline Project

NAD 1983 UTM 17N

1:24,000

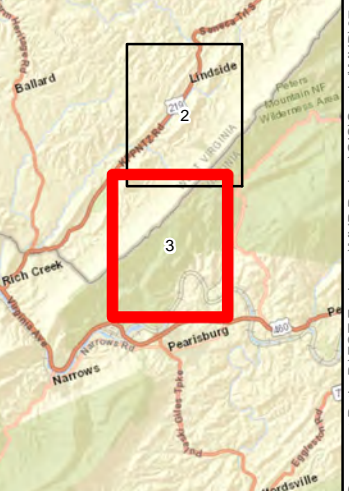
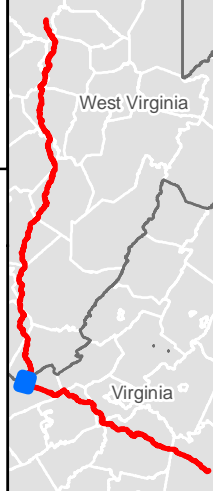
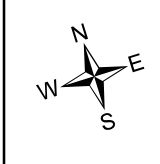


**Appendix A-3  
USGS 7.5 Minute  
Topographic Maps**

Page 3 of 4

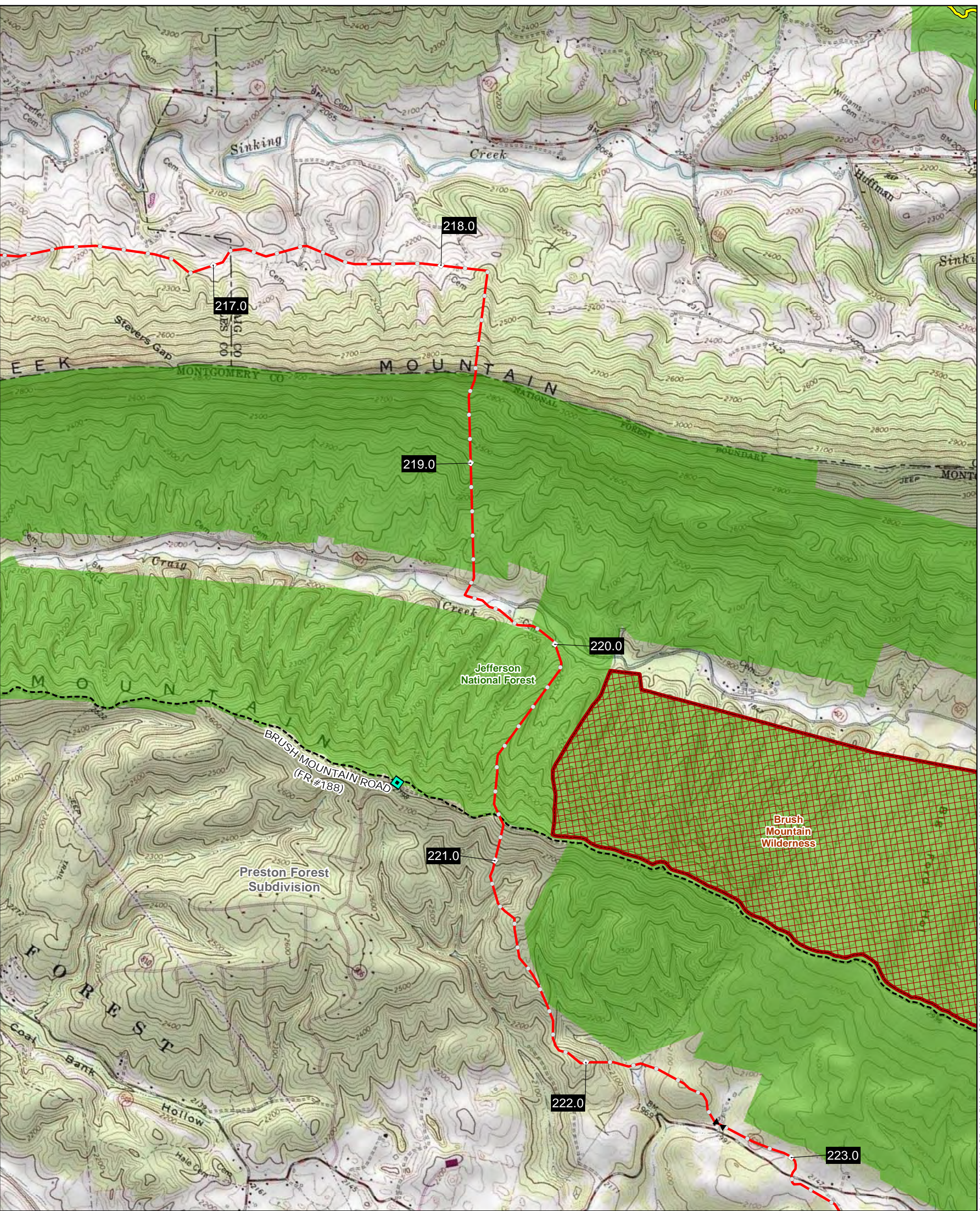
**Legend**

- Mainline Block Valve
- Milepost
- Tenth-mile
- Seasonal Gate
- Proposed Route
- U.S. Forest Service Road
- Appalachian National Scenic Trail (ANST)
- USDA Forest Service (National Forest) Lands Wilderness Area
- USDA Forest Service (National Forest) Lands



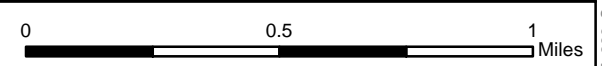
Data Sources: ESRI Streaming Data, 2019, ESRI, 2018, Ventyx, 2014, USDA Forest Service, Appalachian Trail Conservancy 3/21/17

Document Path: P:\EOT-Equitrans\MVP Project\GIS\Spatial\MXD\07\_SF\_299\_Submittals\20200424\_SF\_299\_BLM\_Crossing\_Updates\POD\_Version\_AppendixA3\_USGS\_7p5Min\_Topo\_Mapbook\_20200427.mxd



**Mountain Valley Pipeline Project**

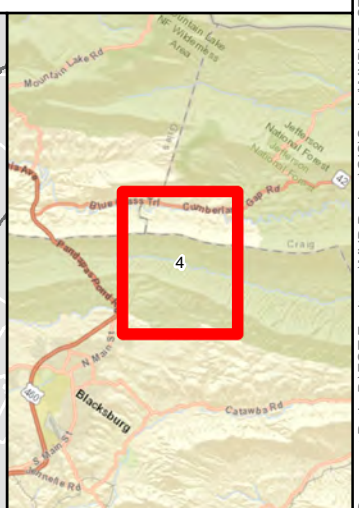
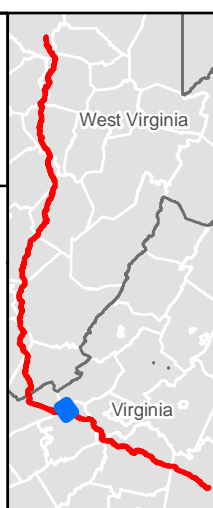
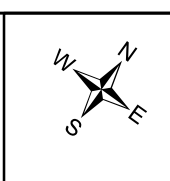
NAD 1983 UTM 17N 1:24,000



**Appendix A-3  
USGS 7.5 Minute  
Topographic Maps**

Page 4 of 4

- Legend**
- ▶ Mainline Block Valve
  - Milepost
  - Tenth-mile
  - Seasonal Gate
  - Proposed Route
  - - - U.S. Forest Service Road
  - Appalachian National Scenic Trail (ANST)
  - ▣ USDA Forest Service (National Forest) Lands Wilderness Area
  - USDA Forest Service (National Forest) Lands



Data Sources: ESRI Streaming Data, 2019, ESRI, 2018, Ventyx, 2014, USDA Forest Service, Appalachian Trail Conservancy 3/21/17

Document Path: P:\EOT-Equitrans\MVP\_Project\GIS\Spatial\MXD\07\_SF\_299\_Submittals\20200424\_SF\_299\_BLM\_Crossing\_Updates\POD\_Version\_AppendixA3\_USGS\_7p5Min\_Topo\_Mapbook\_20200427.mxd