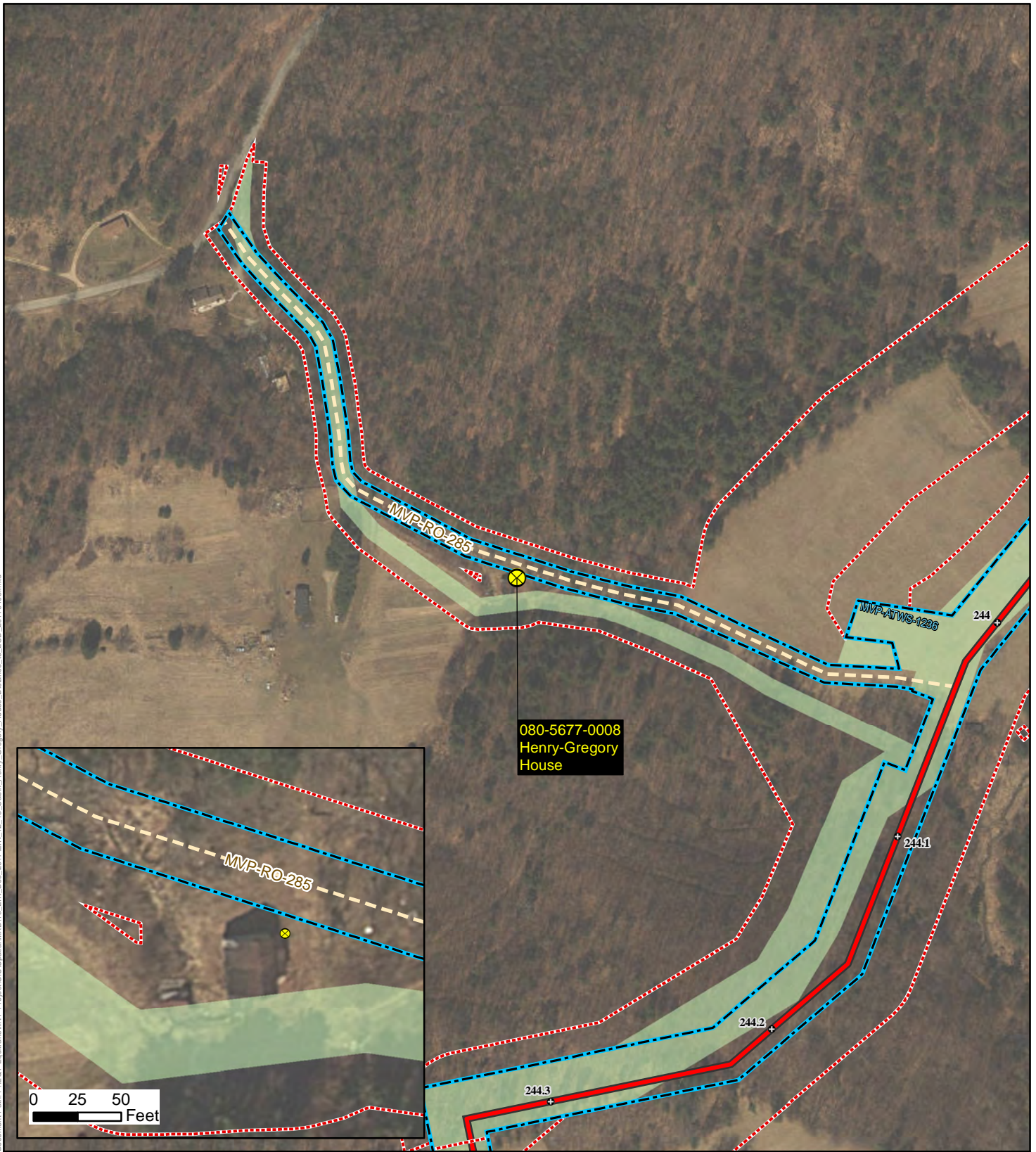


Mountain Valley Pipeline Project

Docket No. CP16-10-000

Attachment PCDR1 Cultural 12

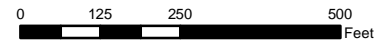
Document Path: P:\EOT-Equitrans\MVP-Project\GIS\Spatial\MXD\13_EIR_Dec_2017\EIR_12_13_Cabin_Henry_Gregory_House_Distance_to_LOD_20170103.mxd



Mountain Valley Pipeline Project



NAD 1983 UTM 17N



**Proposed Pipeline Facilities
in Relation to
Henry-Gregory House
080-5677-0008
Roanoke County, VA**

JANUARY 2017

Data Sources: USGS, ESRI, Open Street Map.

Legend

- Avoided Historic Architectural Site
- Milepost
- Pipeline
- Proposed Access Road
- Limits of Disturbance
- Previously Identified Avoidance Route
- Cultural Resources Survey Complete

