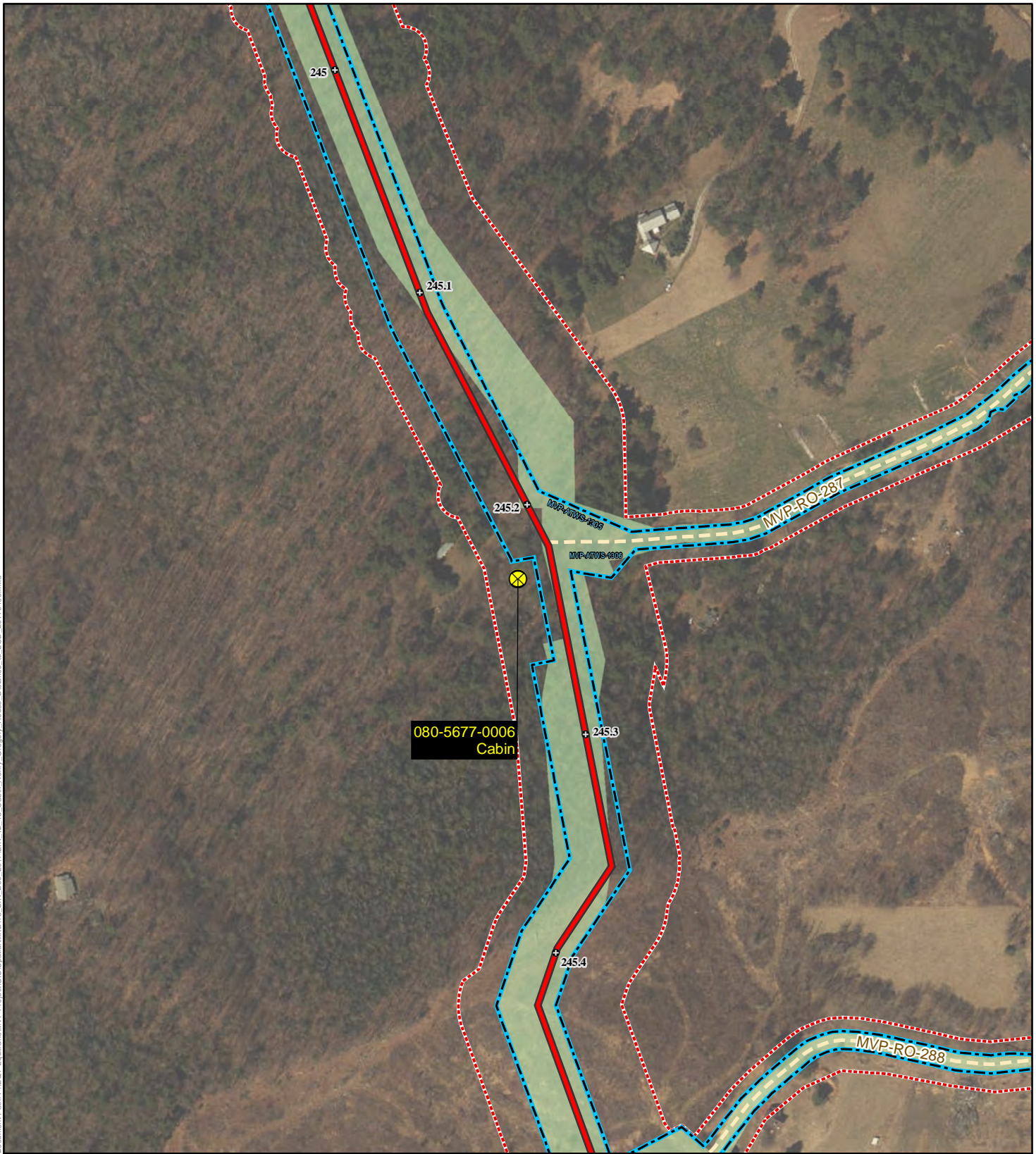


Mountain Valley Pipeline Project

Docket No. CP16-10-000

Attachment PCDR1 Cultural 13

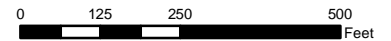
Document Path: P:\EOT-Equitrans\MVP-Project\GIS\Spatial\MXD\13_EIR_Dec_2017\EIR_12_13_Cabin_Henry_Geoproc_House_Distance_to_LOD_20170103.mxd



Mountain Valley Pipeline Project



NAD 1983 UTM 17N






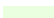



**Proposed Pipeline Facilities
in Relation to
Cabin
080-5677-0006
Roanoke County, VA**

JANUARY 2017

Data Sources: USGS, ESRI, Open Street Map.

Legend

-  Avoided Historic Architectural Site
-  Milepost
-  Pipeline
-  Proposed Access Road
-  Limits of Disturbance
-  Previously Identified Avoidance Route
-  Cultural Resources Survey Complete

