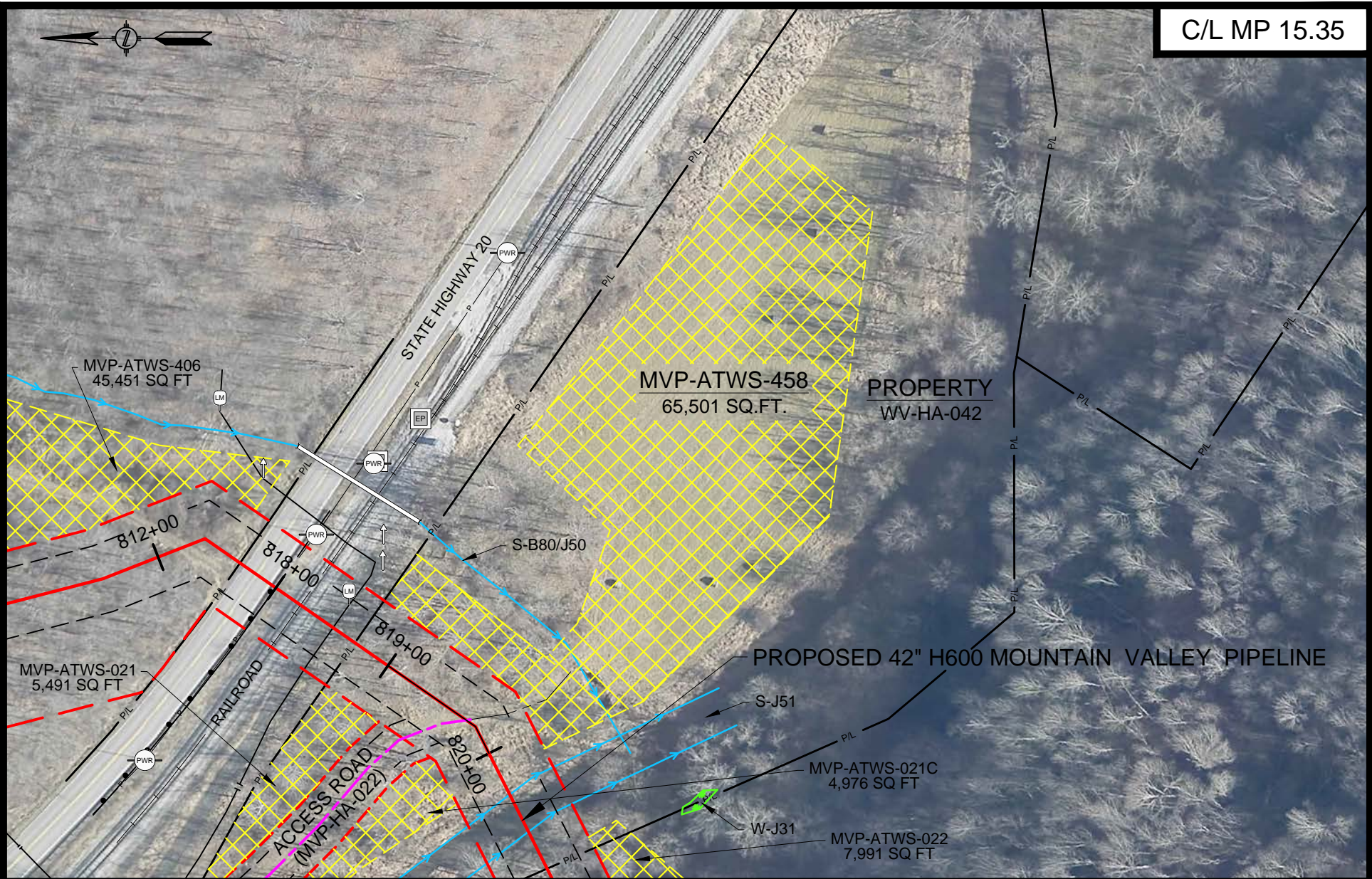


**Mountain Valley Pipeline, LLC
Mountain Valley Pipeline Project
Docket No. CP16-10-000**

**Implementation Plan
December 2017 Supplement**

**Attachment IP-4a
Ancillary Detail Maps 04**



HOLLAND
ENGINEERING

220 Hoover Boulevard, Suite 2 | 26555 Evergreen Rd. Suite. 430
Holland, Michigan 49423-3766 | Southfield, Michigan 48076
T 616-392-5938 F 616-392-2116 | T 248-827-7322 F 248-827-7549

www.hollandengineering.com

HEI PROJECT NO.: 14-10-052

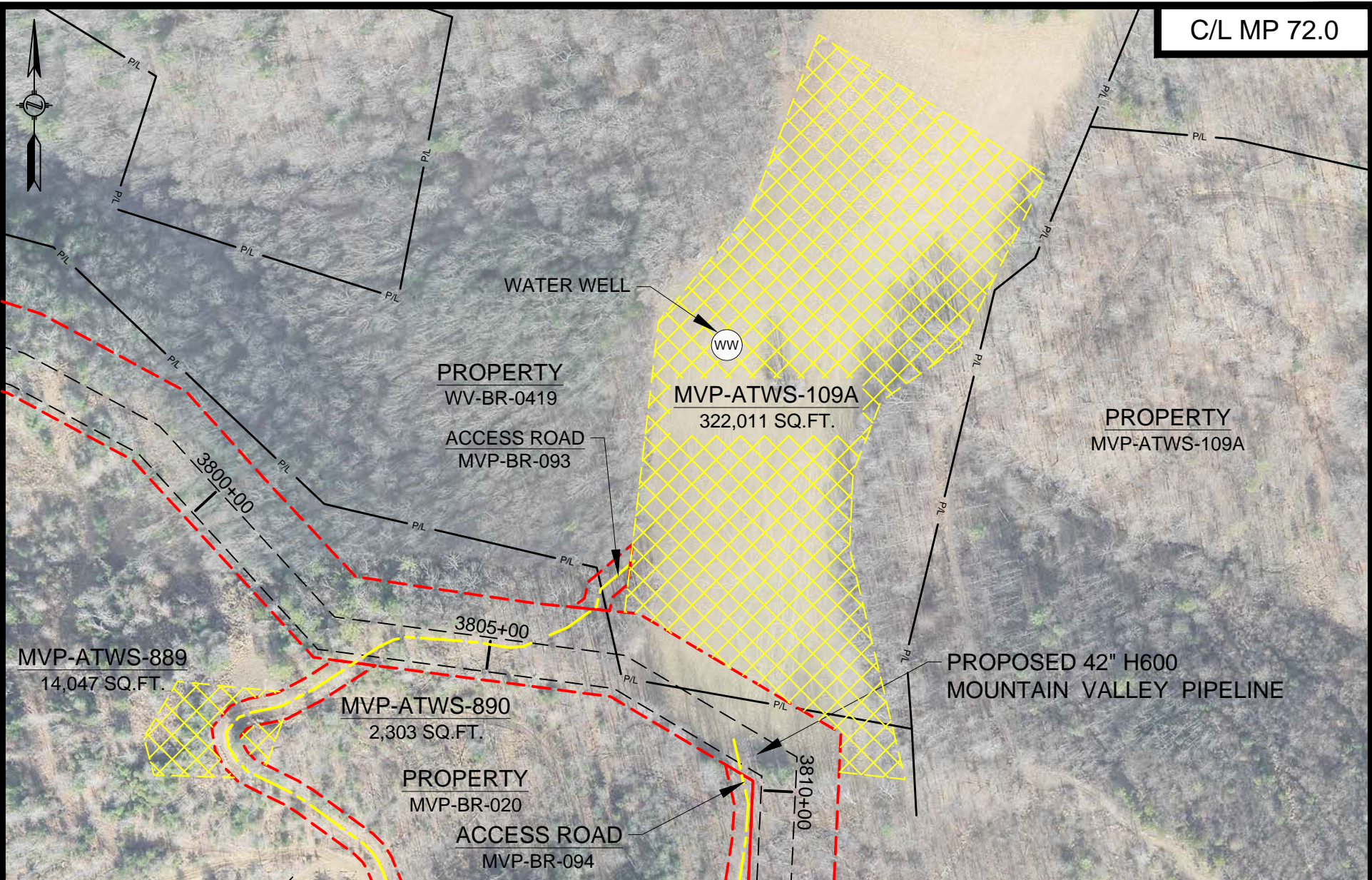


CONSTRUCTION DETAILS - ATWS SITE SPECIFIC

**MOUNTAIN VALLEY PIPELINE PROJECT
PROPOSED H-600 PIPELINE
HARRISON COUNTY, WEST VIRGINIA**

SHEET 1 OF 1

| | |
|----------------------------------|----------|
| DRAWN BY: HEI(DRF) | 10-14-16 |
| DRAFTING CK: | |
| ENVIRONMENTAL CK: | |
| ENGINEERING CK: JJS | 11-27-17 |
| ALIGN. SHEET: PA-HAWV-H600-06 | |
| DRAWING NO.: | |
| CD-ATWS-H600-001 | |
| SCALE: 1" = 100' | REV. 1 |
| DATE OF PLOT: 11/16/2017 8:54 AM | |



HOLLAND ENGINEERING

220 Hoover Boulevard, Suite 2
Holland, Michigan 49423-3766
T 616-392-5938 F 616-392-2116

26555 Evergreen Rd. Suite. 430
Southfield, Michigan 48076
T 248-827-7322 F 248-827-7549

www.hollandengineering.com

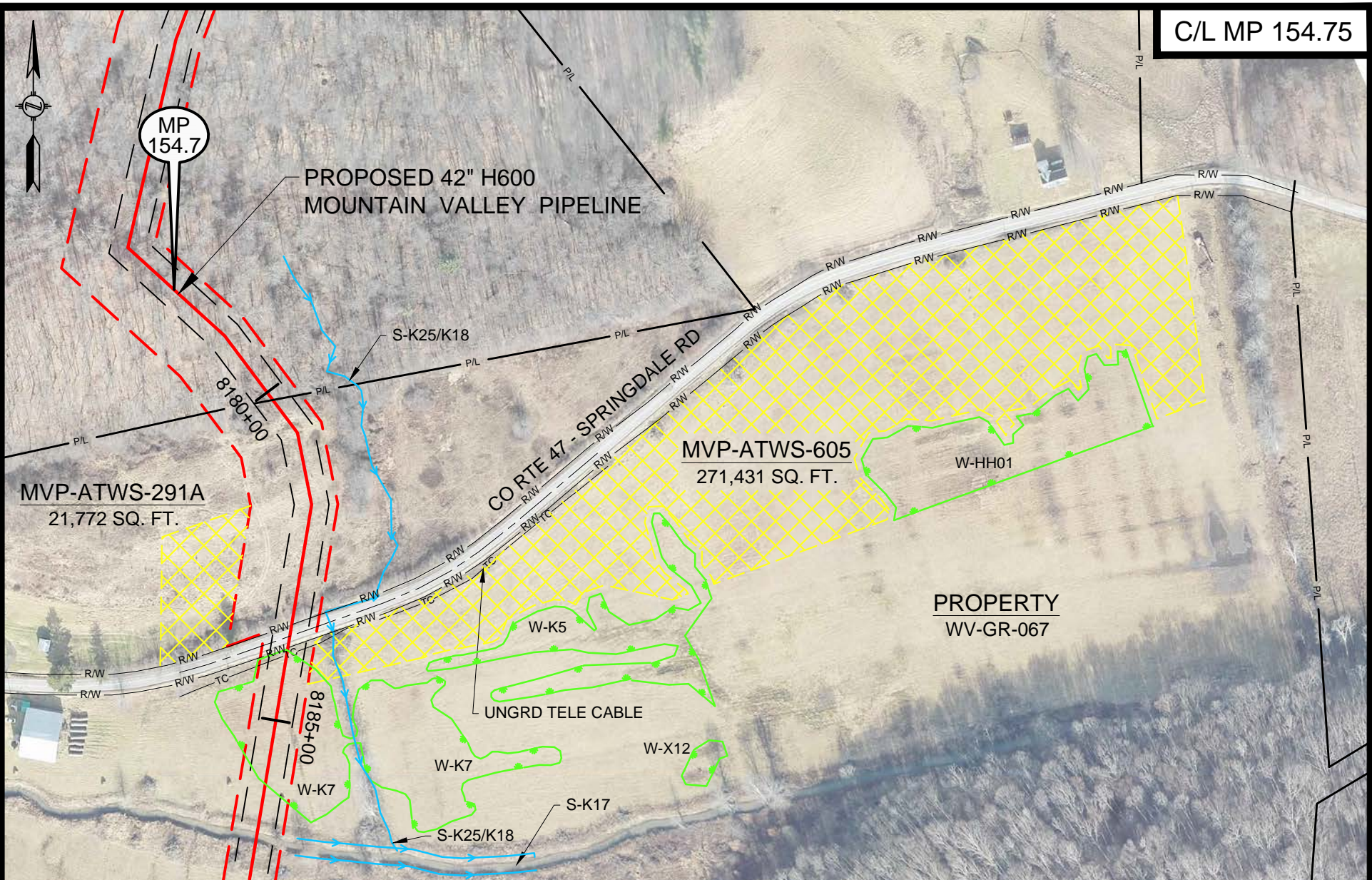


CONSTRUCTION DETAILS - ATWS SITE SPECIFIC

MOUNTAIN VALLEY PIPELINE PROJECT
PROPOSED H-600 PIPELINE
BRAXTON COUNTY, WEST VIRGINIA

| | |
|----------------------------------|----------|
| DRAWN BY: HEI(DRF) | 10-14-16 |
| DRAFTING CK: | |
| ENVIRONMENTAL CK: | |
| ENGINEERING CK: JJS | 11-27-17 |
| ALIGN. SHEET: PA-BRWV-H600-07 | |
| DRAWING NO.: | |
| CD-ATWS-H600-002 | |
| SCALE: 1" = 200' | REV. 1 |
| DATE OF PLOT: 11/16/2017 8:56 AM | |

C/L MP 154.75



220 Hoover Boulevard, Suite 2
Holland, Michigan 49423-3766
T 616-392-5938 F 616-392-2116

26555 Evergreen Rd, Suite. 430
Southfield, Michigan 48076
T 248-827-7322 F 248-827-7549

www.hollandengineering.com

HEI PROJECT NO.: 14-10-052

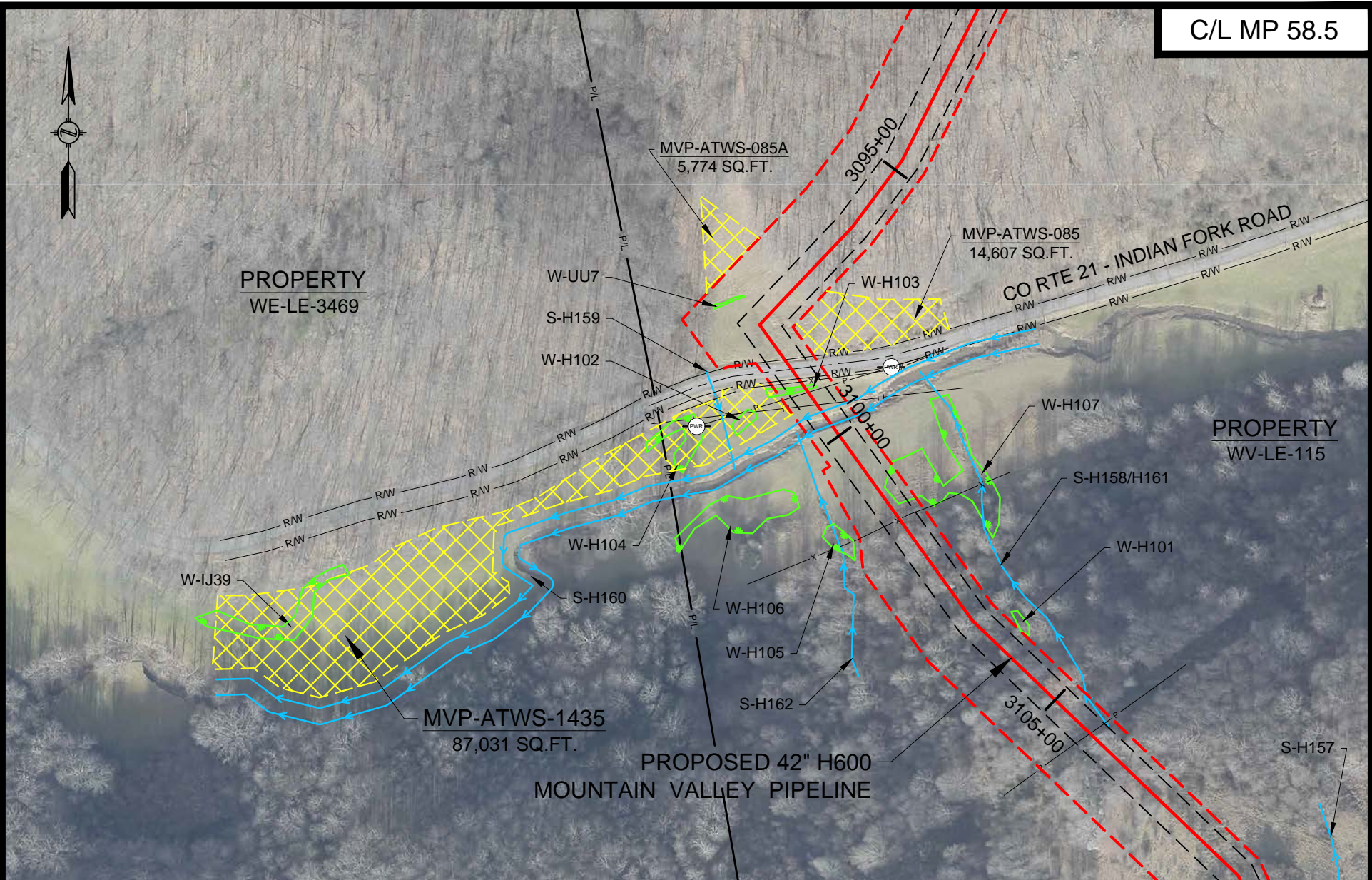


CONSTRUCTION DETAILS - ATWS SITE SPECIFIC

MOUNTAIN VALLEY PIPELINE PROJECT
PROPOSED H-600 PIPELINE
GREENBRIER COUNTY, WEST VIRGINIA

SHEET 1 OF 1

| | |
|----------------------------------|----------|
| DRAWN BY: HEI(DRF) | 10-14-16 |
| DRAFTING CK: | |
| ENVIRONMENTAL CK: | |
| ENGINEERING CK: JJS | 11-27-17 |
| ALIGN. SHEET: PA-GBWV-H600-23 | |
| DRAWING NO.: | |
| CD-ATWS-H600-003 | |
| SCALE: 1" = 200' | REV. 1 |
| DATE OF PLOT: 12/12/2017 1:28 PM | |



HOLLAND
ENGINEERING

220 Hoover Boulevard, Suite 2 | 26555 Evergreen Rd. Suite. 430
 Holland, Michigan 49423-3766 | Southfield, Michigan 48076
 T 616-392-5938 F 616-392-2116 | T 248-827-7322 F 248-827-7549

www.hollandengineering.com

HEI PROJECT NO.: 14-10-052



CONSTRUCTION DETAILS - ATWS SITE SPECIFIC

**MOUNTAIN VALLEY PIPELINE PROJECT
 PROPOSED H-600 PIPELINE
 LEWIS COUNTY, WEST VIRGINIA**

SHEET 1 OF 1

| | |
|----------------------------------|----------|
| DRAWN BY: HEI(TWS) | 10-14-16 |
| DRAFTING CK: | |
| ENVIRONMENTAL CK: | |
| ENGINEERING CK: JJS | 11-27-17 |
| ALIGN. SHEET: PA-LEWV-H600-22 | |
| DRAWING NO.: | |
| CD-ATWS-H600-005 | |
| SCALE: 1" = 200' | REV. 1 |
| DATE OF PLOT: 11/16/2017 8:56 AM | |



HOLLAND
ENGINEERING

220 Hoover Boulevard, Suite 2
Holland, Michigan 49423-3766
T 616-392-5938 F 616-392-2116

26555 Evergreen Rd. Suite. 430
Southfield, Michigan 48076
T 248-827-7322 F 248-827-7549

www.hollandengineering.com

HEI PROJECT NO.: 14-10-052



CONSTRUCTION DETAILS - ATWS SITE SPECIFIC

MOUNTAIN VALLEY PIPELINE PROJECT
PROPOSED H-600 PIPELINE
HARRISON COUNTY, WEST VIRGINIA

SHEET 1 OF 1

| | |
|----------------------------------|----------|
| DRAWN BY: HEI(TWS) | 10-14-16 |
| DRAFTING CK: | |
| ENVIRONMENTAL CK: | |
| ENGINEERING CK: JJS | 11-27-17 |
| ALIGN. SHEET: PA-HAWV-H600-03 | |
| DRAWING NO.: | |
| CD-ATWS-H600-006 | |
| SCALE: 1" = 120' | REV. 1 |
| DATE OF PLOT: 11/16/2017 8:56 AM | |