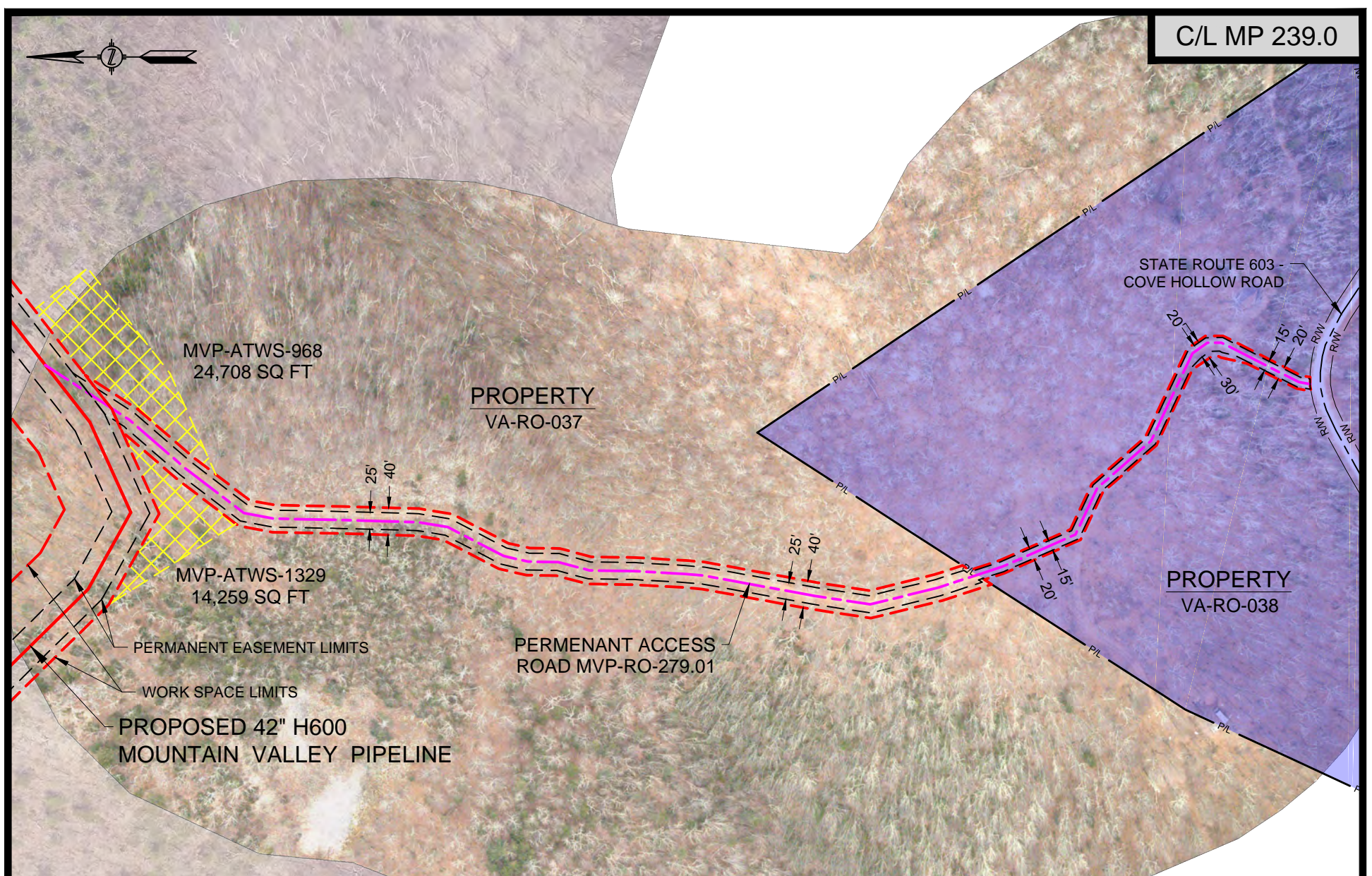


**Mountain Valley Pipeline, LLC
Mountain Valley Pipeline Project
Docket No. CP16-10-000**

**Implementation Plan
December 2017 Supplement**

Attachment IP-17



HOLLAND
ENGINEERING

220 Hoover Boulevard, Suite 2
Holland, Michigan 49423-3766
T 616-392-5938 F 616-392-2116

26555 Evergreen Rd, Suite. 430
Southfield, Michigan 48076
T 248-827-7322 F 248-827-7549

www.hollandengineering.com

HEI PROJECT NO.: 14-10-052

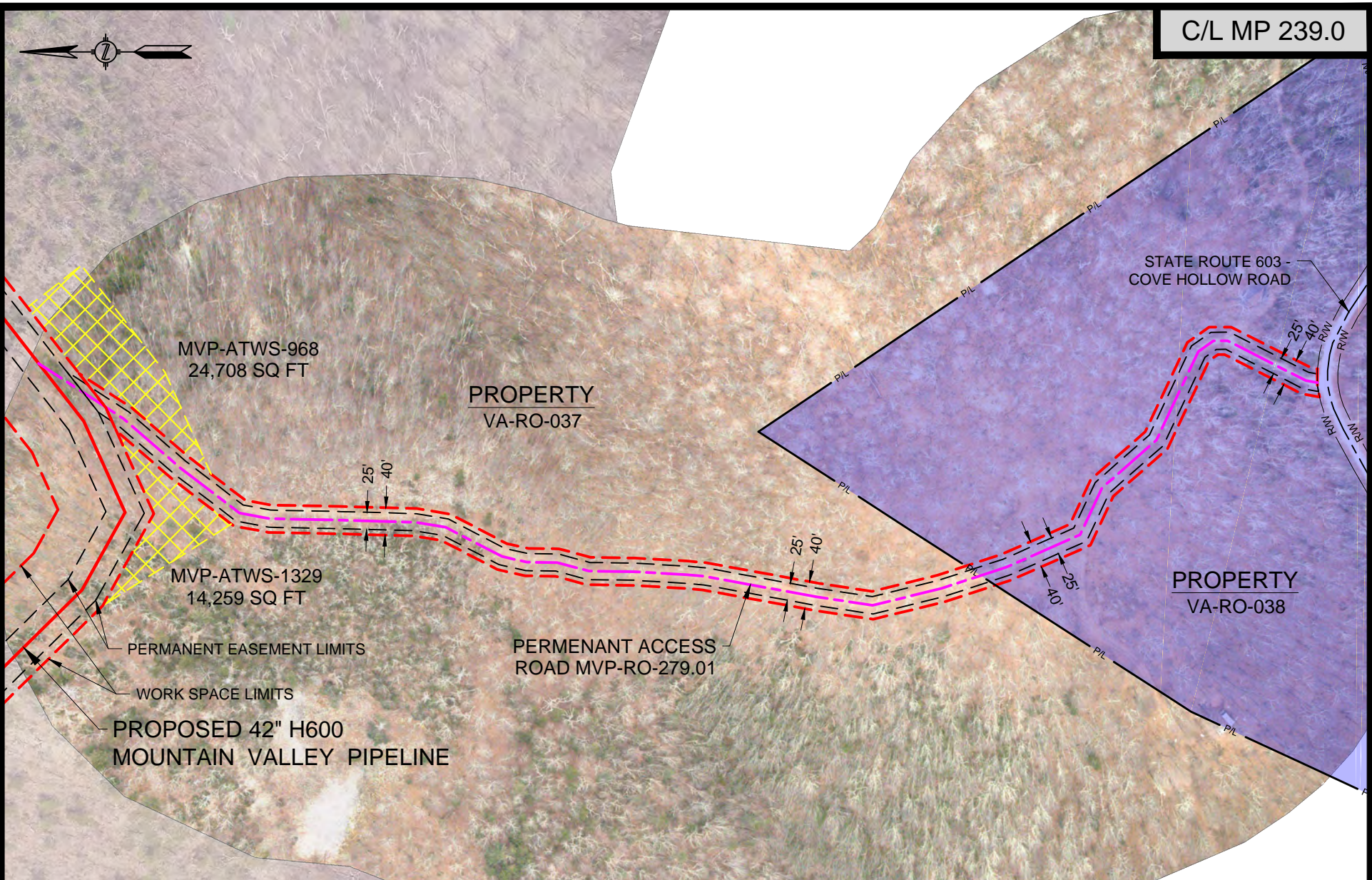
Mountain Valley
PIPELINE

PROPOSED ACCESS ROAD ADJUSTMENT - MP 239.0

MOUNTAIN VALLEY PIPELINE PROJECT
PROPOSED H600 PIPELINE
ROANOKE COUNTY, VIRGINIA

SHEET 1 OF 2

DRAWN BY: HEI(DRF)	11-25-17
DRAFTING CK:	
ENVIRONMENTAL CK:	
ENGINEERING CK:	
ALIGN. SHEET: MVP-QDAR-H600-96	
DRAWING NO.:	
PRM-H600-007	
SCALE: 1" = 200'	REV. 0
DATE OF PLOT: 11/25/2017 2:04 PM	



MVP-ATWS-968
24,708 SQ FT

PROPERTY
VA-RO-037

MVP-ATWS-1329
14,259 SQ FT

PROPERTY
VA-RO-038

PERMANENT EASEMENT LIMITS
WORK SPACE LIMITS
PROPOSED 42" H600
MOUNTAIN VALLEY PIPELINE

PERMANENT ACCESS
ROAD MVP-RO-279.01

HOLLAND
ENGINEERING

220 Hoover Boulevard, Suite 2 | 26555 Evergreen Rd, Suite. 430
Holland, Michigan 49423-3766 | Southfield, Michigan 48076
T 616-392-5938 F 616-392-2116 | T 248-827-7322 F 248-827-7549

www.hollandengineering.com

HEI PROJECT NO.: 14-10-052



PROPOSED ACCESS ROAD - MP 239.0
MOUNTAIN VALLEY PIPELINE PROJECT
PROPOSED H600 PIPELINE
ROANOKE COUNTY, VIRGINIA

SHEET 2 OF 2

DRAWN BY: HEI(DRF)	11-25-17
DRAFTING CK:	
ENVIRONMENTAL CK:	
ENGINEERING CK:	
ALIGN. SHEET: MVP-QDAR-H600-96	
DRAWING NO.:	
PRM-H600-007	
SCALE: 1" = 200'	REV. 0
DATE OF PLOT: 11/25/2017 9:55 AM	