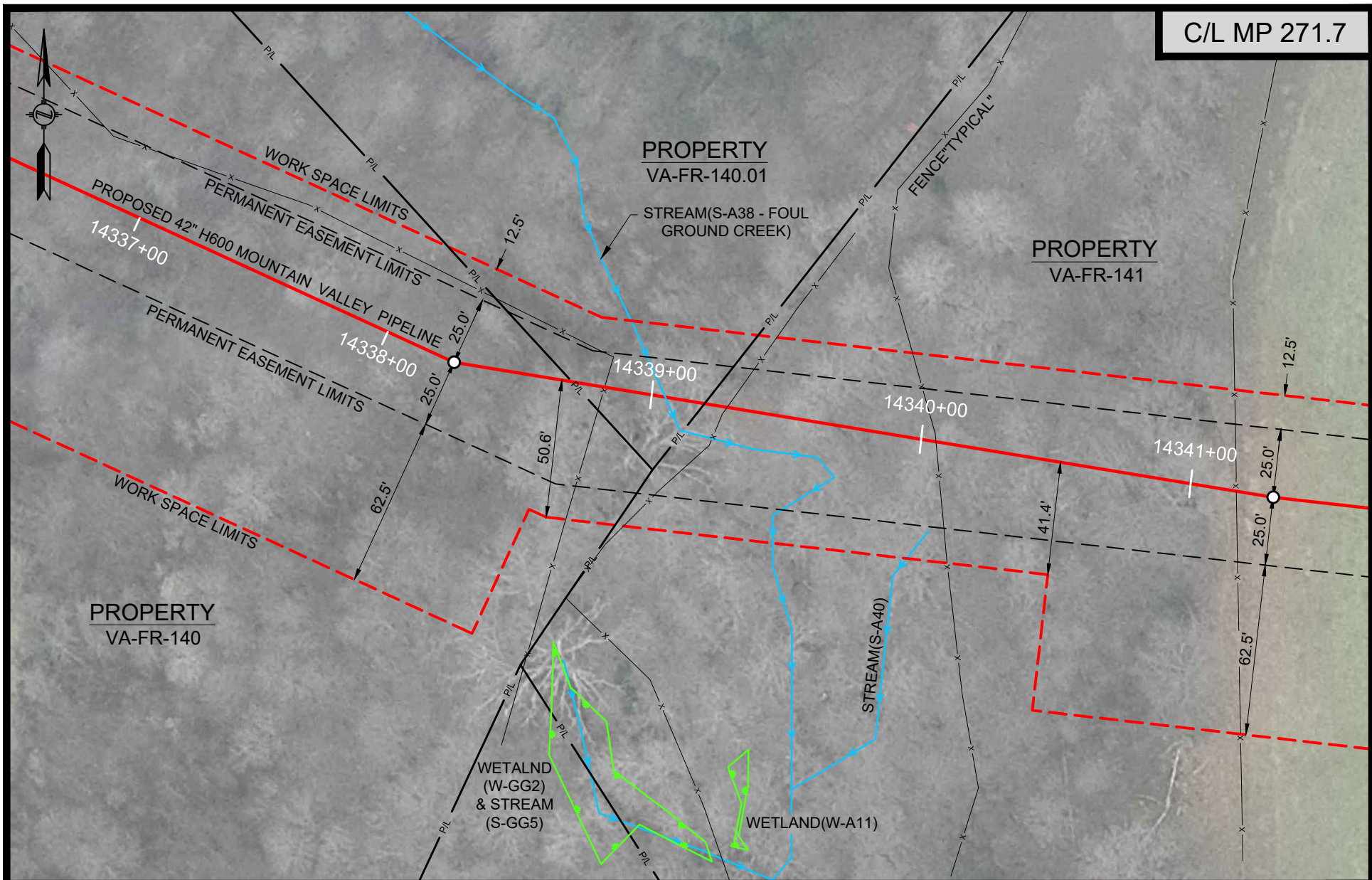


**Mountain Valley Pipeline, LLC
Mountain Valley Pipeline Project
Docket No. CP16-10-000**

**Implementation Plan
December 2017 Supplement**

Attachment IP-25



HOLLAND
ENGINEERING

220 Hoover Boulevard, Suite 2 | 26555 Evergreen Rd. Suite. 430
Holland, Michigan 49423-3766 | Southfield, Michigan 48076
T 616-392-5938 F 616-392-2116 | T 248-827-7322 F 248-827-7549

www.hollandengineering.com

HEI PROJECT NO.: 14-10-052

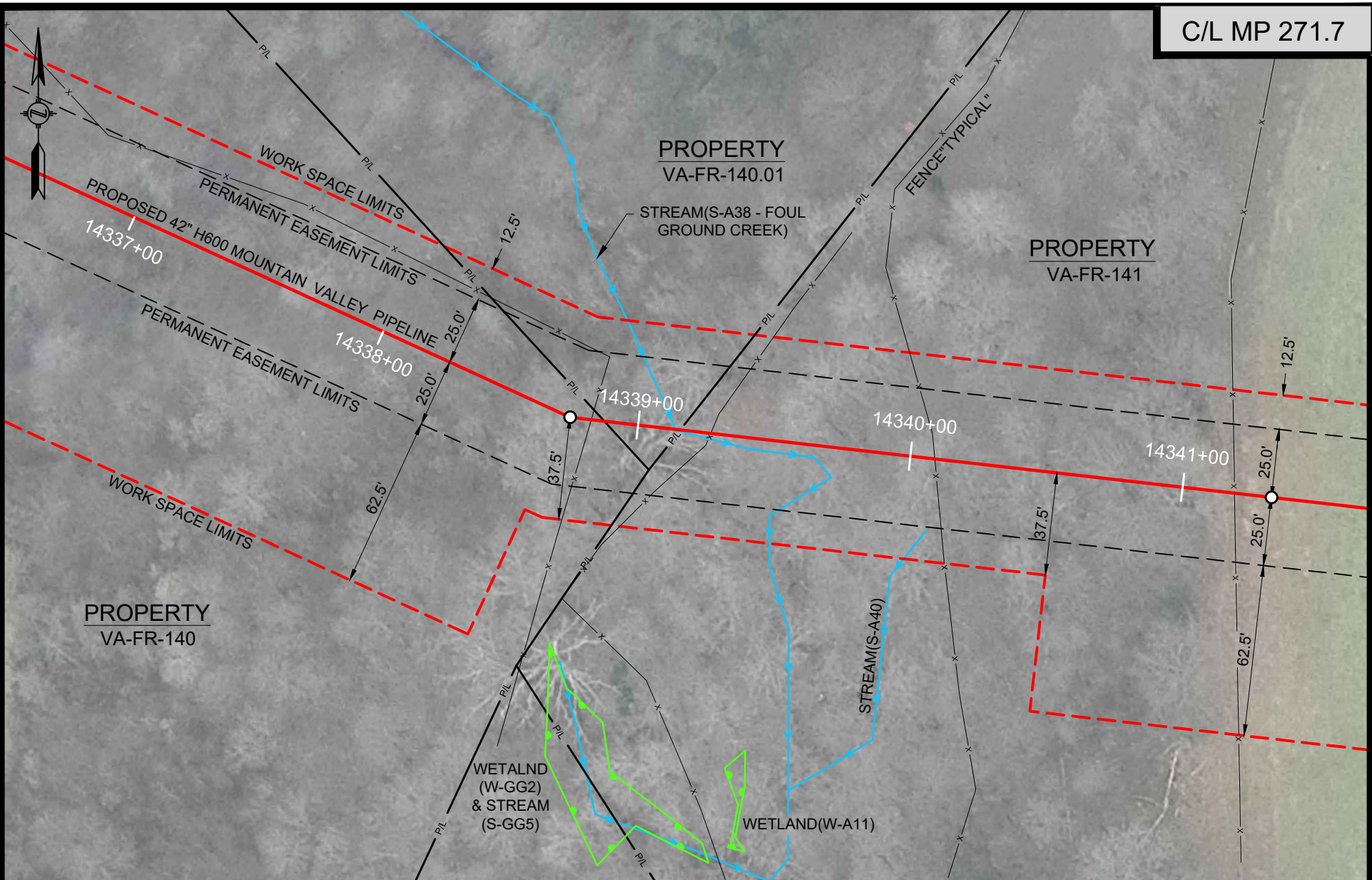


PROPOSED ROUTE ADJUSTMENT - MP 271.7

MOUNTAIN VALLEY PIPELINE PROJECT
PROPOSED H600 PIPELINE
FRANKLIN COUNTY, VIRGINIA

SHEET 1 OF 2

DRAWN BY: HEI(DRF)	11-25-17
DRAFTING CK:	
ENVIRONMENTAL CK:	
ENGINEERING CK:	
ALIGN. SHEET: PA-FRVA-H600-27	
DRAWING NO.:	
PRM-H600-008	
SCALE: 1" = 50'	REV. 0
DATE OF PLOT: 11/25/2017 1:56 PM	



HOLLAND ENGINEERING

220 Hoover Boulevard, Suite 2
Holland, Michigan 49423-3766
T 616-392-5938 F 616-392-2116

26555 Evergreen Rd. Suite. 430
Southfield, Michigan 48076
T 248-827-7322 F 248-827-7549

www.hollandengineering.com

HEI PROJECT NO.: 14-10-052



PROPOSED ROUTE - MP 271.7

MOUNTAIN VALLEY PIPELINE PROJECT

PROPOSED H600 PIPELINE

FRANKLIN COUNTY, VIRGINIA

SHEET 2 OF 2

DRAWN BY: HEI(DRF)	11-25-17
DRAFTING CK:	
ENVIRONMENTAL CK:	
ENGINEERING CK:	
ALIGN. SHEET: PA-FRVA-H600-27	
DRAWING NO.:	
PRM-H600-008	
SCALE: 1" = 50'	REV. 0
DATE OF PLOT: 11/25/2017 1:56 PM	