



625 Liberty Avenue, Suite 1700 | Pittsburgh, PA 15222
844-MVP-TALK | mail@mountainvalleypipeline.info
www.mountainvalleypipeline.info

March 1, 2018

Kimberly D. Bose, Secretary
Federal Energy Regulatory Commission
888 First Street NE
Washington, DC 20426

Re: Mountain Valley Pipeline, LLC
Docket No. CP16-10-000
Notice of Route Reversion

Dear Ms. Bose:

On October 13, 2017, the Federal Energy Regulatory Commission issued an order granting a Certificate of Public Convenience and Necessity to Mountain Valley Pipeline, LLC ("Certificate Order").


As part of its Implementation Plan for the Project, Mountain Valley filed Attachment IP-5c1, which included modification VAR-WV-WE-03 between mileposts 2.89 and 3.55. Mountain Valley subsequently received a Notice to Proceed for construction activities on the properties associated with modification VAR-WV-WE-03.

Upon further review, Mountain Valley is reverting to the route approved in the Certificate Order in this area. Attached hereto are maps showing the route associated with modification VAR-WV-WE-03 and the certificated route.

If you have any questions, please do not hesitate to contact me at (412) 553-5786 or meggerding@eqt.com. Thank you.

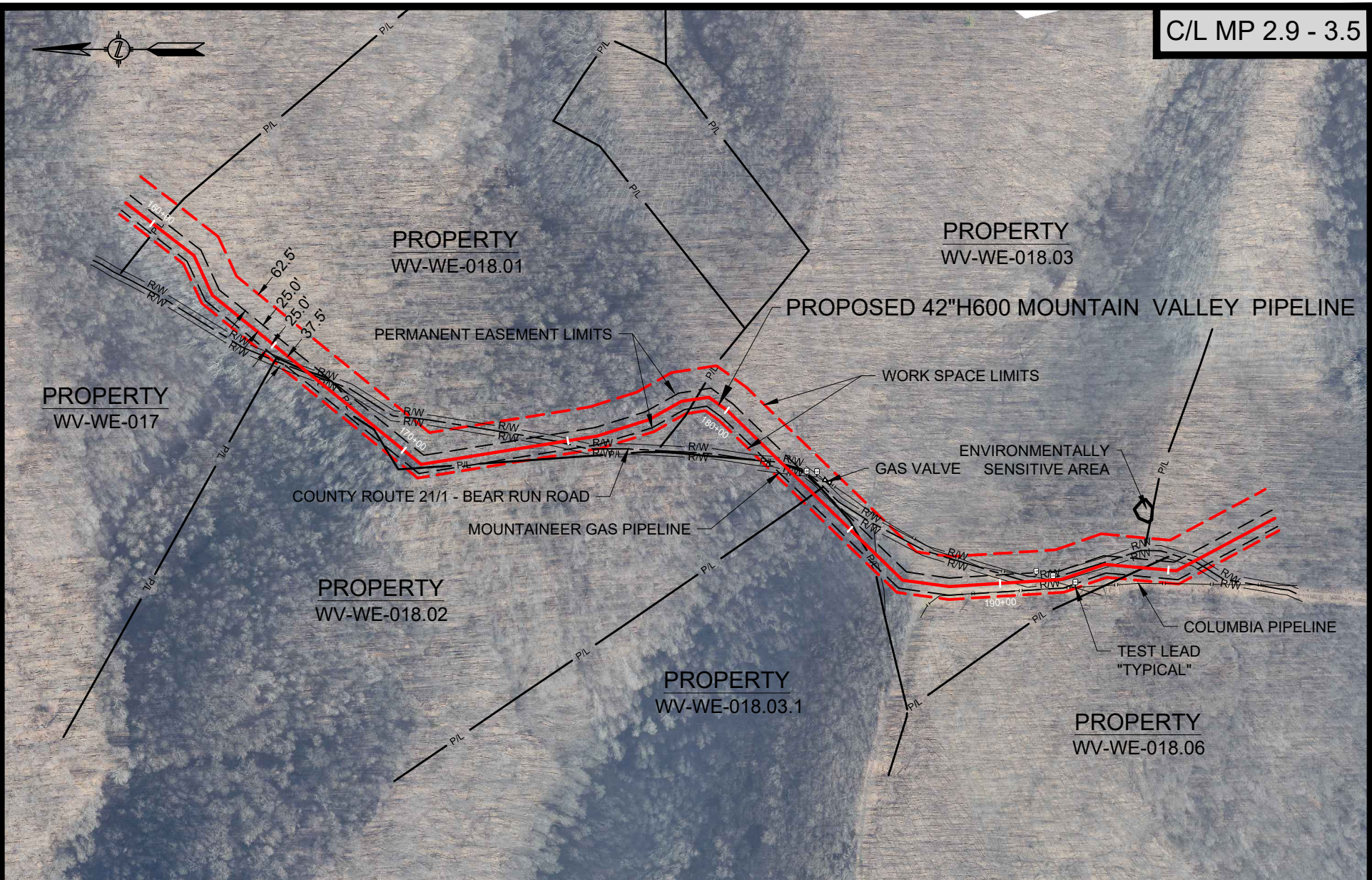
Respectfully submitted,

MOUNTAIN VALLEY PIPELINE, LLC
by and through its operator,
EQM Gathering Opco, LLC

By: 
Matthew Eggerding
Senior Counsel, Midstream

Attachments

cc: All Parties
Paul Friedman, OEP
Lavinia DiSanto, Cardno, Inc.
Doug Mooneyhan, Cardno, Inc.



HOLLAND
ENGINEERING

220 Hoover Boulevard, Suite 2
Holland, Michigan 49423-3766
T 616-392-5938 F 616-392-2116

26555 Evergreen Rd, Suite. 430
Southfield, Michigan 48076
T 248-827-7322 F 248-827-7549

www.hollandengineering.com

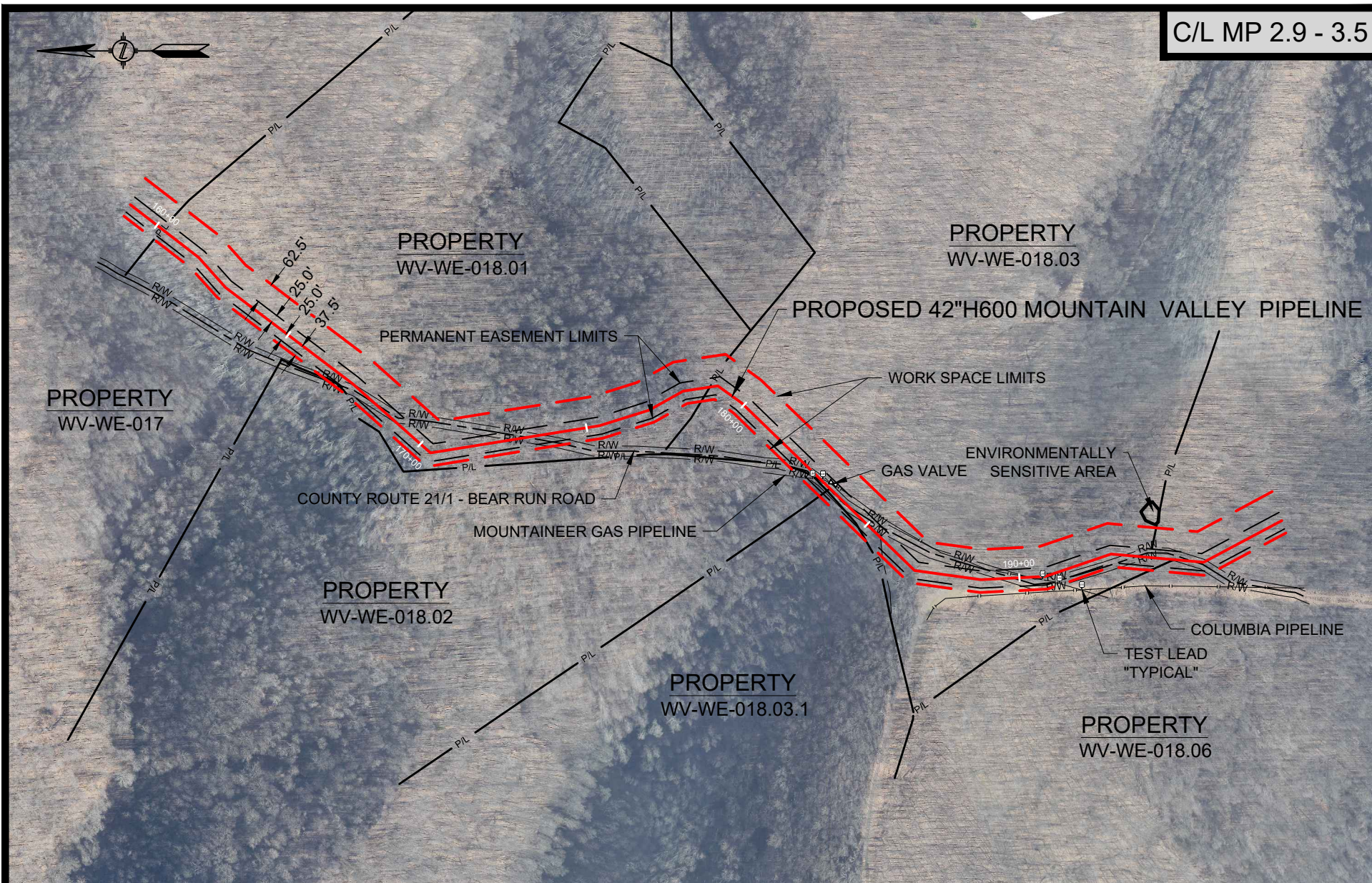
HEI PROJECT NO.: 14-10-052



Mountain Valley
PIPELINE
MODIFICATION VAR-WV-WE-03 - MP 2.9 - 3.5
MOUNTAIN VALLEY PIPELINE PROJECT
PROPOSED H-600 PIPELINE
WETZEL COUNTY, WEST VIRGINIA

SHEET 1 OF 2

DRAWN BY: HEI(DRF)	02-28-18
DRAFTING CK:	
ENVIRONMENTAL CK:	
ENGINEERING CK:	
ALIGN. SHT: PA-WEVV-H600-04 & 05	
DRAWING NO.:	
PRM-H600-013	
SCALE: 1" = 400'	REV. 0
DATE OF PLOT: 2/28/2018 3:38 PM	



HOLLAND
ENGINEERING

220 Hoover Boulevard, Suite 2 | 26555 Evergreen Rd. Suite. 430
Holland, Michigan 49423-3766 | Southfield, Michigan 48076
T 616-392-5938 F 616-392-2116 | T 248-827-7322 F 248-827-7549

www.hollandengineering.com

HEI PROJECT NO.: 14-10-052



CERTIFICATED ROUTE - MP 2.9 - 3.5
MOUNTAIN VALLEY PIPELINE PROJECT
PROPOSED H-600 PIPELINE
WETZEL COUNTY, WEST VIRGINIA

SHEET 2 OF 2

DRAWN BY: HEI(DRF)	08-02-17
DRAFTING CK:	
ENVIRONMENTAL CK:	
ENGINEERING CK:	
ALIGN. SHT: PA-WEVV-H600-04 & 05	
DRAWING NO.: PRM-H600-013	
SCALE: 1" = 400'	REV. 0
DATE OF PLOT: 2/28/2018 3:38 PM	