



April 30, 2018

Mr. Roger Kirchen  
Virginia Department of Historic Resources  
Division of Review and Compliance  
2801 Kensington Avenue  
Richmond, VA 23221

**Subject: Mountain Valley Pipeline Project  
Additional Information Regarding Temporary Impacts within Big Stony  
Creek Historic District (035-5127)  
FERC DOCKET NO. CP16-10, DHR FILE #2014 1194**

Dear Mr. Kirchen:

Mountain Valley Pipeline, LLC (Mountain Valley), a joint venture between affiliates of EQT Midstream Partners, LP, NextEra Energy, Inc., Con Edison Gas Midstream, LLC, WGL Holdings, Inc., and RGC Midstream, LLC, is providing herein, for your review and comment, additional information related to Mountain Valley's crossing of the Big Stony Creek Railroad (035-5126) and the proposed use of temporary laydown yard MVP-LY-029 within the Big Stony Creek Historic District (035-5127).

As you know, the Federal Energy Regulatory Commission (FERC)—the lead federal agency for compliance with the National Environmental Policy Act and Section 106 of the National Historic Preservation Act (NHPA) for this undertaking—has been consulting with your office on the treatment of historic properties that will be adversely impacted by the proposed project. A document titled *Mountain Valley Pipeline Project Revised Historic Property Treatment Plan: Big Stony Creek Historic District (035-5127)* (Treatment Plan), dated February 2018, was developed in coordination with your office to document Mountain Valley's efforts to coordinate with consulting parties and other stakeholders to identify mitigation measures appropriate to address the proposed project's potential adverse effects to the Big Stony Creek Historic District. The Treatment Plan also proposed mitigation measures designed to mitigate the adverse effects of the project. In accordance with Stipulation III.B.1 of the Programmatic Agreement (PA) for the Project, your office accepted the Treatment Plan in a letter dated March 8, 2018. In a letter dated March 13, 2018, the FERC indicated that it agreed with your office's finding.

Mountain Valley proposes to bridge the Big Stony Creek Railroad at MP 200.45 with timber matting. A figure depicting the proposed crossing method is provided as Attachment 1 – Figure 1. It should be noted that the timber mat bridge will be constructed to temporarily allow equipment to be moved across the railroad. The railroad will not be directly impacted and will be bored as detailed in Appendix N of the *Criteria of Effects Report* (May 2017).

Further, Mountain Valley is considering a variance request for temporary laydown yard MVP-LY-029—currently an open field associated with the APG Lime Plant II—located approximately 1,709

feet northeast of MP 200.7 (Attachment 1 – Figure 2). 4.6 acres of the laydown yard was reported on in *Mountain Valley Pipeline Project, Phase IB Combined County Archaeological Survey Report, Addendum I, Giles, Montgomery, Roanoke, and Franklin Counties, Virginia, and Phase II Archaeological Evaluation Site 44FR0412, Franklin County, Virginia* (June 2017). VDHR provided concurrence on this report August 30, 2017. On April 1, 2018, the cultural team concluded that the remaining archaeological APE for MVP-LY-029 (0.5 acres) was sufficiently disturbed from quarry activities, as assessed by prior survey and by aerial examination, to possess low archaeological potential and no additional survey is recommended.

In summary, we believe that the temporary timber mat bridge will not create any new adverse impacts on either the NRHP-eligible Big Stony Creek Railroad or the NRHP-eligible Big Stony Creek Historic District. Laydown yard MVP-LY-029 is currently associated with a lime quarry and will be returned to that industrial use following construction; the temporary use of this disturbed laydown yard will not create any new adverse impacts on the Big Stony Creek Historic District. No further archaeological survey is recommended. Adverse impacts related to the Mountain Valley Pipeline Project, including the temporary use of the timber mat bridge and laydown yard MVP-LY-029, will be effectively mitigated through implementation of the approved Treatment Plan. We request your concurrence with these recommendations.

Please review this information under Stipulation IV.A. in the executed Programmatic Agreement for the project. This report will also be filed with the Federal Energy Regulatory Commission, lead federal agency for the project. Per Stipulation IV.E., comments should be submitted to Paul Friedman at the FERC. He can be reached at:

Mr. Paul Friedman  
Federal Energy Regulatory Commission  
888 First Street NE, Room 1A  
Washington, DC 20426

(202) 502-8059  
Paul.Friedman@ferc.gov

Should you have any questions during your review, feel free to contact Evelyn Tidlow by telephone at (612) 812-5478 or by e-mail at [E.Tidlow@gaiconsultants.com](mailto:E.Tidlow@gaiconsultants.com). Thank you for your attention.

Sincerely,



Brian Clauto  
Senior Environmental Coordinator

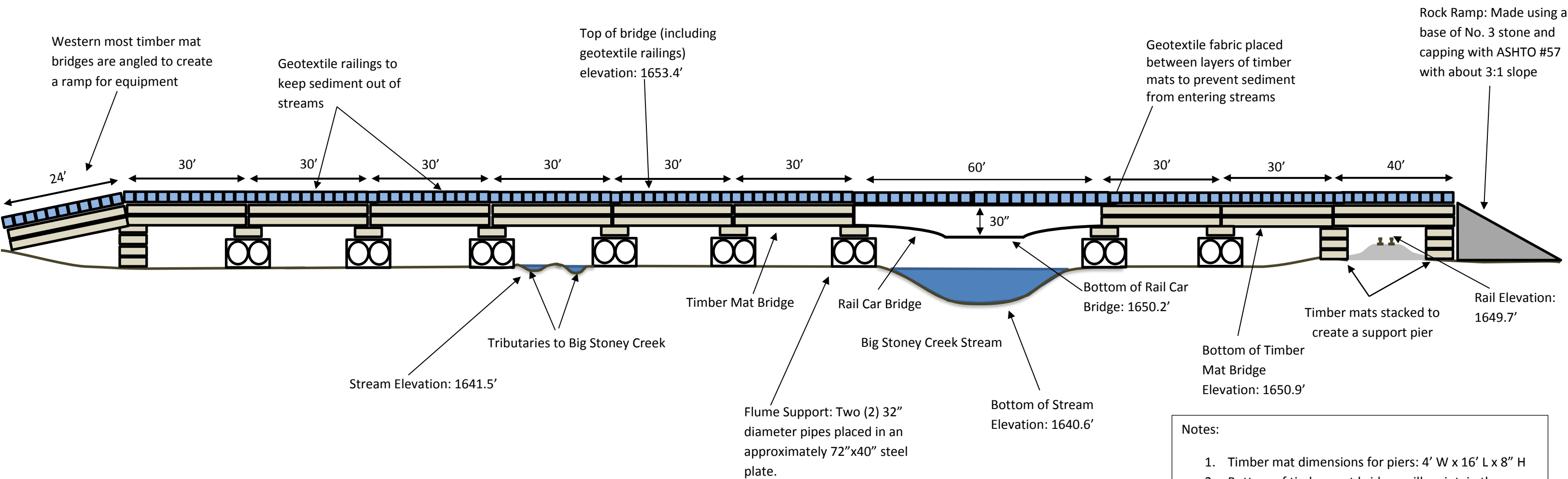
Attachments:

Figure 1 and 2  
cc: Megan Neylon, EQT (with no attachments)  
Evelyn Tidlow, GAI (with no attachments)



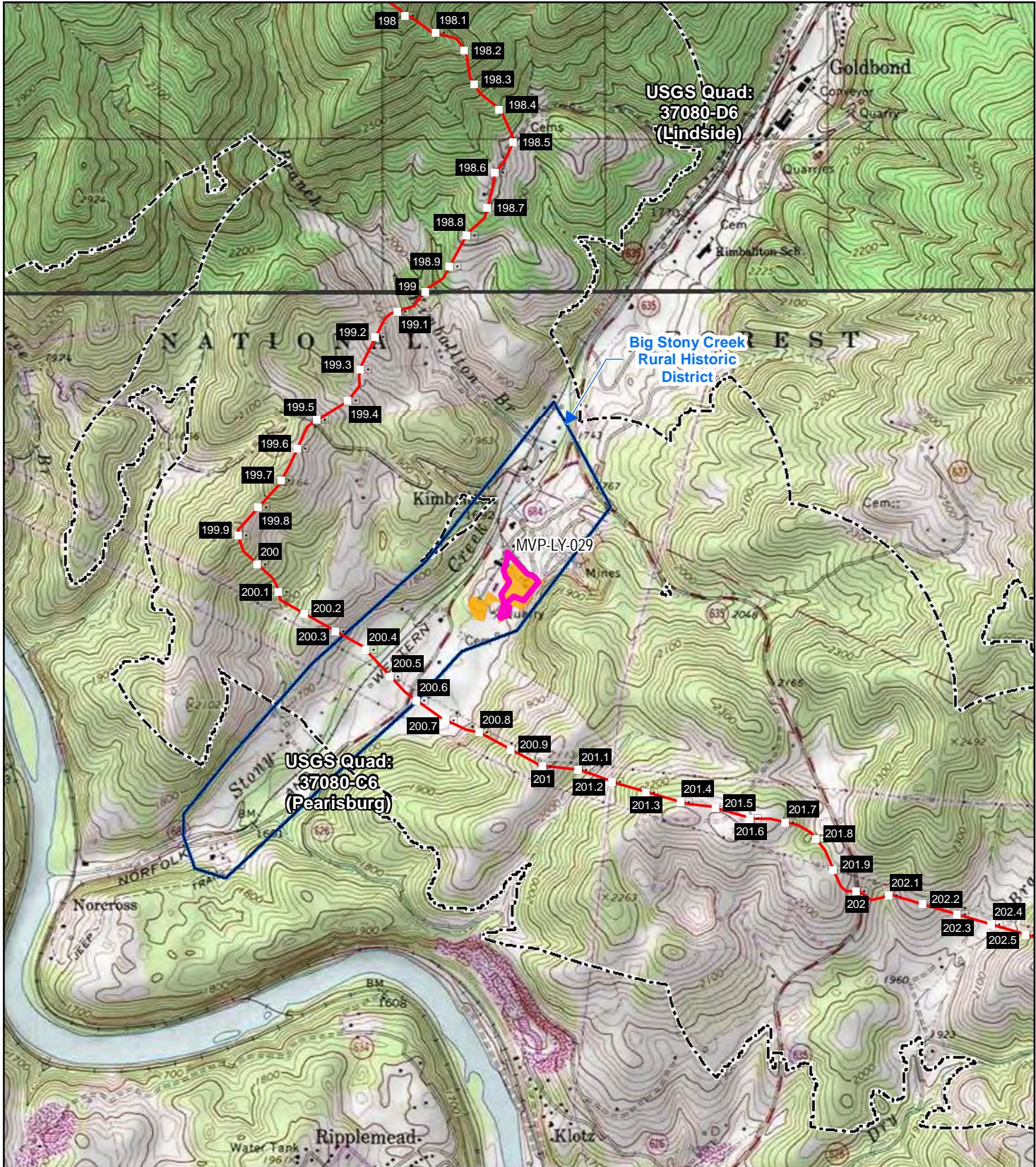
2200 Rice Drive | Canonsburg, PA 15317  
844-MVP-TALK | [mail@mountainvalleypipeline.info](mailto:mail@mountainvalleypipeline.info)  
[www.mountainvalleypipeline.info](http://www.mountainvalleypipeline.info)

**ATTACHMENT 1**  
**Figures**



- Notes:
1. Timber mat dimensions for piers: 4' W x 16' L x 8" H
  2. Bottom of timber mat bridges will maintain the same elevation throughout the entire crossing
  3. Timber mat bridge is 6" above the train track rails
  4. Timber mat bridge over railroad tracks will be installed only during equipment crossings
  5. Elevations and lengths are approximate and subject to change based on field conditions
  6. Bridge is approximately 16' wide
  7. Timber mat bridge elevation without geotextile railings is approximately 1652.6'
  8. Timber mats will be placed on top of flume supports to reach specified elevation





<b>Mountain Valley Pipeline Project</b>		NAD 1983 UTM 17N	1:24,000	
<p><b>Attachment 1 - Figure 2</b> Location of MVP-LY-029 USGS</p> <p>APRIL 2018</p> <p>Data Sources: Orthoimagery 2011, WVGISDC.</p>	<b>Legend</b> <ul style="list-style-type: none"> <li> Milepost</li> <li> Pipeline Route</li> <li> Proposed MVP-LY-029</li> <li> MVP-LY-029 Previously Surveyed as part of MVP Virginia Combined County Report</li> <li> Big Stony Creek Rural Historic District</li> <li> Indirect APE</li> <li> USGS 7.5 Minute Topographic Quadrangle Boundary</li> </ul>			