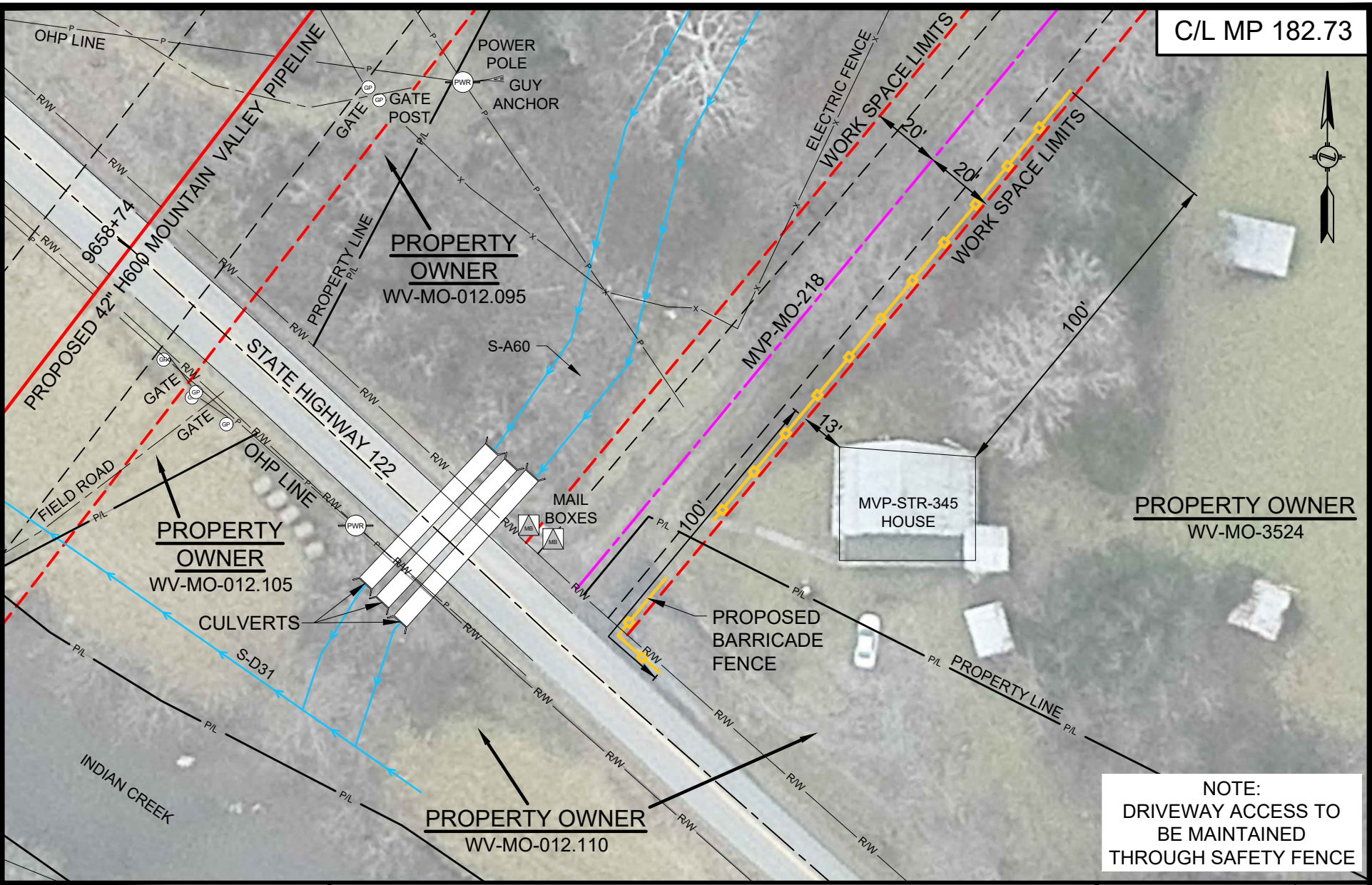


C/L MP 182.73



**NOTE:**  
 DRIVEWAY ACCESS TO  
 BE MAINTAINED  
 THROUGH SAFETY FENCE

**HOLLAND**  
 ENGINEERING

220 Hoover Boulevard, Suite 2  
 Holland, Michigan 49423-3766  
 T 616-392-5938 F 616-392-2116

26555 Evergreen Rd. Suite. 430  
 Southfield, Michigan 48076  
 T 248-827-7322 F 248-827-7549

www.hollandengineering.com

HEI PROJECT NO.: 14-10-052



**CONSTRUCTION DETAILS - RESIDENTIAL SITE SPECIFIC**

**MOUNTAIN VALLEY PIPELINE PROJECT  
 PROPOSED H-600 PIPELINE  
 MONROE COUNTY, WEST VIRGINIA**

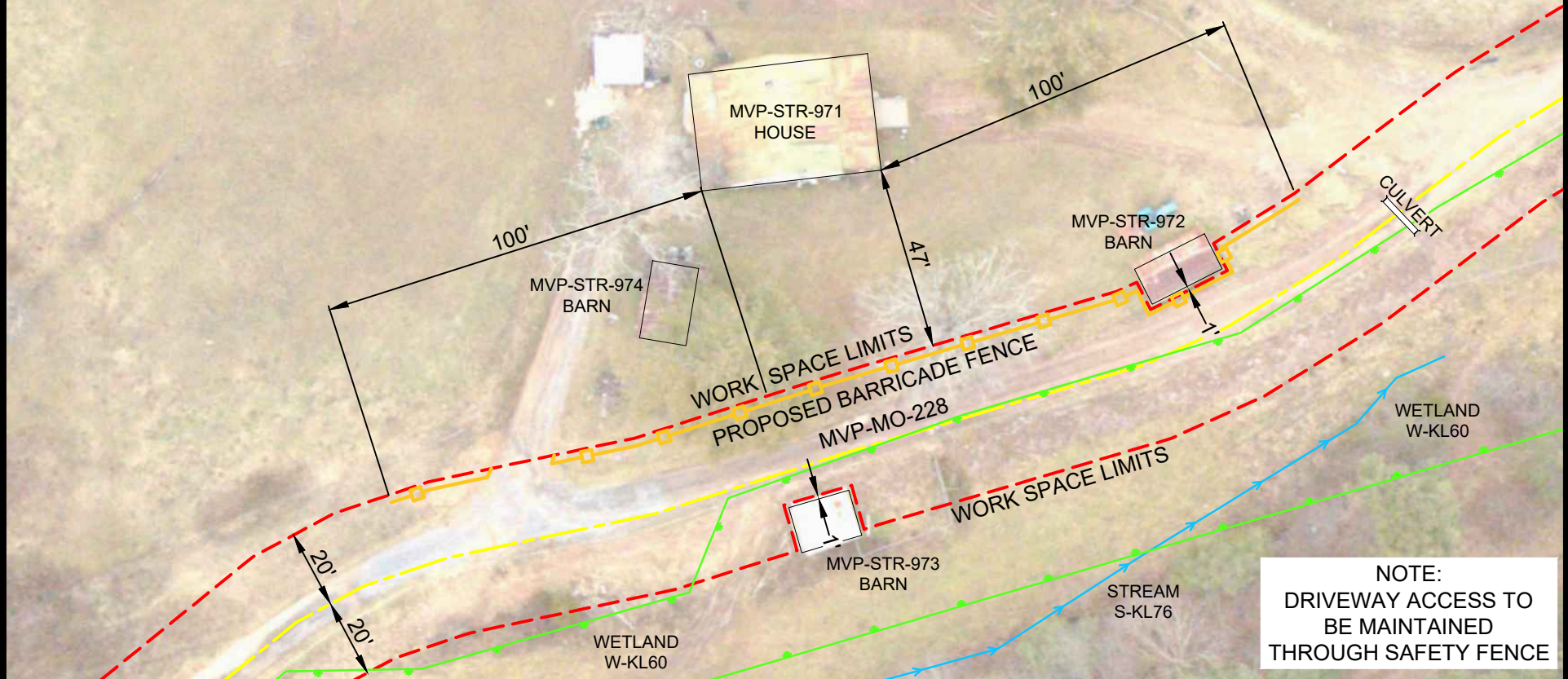
SHEET 1 OF 1

|                                  |          |
|----------------------------------|----------|
| DRAWN BY: HEI(DRF)               | 10/14/16 |
| DRAFTING CK:                     |          |
| ENVIRONMENTAL CK:                |          |
| ENGINEERING CK: JJS              | 11-27-17 |
| ALIGN. SHEET: PA-MOWV-H600-09    |          |
| DRAWING NO.:                     |          |
| <b>RSS-H600-073</b>              |          |
| SCALE: 1" = 40'                  | REV. 2   |
| DATE OF PLOT: 12/12/2017 1:35 PM |          |





**PROPERTY OWNER**  
WV-MO-5338



**NOTE:**  
DRIVEWAY ACCESS TO  
BE MAINTAINED  
THROUGH SAFETY FENCE

**HOLLAND**  
**ENGINEERING**

220 Hoover Boulevard, Suite 2  
Holland, Michigan 49423-3766  
T 616-392-5938 F 616-392-2116

26555 Evergreen Rd. Suite. 430  
Southfield, Michigan 48076  
T 248-827-7322 F 248-827-7549

www.hollandengineering.com

HEI PROJECT NO.: 14-10-052



**CONSTRUCTION DETAILS - RESIDENTIAL SITE SPECIFIC**

**MOUNTAIN VALLEY PIPELINE PROJECT**  
**PROPOSED H-600 PIPELINE**  
**MONROE COUNTY, WEST VIRGINIA**

SHEET 1 OF 1

|                                  |          |
|----------------------------------|----------|
| DRAWN BY: HEI(DRF)               | 10/02/17 |
| DRAFTING CK:                     |          |
| ENVIRONMENTAL CK:                |          |
| ENGINEERING CK: JJS              | 11-27-17 |
| ALIGN. SHEET: MVP-QDAR-H600-66   |          |
| DRAWING NO.:                     |          |
| <b>RSS-H600-223</b>              |          |
| SCALE: 1" = 40'                  | REV. 2   |
| DATE OF PLOT: 11/16/2017 2:32 PM |          |