



625 Liberty Avenue, Suite 1700 | Pittsburgh, PA 15222
844-MVP-TALK | mail@mountainvalleypipeline.info
www.mountainvalleypipeline.info

June 1, 2018

Ms. Kimberly D. Bose, Secretary
Federal Energy Regulatory Commission
888 First Street NE
Washington, DC 20426

Re: Mountain Valley Pipeline, LLC
Docket No. CP16-10-000
Weekly Status Report No. 28

Dear Ms. Bose:

On October 13, 2017, the Federal Energy Regulatory Commission issued an order granting a Certificate of Public Convenience and Necessity to Mountain Valley Pipeline, LLC (“Mountain Valley”) for the Mountain Valley Pipeline Project in the above-identified docket. On October 31, 2017, Mountain Valley submitted its Implementation Plan for the Project. In compliance with Environmental Condition Nos. 8 and 14, Mountain Valley submits its status report for the week ending May 11, 2018.

If you have any questions, please do not hesitate to contact me at (412) 553-5786 or meggerding@eqt.com. Thank you.

Respectfully submitted,
MOUNTAIN VALLEY PIPELINE, LLC
by and through its operator,
EQM Gathering OPCO, LLC

By: 
Matthew Eggerding
Senior Counsel, Midstream

Attachments

cc: All Parties
Paul Friedman, OEP
Lavinia DiSanto, Cardno, Inc.
Doug Mooneyhan, Cardno, Inc.

FEDERAL AUTHORIZATIONS

All federal authorizations have been received.

CONSTRUCTION STATUS

Construction activities and progress are included in Appendix A.

WORK PLANNED FOR NEXT REPORTING PERIOD

Tree felling will continue on all Spreads. Mechanized clearing and Preparing ROW will continue on Spreads A, B, C, D, F, G, and H. Site construction will continue at the authorized compressor stations and interconnects in West Virginia. Road construction will continue in West Virginia. Mechanized clearing will commence on Spread E and I. Trenching will commence on Spread F.

SCHEDULE CHANGES

There are no required schedule changes for waterbody crossings or work in other environmentally sensitive areas.

ENVIRONMENTAL ISSUES

The table in Appendix B summarizes problem area reports (PAR) and noncompliance reports (NCR) issued for the Project during the reporting period, as well as corrective actions taken to resolve the issue (including the cost and effectiveness of the corrective actions).

In the event Mountain Valley receives correspondence from other federal, state, or local permitting agencies concerning instances of noncompliance during the reporting period, Mountain Valley will include or reference such correspondence, as well as Mountain Valley's response thereto, in Appendix C.

LANDOWNER RESOLUTIONS

The table in Appendix D includes information regarding landowner concerns and how they were resolved.

Activity Name	Activity Status	% Complete
---------------	-----------------	------------

Compressor Stations

Bradshaw

Bradshaw Civil - Tree Felling	Completed	100%
Bradshaw Civil - Road Construction	In Progress	53.28%
Bradshaw Civil - Site Construction	In Progress	16.5%
Bradshaw Civil - Post Site Construction/Reclamation	Not Started	0%
Bradshaw Mechanical - Office Building Area	Not Started	0%
Bradshaw Mechanical - Discharge Filter Area	Not Started	0%
Bradshaw Mechanical - Auxiliary Equipment Area	Not Started	0%
Bradshaw Mechanical - Blowdown Silencer Area	Not Started	0%
Bradshaw Mechanical - Gas Cooler Area	Not Started	0%
Bradshaw Mechanical - Compressor Building Area	Not Started	0%
Bradshaw Mechanical - Suction Filter Area	Not Started	0%
Bradshaw Mechanical - Launcher/Receiver Area	Not Started	0%
Bradshaw Mechanical - Produced Fluids Area	Not Started	0%
Bradshaw Mechanical - Site Work Area	Not Started	0%
Bradshaw Mechanical - Commissioning	Not Started	0%

Harris

Harris Civil - Tree Felling	Completed	100%
Harris Civil - Road Construction	In Progress	87.19%
Harris Civil - Site Construction	In Progress	91.05%
Harris Civil - Post Site Construction/Reclamation	Not Started	0%
Harris Mechanical - Office Building Area	Not Started	0%
Harris Mechanical - Discharge Filter Area	Not Started	0%
Harris Mechanical - Auxiliary Equipment Area	Not Started	0%
Harris Mechanical - Blowdown Silencer Area	Not Started	0%
Harris Mechanical - Gas Cooler Area	Not Started	0%
Harris Mechanical - Compressor Building Area	Not Started	0%
Harris Mechanical - Suction Filter Area	Not Started	0%
Harris Mechanical - Launcher/Receiver Area	Not Started	0%
Harris Mechanical - Produced Fluids Area	Not Started	0%
Harris Mechanical - Site Work Area	Not Started	0%
Harris Mechanical - Commissioning	Not Started	0%

Stallworth

Stallworth Civil - Tree Felling	Completed	100%
Stallworth Civil - Road Construction	In Progress	60.84%
Stallworth Civil - Site Construction	In Progress	21.62%
Stallworth Civil - Post Site Construction/Reclamation	Not Started	0%
Stallworth Mechanical - Office Building Area	Not Started	0%
Stallworth Mechanical - Discharge Filter Area	Not Started	0%
Stallworth Mechanical - Auxiliary Equipment Area	Not Started	0%
Stallworth Mechanical - Blowdown Silencer Area	Not Started	0%
Stallworth Mechanical - Gas Cooler Area	Not Started	0%
Stallworth Mechanical - Compressor Building Area	Not Started	0%
Stallworth Mechanical - Suction Filter Area	Not Started	0%
Stallworth Mechanical - Launcher/Receiver Area	Not Started	0%
Stallworth Mechanical - Produced Fluids Area	Not Started	0%
Stallworth Mechanical - Site Work Area	Not Started	0%
Stallworth Mechanical - Commissioning	Not Started	0%

Activity Name	Activity Status	% Complete
---------------	-----------------	------------

Interconnects

Mobley

Mobley Civil - Tree Felling	Completed	100%
Mobley Civil - Road Construction	In Progress	56.66%
Mobley Civil - Site Construction	In Progress	50.9%
Mobley Civil - Post Site Construction/Reclamation	Not Started	0%
Mobley Mechanical - GC Building Area	Not Started	0%
Mobley Mechanical - CV Building Area	Not Started	0%
Mobley Mechanical - Meter Building Area	Not Started	0%
Mobley Mechanical - Filter Area	Not Started	0%
Mobley Mechanical - Launcher/Receiver Area	Not Started	0%
Mobley Mechanical - Site Work Area	Not Started	0%
Mobley Mechanical - Commissioning	Not Started	0%

Sherwood

Sherwood Civil - Tree Felling	Not Started	0%
Sherwood Civil - Road Construction	Not Started	0%
Sherwood Civil - Site Construction	Not Started	0%
Sherwood Civil - Post Site Construction/Reclamation	Not Started	0%
Sherwood Mechanical - GC Building Area	Not Started	0%
Sherwood Mechanical - CV Building Area	Not Started	0%
Sherwood Mechanical - Meter Building Area	Not Started	0%
Sherwood Mechanical - Filter Area	Not Started	0%
Sherwood Mechanical - Launcher/Receiver Area	Not Started	0%
Sherwood Mechanical - Site Work Area	Not Started	0%
Sherwood Mechanical - Commissioning	Not Started	0%

WB

WB Civil - Tree Felling	Completed	100%
WB Civil - Road Construction	In Progress	52.11%
WB Civil - Site Construction	In Progress	80.71%
WB Civil - Post Site Construction/Reclamation	Not Started	0%
WB Mechanical - GC Building Area	Not Started	0%
WB Mechanical - CV Building Area	Not Started	0%
WB Mechanical - Meter Building Area	Not Started	0%
WB Mechanical - Filter Area	Not Started	0%
WB Mechanical - Launcher/Receiver Area	Not Started	0%
WB Mechanical - Site Work Area	Not Started	0%
WB Mechanical - Commissioning	Not Started	0%

Transco

Transco Civil - Tree Felling	Completed	100%
Transco Civil - Road Construction	Not Started	0%
Transco Civil - Site Construction	Not Started	0%
Transco Civil - Post Site Construction/Reclamation	Not Started	0%
Transco Mechanical - GC Building Area	Not Started	0%
Transco Mechanical - CV Building Area	Not Started	0%
Transco Mechanical - Meter Building Area	Not Started	0%
Transco Mechanical - Filter Area	Not Started	0%
Transco Mechanical - Launcher/Receiver Area	Not Started	0%
Transco Mechanical - Site Work Area	Not Started	0%
Transco Mechanical - Commissioning	Not Started	0%

Activity Name	Activity Status	% Complete
---------------	-----------------	------------

Spreads (Pipeline)

Spread A

Spread A - Tree Felling	In Progress	94.78%
Spread A - Clearing	In Progress	11.19%
Spread A - Prepare right-of-way	In Progress	0.75%
Spread A - Trenching	Not Started	0%
Spread A - Stringing	Not Started	0%
Spread A - Welding	Not Started	0%
Spread A - Coating & Wrapping	Not Started	0%
Spread A - Backfilling & Tying-in	Not Started	0%
Spread A - Internal Cleaning	Not Started	0%
Spread A - Final Restoration	Not Started	0%

Spread B

Spread B - Tree Felling	In Progress	99%
Spread B - Clearing	In Progress	1.89%
Spread B - Prepare right-of-way	In Progress	0.93%
Spread B - Trenching	Not Started	0%
Spread B - Stringing	Not Started	0%
Spread B - Welding	Not Started	0%
Spread B - Coating & Wrapping	Not Started	0%
Spread B - Backfilling & Tying-in	Not Started	0%
Spread B - Internal Cleaning	Not Started	0%
Spread B - Final Restoration	Not Started	0%

Spread C

Spread C - Tree Felling	In Progress	99%
Spread C - Clearing	In Progress	8.02%
Spread C - Prepare right-of-way	In Progress	1.19%
Spread C - Trenching	Not Started	0%
Spread C - Stringing	Not Started	0%
Spread C - Welding	Not Started	0%
Spread C - Coating & Wrapping	Not Started	0%
Spread C - Backfilling & Tying-in	Not Started	0%
Spread C - Internal Cleaning	Not Started	0%
Spread C - Final Restoration	Not Started	0%

Spread D

Spread D - Tree Felling	In Progress	99%
Spread D - Clearing	In Progress	11.07%
Spread D - Prepare right-of-way	In Progress	2.37%
Spread D - Trenching	Not Started	0%
Spread D - Stringing	Not Started	0%
Spread D - Welding	Not Started	0%
Spread D - Coating & Wrapping	Not Started	0%
Spread D - Backfilling & Tying-in	Not Started	0%
Spread D - Internal Cleaning	Not Started	0%
Spread D - Final Restoration	Not Started	0%

Spread E

Spread E - Tree Felling	In Progress	98.38%
Spread E - Clearing	Not Started	0%
Spread E - Prepare right-of-way	Not Started	0%
Spread E - Trenching	Not Started	0%

Appendix A Construction Status

Activity Name	Activity Status	% Complete
Spread E - Stringing	Not Started	0%
Spread E - Welding	Not Started	0%
Spread E - Coating & Wrapping	Not Started	0%
Spread E - Backfilling & Tying-in	Not Started	0%
Spread E - Internal Cleaning	Not Started	0%
Spread E - Final Restoration	Not Started	0%
Spread F		
Spread F - Tree Felling	In Progress	81.36%
Spread F - Clearing	In Progress	27.17%
Spread F - Prepare right-of-way	In Progress	7.96%
Spread F - Trenching	Not Started	0%
Spread F - Stringing	Not Started	0%
Spread F - Welding	Not Started	0%
Spread F - Coating & Wrapping	Not Started	0%
Spread F - Backfilling & Tying-in	Not Started	0%
Spread F - Internal Cleaning	Not Started	0%
Spread F - Final Restoration	Not Started	0%
Spread G		
Spread G - Tree Felling	In Progress	95.38%
Spread G - Clearing	In Progress	5.59%
Spread G - Prepare right-of-way	In Progress	3.06%
Spread G - Trenching	Not Started	0%
Spread G - Stringing	Not Started	0%
Spread G - Welding	Not Started	0%
Spread G - Coating & Wrapping	Not Started	0%
Spread G - Backfilling & Tying-in	Not Started	0%
Spread G - Internal Cleaning	Not Started	0%
Spread G - Final Restoration	Not Started	0%
Spread H		
Spread H - Tree Felling	In Progress	68.19%
Spread H - Clearing	In Progress	11.48%
Spread H - Prepare right-of-way	In Progress	0.87%
Spread H - Trenching	Not Started	0%
Spread H - Stringing	Not Started	0%
Spread H - Welding	Not Started	0%
Spread H - Coating & Wrapping	Not Started	0%
Spread H - Backfilling & Tying-in	Not Started	0%
Spread H - Internal Cleaning	Not Started	0%
Spread H - Final Restoration	Not Started	0%
Spread I		
Spread I - Tree Felling	In Progress	99%
Spread I - Clearing	Not Started	0%
Spread I - Prepare right-of-way	Not Started	0%
Spread I - Trenching	Not Started	0%
Spread I - Stringing	Not Started	0%
Spread I - Welding	Not Started	0%
Spread I - Coating & Wrapping	Not Started	0%
Spread I - Backfilling & Tying-in	Not Started	0%
Spread I - Internal Cleaning	Not Started	0%
Spread I - Final Restoration	Not Started	0%



Appendix A Construction Status

Docket No. CP16-10-000
Weekly Report No. 28
Report Period: 05/05/18 - 05/11/18

Activity Name	Activity Status	% Complete
---------------	-----------------	------------

Contractor Yards

West Virginia Locations

MVP-LY-024	Not Started	0%
MVP-RD-001A	Not Started	0%
MVP-RD-001B	Not Started	0%
MVP-LY-001	Completed	100%
MVP-LY-003	Completed	100%
MVP-LY-013	Completed	100%
MVP-LY-017	In Progress	95%
MVP-AP-001	Not Started	0%
MVP-LOG-001	Not Started	0%
MVP-SA-001	Not Started	0%
MVP-AP-002	Not Started	0%
MVP-LY-001A	Completed	100%
MVP-LY-021	Completed	100%
MVP-LY-004	Completed	100%
MVP-LY-005	Completed	100%
MVP-LY-022	In Progress	80%
MVP-LY-025	Not Started	0%
MVP-LY-030	In Progress	90%
MVP-LY-050	In Progress	55%
MVP-LY-016	Not Started	0%
MVP-LY-037	Not Started	0%
MVP-CY-002	Not Started	0%
MVP-CY-002A	Not Started	0%
MVP-LY-027	In Progress	80%
MVP-LY-051	In Progress	90%
MVP-LY-051	In Progress	90%

Virginia Locations

MVP-PY-006	Not Started	0%
MVP-LY-032	Completed	100%
MVP-LY-033	Completed	100%
MVP-LY-034	Completed	100%
MVP-LY-035	Not Started	0%
MVP-LY-026	In Progress	90%
MVP-LY-028	In Progress	85%
MVP-LY-1019	In Progress	75%

APPENDIX B

ENVIRONMENTAL COMPLIANCE

The following table summarizes problem area reports (PAR) and noncompliance reports (NCR) issued for the Project during the reporting period, as well as corrective actions taken to resolve the issue (including the cost and effectiveness of the corrective actions).

Compliance	Spread	Location	Description and Date	Correction and Date
NCR	Bradshaw CS	N/A	5/11/2018 - Brown water flowing over silt fence however did not cause erosion or washout.	5/12/2108 - Silt was removed from fence and due to little dry weather water was evaporated and filtered through fence, no erosion noted and all ECDs in functional condition.
FERC Communication	Stallworth CS	N/A	5/8/2018 - Sediment overtopped Compost Filter Sock in multiple locations due to large storms.	5/8/2108 - Cleaned compost filter socks around site as needed and upgraded sock that was overtopped.
PAR	B	2573+65	3/14/2018 - Hanger 3, hanging outside of LOD	Pending - Will be moved in LOD during mechanical clearing.
PAR	B	2592+00	3/15/2018 – Tree rolled out of the LOD. Crews will be able to retrieve from inside the LOD. No off ROW disturbance.	Pending - Will be moved in LOD during mechanical clearing.

Compliance	Spread	Location	Description and Date	Correction and Date
PAR	B	2594+00	3/15/2018 - Tree rolled out of the LOD. Crews will be able to retrieve from inside the LOD. No off ROW disturbance.	Pending - Will be moved in LOD during mechanical clearing.
PAR	B	2608+00	3/15/2018 - Tree rolled out of the LOD leaving the butt inside the ROW. Crews s-hooked the tree and will be able to retrieve from inside the LOD. No off ROW disturbance.	Pending - Will be moved in LOD during mechanical clearing.
PAR	B	2641+00	3/15/2018 - Tree rolled out of the LOD on steep slope.	Pending - Will be moved in LOD during mechanical clearing.
PAR	B	2642+00	3/15/2018 - Tree rolled out of the LOD on steep slope.	Pending - Will be moved in LOD during mechanical clearing.
PAR	B	2583+22	3/15/2018 - Tree rolled out of the LOD. Crews will be able to retrieve from inside the LOD. No off ROW disturbance.	Pending - Will be moved in LOD during mechanical clearing.
PAR	B	2585+19	3/15/2018 - Tree rolled out of the LOD. Crews will be able to retrieve from inside the LOD. No off ROW disturbance.	Pending - Will be moved in LOD during mechanical clearing.
PAR	B	2670+15	3/16/2018 - Tree felled out of the LOD due to natural wind damage.	Pending - Will be moved in LOD during mechanical clearing.

Compliance	Spread	Location	Description and Date	Correction and Date
PAR	B	2681+00	3/16/2018 - Tree rolled out of the LOD. Crews will be able to retrieve from inside the LOD. No off ROW disturbance.	Pending - Will be moved in LOD during mechanical clearing.
PAR	B	2670+15	3/16/2018 - Tree rolled out of the LOD. Crews will be able to retrieve from inside the LOD. No off ROW disturbance.	Pending - Will be moved in LOD during mechanical clearing.
PAR	B	2659+00-2653+00	3/16/2018 - Tree rolled out of the LOD on steep side slope rock bluff.	Pending - Will be moved in LOD during mechanical clearing.
PAR	B	2659+00-2653+00	3/16/2018 - Tree rolled out of the LOD on steep slide rock bluff. Crews will be able to retrieve from inside the LOD. No off ROW disturbance.	Pending - Will be moved in LOD during mechanical clearing.
PAR	B	2636+84	3/16/2018 - Tree rolled out of the LOD. Crews will be able to retrieve from inside the LOD. No off ROW disturbance.	Pending - Will be moved in LOD during mechanical clearing.
PAR	B	2615+03	3/16/2018 - Tree hung with the top outside ROW. Crews will be able to retrieve from inside the LOD. No off ROW disturbance.	Pending - Will be moved in LOD during mechanical clearing.
PAR	B	2570+00	3/17/2018 - Tree rolled out of the LOD. Crews will be able to retrieve from inside the LOD. No off ROW disturbance.	Pending - Will be moved in LOD during mechanical clearing.

Compliance	Spread	Location	Description and Date	Correction and Date
PAR	B	2767+87	3/17/2018 - Tree rolled out of the LOD. Crews will be able to retrieve from inside the LOD. No off ROW disturbance.	Pending - Will be moved in LOD during mechanical clearing.
PAR	B	2653+00 - 2659+00	3/17/2018 - Tree rolled out of the LOD. Crews will be able to retrieve from inside the LOD. No off ROW disturbance.	Pending - Will be moved in LOD during mechanical clearing.
PAR	B	2665+00	3/17/2018 - Tree rolled out of the LOD. Crews will be able to retrieve from inside the LOD. No off ROW disturbance.	Pending - Will be moved in LOD during mechanical clearing.
PAR	B	2661+00	3/17/2018 - Tree rolled out of the LOD. Crews will be able to retrieve from inside the LOD. No off ROW disturbance.	Pending - Will be moved in LOD during mechanical clearing.
PAR	B	2597+89	3/17/2018 - Tree rolled out of the LOD. Crews will be able to retrieve from inside the LOD. No off ROW disturbance.	Pending - Will be moved in LOD during mechanical clearing.
PAR	B	2597+89	3/17/2018 - Tree rolled out of the LOD. Crews will be able to retrieve from inside the LOD. No off ROW disturbance.	Pending - Will be moved in LOD during mechanical clearing.
PAR	B	2641+00	3/17/2018 – As crew cut a tree, the limbs were caught on another tree. Limbs have been left hanging.	Pending - Will be moved in LOD during mechanical clearing.

Compliance	Spread	Location	Description and Date	Correction and Date
PAR	B	2642+00	3/17/2018 – As crew cut a tree, the limbs were caught on another tree. Limbs have been left hanging.	Pending - Will be moved in LOD during mechanical clearing.
PAR	B	2643+00	3/17/2018 – Tree top rolled out of the LOD. Too dangerous for crew to retrieve, due to safety issues.	Pending - Will be moved in LOD during mechanical clearing.
PAR	B	2644+00	3/17/2018 - Tree rolled out of the LOD. Crews will be able to retrieve from inside the LOD. No off ROW disturbance.	Pending - Will be moved in LOD during mechanical clearing.
PAR	B	2651+00	3/17/2018 – As crew cut a tree, the limbs were caught on another tree. Limbs have been left hanging.	Pending - Will be moved in LOD during mechanical clearing.
PAR	B	2666+00	3/17/2018 - Tree rolled out of the LOD. Crews will be able to retrieve from inside the LOD. No off ROW disturbance.	Pending - Will be moved in LOD during mechanical clearing.
PAR	B	2611+38	3/17/2018 – As crew cut a tree, the limbs were caught on another tree. Limbs have been left hanging.	Pending - Will be moved in LOD during mechanical clearing.
PAR	B	2614+44	3/17/2018 - Tree hung and another rolled out of the LOD. Crews will be able to retrieve from inside the LOD. No off ROW disturbance.	Pending - Will be moved in LOD during mechanical clearing.

Compliance	Spread	Location	Description and Date	Correction and Date
PAR	B	2615+03	3/17/2018 - Tree rolled out of the LOD. Crews will be able to retrieve from inside the LOD. No off ROW disturbance.	Pending - Will be moved in LOD during mechanical clearing.
PAR	B	2631+00	3/17/2018 - Tree rolled out of the LOD. Crews will be able to retrieve from inside the LOD. No off ROW disturbance.	Pending - Will be moved in LOD during mechanical clearing.
PAR	B	AWTS-804	3/19/2018 - Tree top fell out of the LOD. Crews will be able to retrieve from inside the LOD. No off ROW disturbance.	Pending - Will be moved in LOD during mechanical clearing.
PAR	B	2707+00	3/19/2018 - Tree top fell out of the LOD and a tree was hung outside of LOD. Crews will be able to retrieve from inside the LOD. No off ROW disturbance.	Pending - Will be moved in LOD during mechanical clearing.
PAR	B	2706+00	3/19/2018 - Tree top fell out of the LOD. Crews will be able to retrieve from inside the LOD. No off ROW disturbance.	Pending - Will be moved in LOD during mechanical clearing.
PAR	B	2709+07	3/19/2018 – Three tree tops and two tree hangers fell out of the LOD. Crews will be able to retrieve from inside the LOD. No off ROW disturbance.	Pending - Will be moved in LOD during mechanical clearing.

Compliance	Spread	Location	Description and Date	Correction and Date
PAR	B	2721+43	3/19/2018 - Tree top fell out of the LOD. Crews will be able to retrieve from inside the LOD. No off ROW disturbance.	Pending - Will be moved in LOD during mechanical clearing.
PAR	B	2721+25	3/19/2018 - Tree top fell out of the LOD. Crews will be able to retrieve from inside the LOD. No off ROW disturbance.	Pending - Will be moved in LOD during mechanical clearing.
PAR	B	2723+00	3/19/2018 - Tree top fell out of the LOD. Crews will be able to retrieve from inside the LOD. No off ROW disturbance.	Pending - Will be moved in LOD during mechanical clearing.
PAR	B	2762+30	3/19/2018 - Tree top fell out of the LOD. Crews will be able to retrieve from inside the LOD. No off ROW disturbance.	Pending - Will be moved in LOD during mechanical clearing.
PAR	B	2748+00	3/19/2018 - Tree rolled out of the LOD. Crews will be able to retrieve from inside the LOD. No off ROW disturbance.	Pending - Will be moved in LOD during mechanical clearing.
PAR	B	2739+00	3/19/2018 - Tree rolled out of the LOD. Crews will be able to retrieve from inside the LOD. No off ROW disturbance.	Pending - Will be moved in LOD during mechanical clearing.

Compliance	Spread	Location	Description and Date	Correction and Date
PAR	B	2726+95	3/19/2018 - Tree top fell out of the LOD. Crews will be able to retrieve from inside the LOD. No off ROW disturbance.	Pending - Will be moved in LOD during mechanical clearing.
PAR	B	2729+00	3/19/2018 - Tree top fell out of the LOD. Crews will be able to retrieve from inside the LOD. No off ROW disturbance.	Pending - Will be moved in LOD during mechanical clearing.
PAR	B	2728+90	3/19/2018 - Tree top fell out of the LOD. Crews will be able to retrieve from inside the LOD. No off ROW disturbance.	Pending - Will be moved in LOD during mechanical clearing.
PAR	B	2749+80	3/19/2018 - Tree top fell out of the LOD. Crews will be able to retrieve from inside the LOD. No off ROW disturbance.	Pending - Will be moved in LOD during mechanical clearing.
PAR	B	2726+78	3/19/2018 - Tree top fell out of the LOD. Crews will be able to retrieve from inside the LOD. No off ROW disturbance.	Pending - Will be moved in LOD during mechanical clearing.
PAR	B	2737+00	3/19/2018 - Tree top fell out of the LOD. Crews will be able to retrieve from inside the LOD. No off ROW disturbance.	Pending - Will be moved in LOD during mechanical clearing.

Compliance	Spread	Location	Description and Date	Correction and Date
PAR	B	2778+00	3/19/2018 - Tree top fell out of the LOD. Crews will be able to retrieve from inside the LOD. No off ROW disturbance.	Pending - Will be moved in LOD during mechanical clearing.
PAR	B	2730+00	3/19/2018 - Tree top fell out of the LOD. Crews will be able to retrieve from inside the LOD. No off ROW disturbance.	Pending - Will be moved in LOD during mechanical clearing.
PAR	B	2728+74	3/19/2018 - Tree butt rolled out of the LOD. Crews will be able to retrieve from inside the LOD. No off ROW disturbance.	Pending - Will be moved in LOD during mechanical clearing.
PAR	B	ATWS-078	3/20/2018 - Tree top fell out of the LOD. Crews will be able to retrieve from inside the LOD. No off ROW disturbance.	Pending - Will be moved in LOD during mechanical clearing.
PAR	B	2728+67	3/20/2018 - Tree top fell out of the LOD. Crews will be able to retrieve from inside the LOD. No off ROW disturbance.	Pending - Will be moved in LOD during mechanical clearing.
PAR	B	2726+75	3/20/2018 - Tree rolled out of the LOD. Crews will be able to retrieve from inside the LOD. No off ROW disturbance.	Pending - Will be moved in LOD during mechanical clearing.

Compliance	Spread	Location	Description and Date	Correction and Date
PAR	B	2734+00	3/20/2018 - Tree top fell out of the LOD. Crews will be able to retrieve from inside the LOD. No off ROW disturbance.	Pending - Will be moved in LOD during mechanical clearing.
PAR	B	2762+00	3/20/2018 - Tree top fell out of the LOD. Crews will be able to retrieve from inside the LOD. No off ROW disturbance.	Pending - Will be moved in LOD during mechanical clearing.
PAR	B	2713+00	3/20/2018 - Tree top fell out of the LOD. Crews will be able to retrieve from inside the LOD. No off ROW disturbance.	Pending - Will be moved in LOD during mechanical clearing.
PAR	B	2714+00	3/20/2018 - Tree top fell out of the LOD. Crews will be able to retrieve from inside the LOD. No off ROW disturbance.	Pending - Will be moved in LOD during mechanical clearing.
PAR	B	2715+00	3/20/2018 - Tree top fell out of the LOD. Crews will be able to retrieve from inside the LOD. No off ROW disturbance.	Pending - Will be moved in LOD during mechanical clearing.
PAR	B	2716+00	3/20/2018 - Tree rolled out of the LOD and a tree top also fell out of the LOD. Crews will be able to retrieve from inside the LOD. No off ROW disturbance.	Pending - Will be moved in LOD during mechanical clearing.

Compliance	Spread	Location	Description and Date	Correction and Date
PAR	B	2717+00	3/20/2018 - Tree rolled out of the LOD. Crews will be able to retrieve from inside the LOD. No off ROW disturbance.	Pending - Will be moved in LOD during mechanical clearing.
PAR	B	2717+98	3/20/2018 - Tree top fell out of the LOD. Crews will be able to retrieve from inside the LOD. No off ROW disturbance.	Pending - Will be moved in LOD during mechanical clearing.
PAR	B	2720+00	3/20/2018 - Tree top fell out of the LOD. Crews will be able to retrieve from inside the LOD. No off ROW disturbance.	Pending - Will be moved in LOD during mechanical clearing.
PAR	B	2775+80	3/22/2018 - Tree hangers out of the LOD. Crews will be able to retrieve from inside the LOD. No off ROW disturbance.	Pending - Will be moved in LOD during mechanical clearing.
PAR	B	2774+60	3/22/2018 - Tree top fell out of the LOD. Crews will be able to retrieve from inside the LOD. No off ROW disturbance.	Pending - Will be moved in LOD during mechanical clearing.
PAR	B	2778+00	3/22/2018 - Tree top fell out of the LOD. Crews will be able to retrieve from inside the LOD. No off ROW disturbance.	Pending - Will be moved in LOD during mechanical clearing.

Compliance	Spread	Location	Description and Date	Correction and Date
PAR	B	2779+00	3/22/2018 - Tree top fell out of the LOD. Crews will be able to retrieve from inside the LOD. No off ROW disturbance.	Pending - Will be moved in LOD during mechanical clearing.
PAR	B	2788+25	3/22/2018 - Tree rolled out of the LOD. Crews will be able to retrieve from inside the LOD. No off ROW disturbance.	Pending - Will be moved in LOD during mechanical clearing.
PAR	B	2783+00	3/22/2018 - Tree top fell out of the LOD. Crews will be able to retrieve from inside the LOD. No off ROW disturbance.	Pending - Will be moved in LOD during mechanical clearing.
PAR	B	2780+40	3/22/2018 - Tree rolled out of the LOD. Crews will be able to retrieve from inside the LOD. No off ROW disturbance.	Pending - Will be moved in LOD during mechanical clearing.
PAR	B	2782+00	3/22/2018 - Tree rolled out of the LOD. Crews will be able to retrieve from inside the LOD. No off ROW disturbance.	Pending - Will be moved in LOD during mechanical clearing.
PAR	B	2781+00	3/22/2018 – One tee top fell out of the LOD and one tree rolled out of LOD. Crews will be able to retrieve from inside the LOD. No off ROW disturbance.	Pending - Will be moved in LOD during mechanical clearing.

Compliance	Spread	Location	Description and Date	Correction and Date
PAR	B	2792+90	3/22/2018 - Tree top fell out of the LOD. Crews will be able to retrieve from inside the LOD. No off ROW disturbance.	Pending - Will be moved in LOD during mechanical clearing.
PAR	B	ATWS-478	3/22/2018 – Tree butt fell outside of the LOD. Crews will be able to retrieve from inside the LOD. No off ROW disturbance.	Pending - Will be moved in LOD during mechanical clearing.
PAR	B	2726+00	3/22/2018 - Tree fell out of the LOD. Crews will be able to retrieve from inside the LOD. No off ROW disturbance.	Pending - Will be moved in LOD during mechanical clearing.
PAR	B	2726+95	3/22/2018 - Tree top fell out of the LOD. Crews will be able to retrieve from inside the LOD. No off ROW disturbance.	Pending - Will be moved in LOD during mechanical clearing.
PAR	B	2724+11	3/22/2018 - Tree top fell out of the LOD. Crews will be able to retrieve from inside the LOD. No off ROW disturbance.	Pending - Will be moved in LOD during mechanical clearing.
PAR	B	2728+00	3/22/2018 - Tree top fell out of the LOD. Crews will be able to retrieve from inside the LOD. No off ROW disturbance.	Pending - Will be moved in LOD during mechanical clearing.

Compliance	Spread	Location	Description and Date	Correction and Date
PAR	B	2724+11	3/22/2018 - Tree butt fell out of the LOD. Crews will be able to retrieve from inside the LOD. No off ROW disturbance.	Pending - Will be moved in LOD during mechanical clearing.
PAR	B	2725+50	3/22/2018 - Tree butt fell out of the LOD. Crews will be able to retrieve from inside the LOD. No off ROW disturbance.	Pending - Will be moved in LOD during mechanical clearing.
PAR	B	2725+00	3/22/2018 - Tree rolled out of the LOD. Crews will be able to retrieve from inside the LOD. No off ROW disturbance.	Pending - Will be moved in LOD during mechanical clearing.
PAR	B	2728+67	3/22/2018 - Tree top fell out of the LOD, two tree butts rolled out of the LOD. Crews will be able to retrieve from inside the LOD. No off ROW disturbance.	Pending - Will be moved in LOD during mechanical clearing.
PAR	B	2733+00	3/22/2018 - Tree top fell out of the LOD. Crews will be able to retrieve from inside the LOD. No off ROW disturbance.	Pending - Will be moved in LOD during mechanical clearing.
PAR	B	2759+00	3/22/2018 - Tree rolled out of the LOD. Crews will be able to retrieve from inside the LOD. No off ROW disturbance.	Pending - Will be moved in LOD during mechanical clearing.

Compliance	Spread	Location	Description and Date	Correction and Date
PAR	B	2760+03	3/22/2018 - Tree top fell out of the LOD. Crews will be able to retrieve from inside the LOD. No off ROW disturbance.	Pending - Will be moved in LOD during mechanical clearing.
PAR	B	2731+00	3/22/2018 - Tree top fell out of the LOD. Crews will be able to retrieve from inside the LOD. No off ROW disturbance.	Pending - Will be moved in LOD during mechanical clearing.
PAR	B	2733+00	3/22/2018 - Tree top fell out of the LOD. Crews will be able to retrieve from inside the LOD. No off ROW disturbance.	Pending - Will be moved in LOD during mechanical clearing.
PAR	B	2729+53	3/22/2018 - Tree limbs fell out of the LOD. Crews will be able to retrieve from inside the LOD. No off ROW disturbance.	Pending - Will be moved in LOD during mechanical clearing.
PAR	B	2729+00	3/22/2018 - Tree top fell out of the LOD. Crews will be able to retrieve from inside the LOD. No off ROW disturbance.	Pending - Will be moved in LOD during mechanical clearing.
PAR	B	2758+49	3/22/2018 - Tree top fell out of the LOD. One tree rolled out of the LOD. Crews will be able to retrieve from inside the LOD. No off ROW disturbance.	Pending - Will be moved in LOD during mechanical clearing.

Compliance	Spread	Location	Description and Date	Correction and Date
PAR	B	2758+00	3/22/2018 - Tree rolled out of the LOD. Crews will be able to retrieve from inside the LOD. No off ROW disturbance.	Pending - Will be moved in LOD during mechanical clearing.
PAR	B	2740+00	3/23/2018 - Tree top fell out of the LOD. Crews will be able to retrieve from inside the LOD. No off ROW disturbance.	Pending - Will be moved in LOD during mechanical clearing.
PAR	B	2754+00	3/23/2018 - Tree top fell out of the LOD. Crews will be able to retrieve from inside the LOD. No off ROW disturbance.	Pending - Will be moved in LOD during mechanical clearing.
PAR	B	2751+00	3/23/2018 - Tree top fell out of the LOD. Crews will be able to retrieve from inside the LOD. No off ROW disturbance.	Pending - Will be moved in LOD during mechanical clearing.
PAR	B	2756+00	3/23/2018 – Two tree tops and one tree rolled out of the LOD. Crews will be able to retrieve from inside the LOD. No off ROW disturbance.	Pending - Will be moved in LOD during mechanical clearing.
PAR	B	2755+33	3/23/2018 - Tree top fell out of the LOD. Crews will be able to retrieve from inside the LOD. No off ROW disturbance.	Pending - Will be moved in LOD during mechanical clearing.

Compliance	Spread	Location	Description and Date	Correction and Date
PAR	B	2755+54	3/23/2018 - Tree rolled out of the LOD. Not accessible from LOD.	Pending - Will be moved in LOD during mechanical clearing.
PAR	B	2754+00	3/23/2018 – One tree and one tree butt rolled out of the LOD. Not accessible from LOD.	Pending - Will be moved in LOD during mechanical clearing.
PAR	B	2753+00	3/23/2018 - Tree top fell out of the LOD. Crews will be able to retrieve from inside the LOD. No off ROW disturbance.	Pending - Will be moved in LOD during mechanical clearing.
PAR	B	2752+00	3/23/2018 - Tree top fell out of the LOD. Crews will be able to retrieve from inside the LOD. No off ROW disturbance.	Pending - Will be moved in LOD during mechanical clearing.
PAR	B	2751+00	3/23/2018 - Tree rolled out of the LOD. Crews will be able to retrieve from inside the LOD. No off ROW disturbance.	Pending - Will be moved in LOD during mechanical clearing.
PAR	B	2841+00	3/23/2018 – Three tree tops and one hanger fell out of the LOD. Crews will be able to retrieve from inside the LOD. No off ROW disturbance.	Pending - Will be moved in LOD during mechanical clearing.
PAR	B	2836+00	3/23/2018 - Tree top fell out of the LOD. Crews will be able to retrieve from inside the LOD. No off ROW disturbance.	Pending - Will be moved in LOD during mechanical clearing.

Compliance	Spread	Location	Description and Date	Correction and Date
PAR	B	2836+72	3/23/2018 - Tree top fell out of the LOD. Crews will be able to retrieve from inside the LOD. No off ROW disturbance.	Pending - Will be moved in LOD during mechanical clearing.
PAR	B	2832+00	3/23/2018 - Tree top fell out of the LOD. Crews will be able to retrieve from inside the LOD. No off ROW disturbance.	Pending - Will be moved in LOD during mechanical clearing.
PAR	B	2833+00	3/23/2018 - Tree top fell out of the LOD. Crews will be able to retrieve from inside the LOD. No off ROW disturbance.	Pending - Will be moved in LOD during mechanical clearing.
PAR	B	2834+00	3/23/2018 - Tree top fell out of the LOD. Crews will be able to retrieve from inside the LOD. No off ROW disturbance.	Pending - Will be moved in LOD during mechanical clearing.
FERC Communication Report	B	2844+00	3/24/2018 - Tree top fell out of the LOD. Crews will be able to retrieve from inside the LOD. No off ROW disturbance.	Pending - Will be moved in LOD during mechanical clearing.
FERC Communication Report	B	2845+00	3/24/2018 - Tree top fell out of the LOD. Crews will be able to retrieve from inside the LOD. No off ROW disturbance.	Pending - Will be moved in LOD during mechanical clearing.

Compliance	Spread	Location	Description and Date	Correction and Date
FERC Communication Report	B	2835+41	3/24/2018 - Tree top fell out of the LOD. Crews will be able to retrieve from inside the LOD. No off ROW disturbance.	Pending - Will be moved in LOD during mechanical clearing.
FERC Communication Report	B	2836+00	3/24/2018 - Tree top fell out of the LOD. Crews will be able to retrieve from inside the LOD. No off ROW disturbance.	Pending - Will be moved in LOD during mechanical clearing.
FERC Communication Report	B	2838+00	3/24/2018 - Tree top fell out of the LOD. Crews will be able to retrieve from inside the LOD. No off ROW disturbance.	Pending - Will be moved in LOD during mechanical clearing.
FERC Communication Report	B	2904+00	3/24/2018 - Tree top fell out of the LOD. Crews will be able to retrieve from inside the LOD. No off ROW disturbance.	Pending - Will be moved in LOD during mechanical clearing.
FERC Communication Report	B	2903+48	3/24/2018 - Tree top fell out of the LOD. Crews will be able to retrieve from inside the LOD. No off ROW disturbance.	Pending - Will be moved in LOD during mechanical clearing.
FERC Communication Report	B	2908+00	3/24/2018 - Tree butt rolled out of the LOD.	Pending - Will be moved in LOD during mechanical clearing.
NCR (self report)	B	2868+00	3/29/18 - Two trees were cut outside the LOD	Pending - Will be moved in LOD during mechanical clearing.

Compliance	Spread	Location	Description and Date	Correction and Date
FERC Communication Report	B	2872+00	3/29/18 - Tree butt fell out of the LOD.	Pending - Will be moved in LOD during mechanical clearing.
FERC Communication Report	B	2874+00	3/29/18 - Tree butt fell out of the LOD.	Pending - Will be moved in LOD during mechanical clearing.
FERC Communication Report	B	2877+51	3/29/18 - Tree top rolled out of the LOD.	Pending - Will be moved in LOD during mechanical clearing.
FERC Communication Report	B	2898+00	3/26/18 - Tree butt fell out of the LOD.	Pending - Will be moved in LOD during mechanical clearing.
PAR	D	6301+00	4/3/18 - Tree fell off LOD. No ground disturbance off ROW. Can be moved back onto ROW with equipment.	Pending- Will be moved onto ROW during mechanical process.
PAR	D	6130+00	4/4/18 - Tree fell off LOD. No ground disturbance off ROW. Can be moved back onto ROW with equipment.	Pending- Will be moved onto ROW during mechanical process.
PAR	D	6469+25	4/4/18 - Tree fell off LOD. No ground disturbance off ROW. Can be moved back onto ROW with equipment.	Pending- Will be moved onto ROW during mechanical process.

Compliance	Spread	Location	Description and Date	Correction and Date
PAR	D	6432+50	4/4/18 - Tree fell off LOD. No ground disturbance off ROW. Can be moved back onto ROW with equipment.	Pending- Will be moved onto ROW during mechanical process.
PAR	D	6457+20	4/4/18 - Tree fell off LOD. No ground disturbance off ROW. Can be moved back onto ROW with equipment.	Pending- Will be moved onto ROW during mechanical process.
PAR	D	6249+00	4/6/18 - Tree fell off LOD. No ground disturbance off ROW. Can be moved back onto ROW with equipment.	Pending- Will be moved onto ROW during mechanical process.
FERC Communication Report	E	6829+00	5/5/2018 - Tree was cut and fell off the LOD.	Pending - Discussed safety hazards when tree cutting on 5/5/2018. Will be moved onto ROW during mechanical process.
NCR	E	6853+62	4/21/2018 – Tree cut half in and half outside of LOD.	Pending - Notified Land, MVP Office and FERC Monitor. Will be moved onto ROW during mechanical process.
NCR	E	6853+77	4/21/2018 – 9" tree cut 15" outside of LOD	Pending – Notified Land, MVP Office and FERC Monitor. Will be moved onto ROW during mechanical process.
NCR	E	6854+05	4/21/2018 – 4" tree cut 6" outside of LOD	Pending – Notified Land, MVP Office and FERC Monitor. Will be moved onto ROW during mechanical process.
FERC Communication Report	E	6968+00	4/30/18 - 24" diameter double heart tree fell off ROW	Pending – Discussed double hearted trees on 4/30/18. Will be moved onto ROW during mechanical process.

Compliance	Spread	Location	Description and Date	Correction and Date
FERC Communication Report	E	7018+20	4/30/18 -Wedge tree; when fell it rolled off ROW	Pending - Reviewed wedging procedures on 4/30/18. Will be moved onto ROW during mechanical process.
FERC Communication Report	E	7359+60	4/20/2018 – Tree fell outside of the LOD.	Pending- Notified land agent and FERC monitor. Will be moved onto ROW during mechanical process.
FERC Communication Report	E	7508+92	4/20/2018 – Tree fell outside of the LOD.	Pending- Notified land agent and FERC monitor. Will be moved onto ROW during mechanical process.
FERC Communication Report	E	7938+00	4/28/2018 - Cut tree (30") and fell off ROW after wedging failure/wind	Pending – Crew discussed wind gust and additional measures to aid in being aware of the wind changes on 4/28/18. Also, reviewed the process of wedging. Will be moved onto ROW during mechanical process.
FERC Communication	E	7938+08	5/10/2018 - 14" dead tree 12' tall rolled off the LOD when it hit the ground.	Pending - Went over distance to stay away from tree cutting and the dangers of steep grades and rolling trees on 5/10/2018. Will be moved onto ROW during mechanical process.
FERC Communication	E	7938+90	5/10/2018 - 20" tree 10' off LOD when cut	Pending - Went over tree felling procedures and LOD location markers on 5/10/2018. Will be moved onto ROW during mechanical process.
FERC Communication Report	E	8070+00	5/1 /18- Hill very steep and 8" tree rolled off the ROW	Pending - Reviewed dangers as well as procedures for hand felling on steep grades on 5/1/18. Will be moved onto ROW during mechanical process.

Compliance	Spread	Location	Description and Date	Correction and Date
FERC Communication Report	E	8081+13	5/4 /18- 18" tree was a high risk tree. As it was being pulled with robe it broke in two.	Pending – Reviewed roping high risk tree procedures and had a safety talk on 5/4/18. Will be moved onto ROW during mechanical process.
FERC Communication Report	E	8085+00	5/1/18- Hill very steep and 8" tree rolled off the ROW. JP calling Jeff to see about mechanical in the area.	Pending - Reviewed dangers as well as procedures for hand felling on steep grades on 5/1/18. Will be moved onto ROW during mechanical process.
FERC Communication	E	8124+55	5/11/2018 - 13" tree top off LOD before sawyers approached Once base was cut the top still remained off LOD 30' The tree is located off Cold Hollow Road on the south side of the LOD.	Pending - Reviewed location of tree top and dangers of hanging trees becoming widow makers as well as "sweeping" areas for dangers prior to cutting and walking the LOD on 5/11/2018. Will be moved onto ROW during mechanical process.
FERC Communication	E	8156+00	5/10/2018 - Wind picked up the 11" tree 30' long when it was cut.	Discussed safety hazards when winds gust come and monitoring winds speeds on 5/10/2018. Will be moved onto ROW during mechanical process.
FERC Communication	E	ATWS-273A	5/52018 - 18" Tree broke and pulled off the ROW off ATWS 273-A	Discussed the dangers of a tree splitting/breaking when cut on 5/5/2018. Will be moved onto ROW during mechanical process.
PAR	F	MP 177-191 Bat Area	A total of 567 trees rolled out of LOD. From beginning of hand felling on 2/27 until 4/1.	Pending - Contacted all land owners and began removing trees during clearing. No ground disturbance off ROW. Remaining trees will be moved onto ROW and cleared during mechanical process.

Compliance	Spread	Location	Description and Date	Correction and Date
NCR	F	9460+00	5/8/2018 - Subsoil and topsoil mixing.	5/9/2018 - Segregated topsoil and subsoil.
NCR	F	9461+00	5/8/2018 - No ECD'S in areas where sediment has left the LOD.	5/9/2018 - Installed ECD'S.
PAR	F	9467+87 to 9498+13	5/8/2018 - Waterbars failed, sumps overfilled and sediment went off LOD.	5/9/2018 - Rebuilt waterbars, cleaned out sumps and retrieved sediment back onto LOD.
PAR	JNF	Pocahontas Road and Mystery Ridge Road	5/6/2018 - Sediment has collected in front of CFS and silt fence J-hooks along Pocahontas Road and Mystery Ridge Road as result of 2.5" rain event that ended on 05/06/18. Temporary slope breakers need maintenance as well.	5/9/2018 - Sediment has been removed from ECDs and maintenance needs at temporary slope breakers has been completed. Additional controls were added where needed by 05/09/18. All disturbed areas have been stabilized with seed and straw.
Note: PAR – Problem Area Report; NCR – Noncompliance Report.				

APPENDIX C

AGENCY CORRESPONDENCE AND RESPONSES

Bradshaw and Mobley Compressor Sites

On April 25, 2018, MVP Environmental Coordinator Matthew Hoover received a Notice of Violation (NOV) from the West Virginia Department of Environmental Protection (WVDEP). The NOV is associated with the partial inspection completed on April 3, 2018 at the Mobley substation, Bradshaw substation, and the cleared ROW between the two substations. Mountain Valley included a copy of the NOV in its prior weekly report. A copy of Mountain Valley's response letter to the WVDEP is included in Appendix C.



May 10, 2018

Mr. Ryan Dague
West Virginia Department of Environmental Protection
Environmental Enforcement/WW
131 Peninsula St
Wheeling, WV 25304

**Re: Mountain Valley Pipeline Project (Permit No. WVR310667)
Response to Notice of Violation No. W18-52-021-RDD**

Dear Mr. Dague:

This letter is in response to Notice of Violation (NOV) No. W18-52-021-RDD issued to Mountain Valley Pipeline, LLC (Mountain Valley or MVP) by the West Virginia Department of Environmental Protection (WVDEP) for the Bradshaw Compressor Station and Mobley Interconnect locations in Wetzel County on April 25, 2018.

Prior to earth disturbance, all temporary erosion and sediment control devices were installed on these locations. During WVDEP's April 3, 2018 inspection, it was determined that the area received approximately 1.09-inches of rain. In addition, the project area received over 4 inches of precipitation in the week preceding the inspection. Based on the inspection, the issued NOV notified Mountain Valley of alleged issues with erosion and sediment control devices. Mountain Valley investigated accordingly and conducted the following corrective actions (photos located in Attachment A) to address and abate any alleged issues within NOV No. W18-52-021-RDD:

Corrective Actions

- Immediately following the inspection, additional stakes were installed along the compromised sections of triple stocked compost filter sock (CFS), which increased the ground surface contact and improved the CFS/ground contact. Additional layers of CFS and secondary BMPs were also installed throughout the project area. Rock check dams have been installed and additional diversion berms were installed along the access road to divert concentrated flows. These corrective actions will prevent sediment laden water from leaving the location.
- The drop inlet has been properly fitted and additional rock has been placed around the inlet, providing additional sediment filtration and proper inlet protection. Additional staples have been installed in the erosion control matting (ECM) upslope of the drop outlet to increase ground contact. The addition of rock and securing the ECM will reduce potential erosion and provide increased filtration before entering the drop outlet.
- Additional rock check dams have been installed along the access roads and areas where channelized flow was impacting the fill slopes. Perimeter controls have been cleaned, replaced where necessary, and maintained throughout the project area to protect fill slopes.

Mr. Ryan Dague

May 10, 2018

Page 2 of 2

- In addition to the corrective actions described above, and to the already required inspections, Mountain Valley increased inspections to occur every four days during the month of April. Additional environmental crews were also hired to help maintain, repair, and replaced the BMPs throughout the project area.

Mountain Valley believes that the issues listed in the NOV have been fully addressed and resolved. If you have questions or need additional information, please do not hesitate to contact me at (724) 873-3009 or via email at mhooover@eqt.com.

Sincerely,



Matthew S. Hoover
EQT - Sr. Environmental Coordinator

CC: Project File

Attachment A
Corrective Action Photos



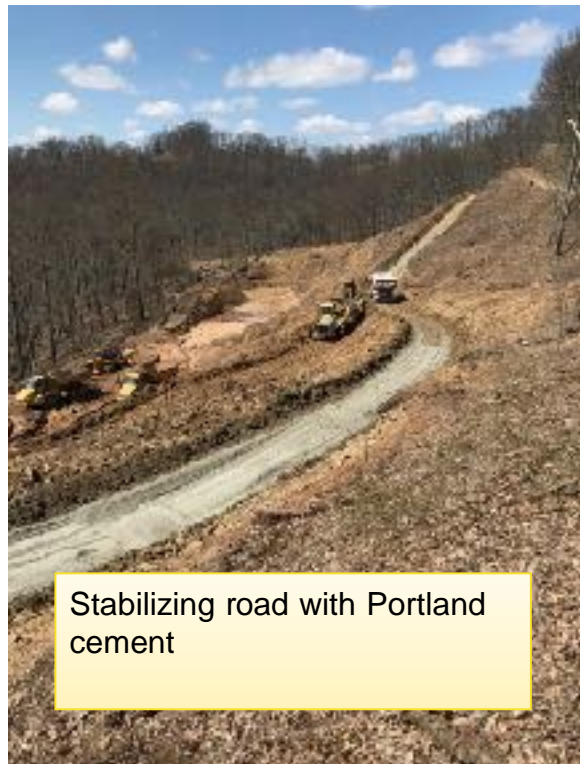
Adjusting Compost Filter Sock and securing with new stakes.



Adjusting Compost Filter Sock and securing with new stakes.



Rock filter and Priority 2 fencing below broad base dip



Stabilizing road with Portland cement



Broad Base Dip on newly stabilized road



Replaced and redesigned priority 1 silt fence and added 12" culvert with stone inlet protection



Stabilizing road bank and fence replacement



Adding additional stakes to triple CFS



Repairing CFS and priority 1 silt fence at Mobley IC



Added smaller stone to stabilize existing riprap/erosion fabric



Stabilized road at Mobley IC



Added gravel filter to end of French drain

APPENDIX D
LANDOWNER CONCERNS

The following table includes information regarding landowner concerns and how they were resolved.

Tract ID	Spread / Facility	Station/ MP	Date of Concern	Date of Resolution	Issue and Resolution
WV-HA-014	Spread A	11.2	3/10/2018	Pending	<p>Issue: L/O called agent and expressed concerns for a tree that was cut down on his property by the tree cutting crew. The L/O claims that it was supposed to be protected and should not have been cut. They will not allow for further activity on their property until the matter is resolved. Appropriate parties contacted and told to halt any activities on WV-HA-014 until the complaint is resolved. The agent reviewed the ROW LOW and Landrun entries and found no reference of the tree and did not recall ever having discussed it with the L/Os.</p> <p>Resolution:</p> <ul style="list-style-type: none"> • 3/11/2018 - The agent called the L/O. They stated that during the initial negotiation for the ROW they requested that the spring and tree stay protected. The agent told him this was the first he had heard anything about the tree and that nothing was included in the ROW documents referencing protection of the tree. The agent told them he will discuss with MVP management and get back to them with the results. • 3/22/2018 - L/O said they want a couple more days to consider what they think will be a fair resolution. L/O said he asked an Arborist to inspect the tree and wants to get his opinion before they discuss any offer for the tree. • 4/5/2018 - Land agent called the L/O back regarding the issue, but he did not answer. Still waiting for him to call back.

WV-HA-014	Spread A	11.2	3/10/2018	Pending	<ul style="list-style-type: none"> • 4/13/2018 - Agent is continuing to try to reach L/O to discuss the situation. • 4/18/2018 - Agent received a call from L/O's son. It was explained to him that we have not gotten a response regarding any proposed resolution to the tree cutting incident. Agent asked son if he would talk to his mother regarding her input and call back. He said he will do so. Agent stressed that we want to resolve the issue to everyone's satisfaction so construction can resume. • 4/27/2018 - Agent has tried to get in contact with L/O but still has not been successful. • 5/3/2018- Agent called L/O and left message notifying him that tree cutting crew will be on property the following day and will be accompanied by security. Asked L/O to call back to discuss tree settlement. L/O called back to state that the tree is worth \$20,000 and is upset the tree cutting crew showed up when the tree issue is not resolved. He stated no one will enter the property until this issue is resolved. • 5/7/2018- The land agent called the L/O asking if someone from EQT could inspect the tree. They declined permission to the property until the issue is settled and payment is received. • 5/8/2018- The agent spoke to the L/O about signing damage release documents, as approval was given to settle. The L/O acknowledged upon receipt of payment, work can resume.
WV-BR-002	Spread C	66	5/11/2018	Pending	<ul style="list-style-type: none"> • Issue: Landowner claims timber was cut outside the LOD. Resolution: Agent is verifying claim.

WV-MO-012.040	Spread F	179	3/19/2018	Pending	<p>Issue: Tenant to L/O expressed concerns over pasture and two horses located on the property free of charge. The easement was negotiated with the L/O and at the direction of the L/O, provisions were made in the LOW for construction to provide for the safety of the horses.</p> <p>Resolution:</p> <ul style="list-style-type: none"> • 3/19/2018 – L/O stated that they would provide the water if MVP would provide the trough and the hose. These were two concerns that were presented to both the land agent and the L/O by the tenant. • 3/20/2018 - Land agent and Coates Project Manager made a personal visit to the tenant. Tenant objected to the idea of the hose and the trough. Tenant concerned about orange fencing and the safety of their horses. Orange fencing cannot be taken down as it is a commitment to FERC. • 3/22/2018 - At the request of a construction inspector, land agent called the L/O to discuss the care of the horses. It was determined that rather than 3 strand barb wire (which was originally requested by the L/O), 4 strand smooth wire would be placed to keep the horses safely away from construction activities. • 3/23/2018 - At the request of Coates PM, land agent went to the property where horses are pastured. The horses were not cut off from the other pasture as expressed by tenant in a recent email. Pictures were taken by the land agent on this day to show the openings and there is no evidence of any person "leading" tenant's horses to the other side. • 3/24-28/2018 - A few contacts that were uneventful and all concerns seemed to be under control. • 4/2/2018 - Coates PM dropped by and spoke to tenant and she claimed that the horses were fine. • 4/6/2018 - FERC complaint registered by tenant. FERC monitor, and Chief Inspector, and chief environmental inspector, met with land agent to discuss what has been agreed upon and to determine any other steps that may provide satisfaction for tenant. Another meeting is scheduled for 8 am, 4/10/2018 with FERC monitor, Construction PM, Chief inspector, Chief environmentalist, Coates PM and land agent for Monroe county to further discuss. Tenant has requested payment to move her horses to another property. This payment would be the cost of new electric fencing and possibly extra feed. Tenant has also requested a buyout of her property due to the stress the project has caused. Tenant has been requesting this buy-out for months before the horses were ever a factor.
---------------	----------	-----	-----------	---------	--

WV-MO-012.040	Spread F	179	3/19/2018	Pending	<ul style="list-style-type: none"> • 4/19/2018 - At tenant's request no one with MVP is to have contact with her. They will deal with FERC only. Construction and land have been in contact with the L/O and have agreed that a water buffalo will be placed in pasture and water hauling will be scheduled as needed for the horse. There will be no gap for the horse to get "confused" by as previously stated by tenant. Feed will be supplied as needed. A gate through the electric fence will be installed so that should the tenant need to get the horses to her property for shelter she will be able to do so easily. • 4/27/2018 - Tenant agreed to keep in contact with land agent and FERC about issues. • 5/4/2018 - Agent met with contractor who will supply water buffalo for horses. Agent spoke with tenant to keep them advised of time table for delivery. Land has also obtained supplemental food requirements for horses from tenant. Path to water and pasture remain open for horses at this time. MVP to also replace a solar charger for electric fence. • 5/11/2018- Chief inspector called requesting that MVP be allowed to place a jumper at the electric fence along Wayside Road so that the gap could be left open. He asked agent to call the tenant and explain the idea for approval. The tenant did give permission to do so. Orders remain the same to the crews: Do not handle the horses and do enter the tenant's property.
VA-MO-053	Spread G	226.1	5/7/2018	Pending	<ul style="list-style-type: none"> • Issue: Land agent was out with the burning crews and a spark flew off the burn pile and caught a small area off the LOD on fire. The area was roughly 35' x 75'. The agent spoke with the L/O regarding this and they are fine with this issue since it was just under growth/leaves that caught on fire. L/O wants to know how this incident is going to be handled. Resolution: The agent told the L/O they would talk to the project manager and get back to them.

VA-MO-025	Spread H	237.3	3/20/2018	Pending	<p>Issue: Survey was approached by L/O stating that the property lines were incorrect in the maps. The L/O said that the lines were off about 100' and the neighbors have not been compensated.</p> <p>Resolution: MVP is currently reviewing the property boundary information to determine if the claim is accurate.</p> <ul style="list-style-type: none"> • 4/15/2018 - Agent met with VA-MO-025 L/O along with L/Os of VA-MN-5233 and VA-RO-5805. The stakes were reviewed that the L/O was referring to and walked the route L/O preferred. These stakes were from a previous survey and do not reflect the filed route. The filed route does appear to enter VA-RO-5805 and VA-RO-5806. If the L/O's preferred route is accepted, it will require signatures from VA-MO-025 and VA-MO-023. Further discussions will proceed through both L/O's attorneys. • 4/20/2018 - MVP is currently working with the L/O to identify potential alternatives to the route in the area of concern. • 4/27/2018 - Land and construction have met with the L/O and the adjacent L/O to correct the route and are meeting with the adjacent L/O's to acquire rights. • 5/4/2018 - Still working with L/Os and reviewing alternatives. • 5/11/2018- still have an issue with the route. One neighbor has signed to fix part of the issue, but the other neighbor, documents are still in process.
VA-RO-045	Spread H	241.6	5/7/2018	Pending	<p>Issue: Cut trees are blocking L/O access road.</p> <p>Resolution: The trees need to be cleared from the access road.</p>
VA-FR-017.15	Spread H	253.9	5/8/2018	Pending	<p>Issue: The lead environmental inspector notified the land agent about a fire on this parcel on 5-04-2018. It was an area about 30'X50'. The construction workers had to leave the LOD per the Emergency Action Plan to put the fire out. 5/9/2018- Lead environmental inspector called the agent again stating that there was another fire on this parcel today. The agent said it appeared to be arson. At the time, MVP had not burned in 2 days and it had rained preventing old embers from starting the fire.</p> <p>Resolution: The Franklin County Sheriff's Department was called to investigate the possible arson claim.</p>

VA-FR-017.20	Spread H	255.2	5/8/2018	Pending	<p>Issue: The land agent met with the lead environmental inspector about a fire on this parcel on 5-04-2018. The fire was fueled by a dead stump. Due to the direction of the wind and location of the stump, it is unlikely that MVP started the fire.</p> <p>Resolution: The fire is out and authorities have been notified of the incident.</p>
VA-FR-017.42	Spread H	257.5	4/1/2018	Pending	<p>Issue: L/O called to report that the alignment varied from the agreement. They are concerned that the flagging of the ROW is off.</p> <p>Resolution: The land agent is trying to get a hold of the L/O to meet them on the property.</p> <ul style="list-style-type: none"> • 4/13/2018 - Pending an onsite meeting to review the stakes placed in the field. • 4/20/2018 - Still waiting for an update from the field visit. • 4/27/2018- Land agent is following up with this to make sure it has been addressed with the L/O. • 5/4/2018- Agent met with L/O who wanted to see if some of the trees on the ridge top could be saved. L/O also stated that every time the property is surveyed, the stakes move. Agent called to have the area resurveyed to see if any large trees could be saved. • 5/7/2018- Survey stated trees in question would need cut down. Agent notified L/O about this.
VA-FR-151	Spread I	274.2	4/30/2018	Pending	<p>Issue: Tree clearing crew called the agent about a tree falling off the LOD and asked agent to contact the L/O.</p> <p>Resolution: The agent called the L/O and they stated that they wanted the tree cut up and moved back onto the LOD.</p> <p>5/11/2018 - Still in discussion.</p>
VA-FR-162.01	Spread I	277.2	5/2/2018	5/11/2018	<p>Issue: The land agent was notified that while the tree fellers were on this property, they cut a tree in the LOD which had vines growing up and onto a tree off the LOD. The tree fell and pulled the second tree halfway down and broke it. The chief inspector wanted the agent to notify the L/O</p> <p>Resolution: The agent spoke to the L/O and they stated that is was ok to go ahead and cut the second tree down and remove it. The tree has been cut and removed according to the land agent.</p>