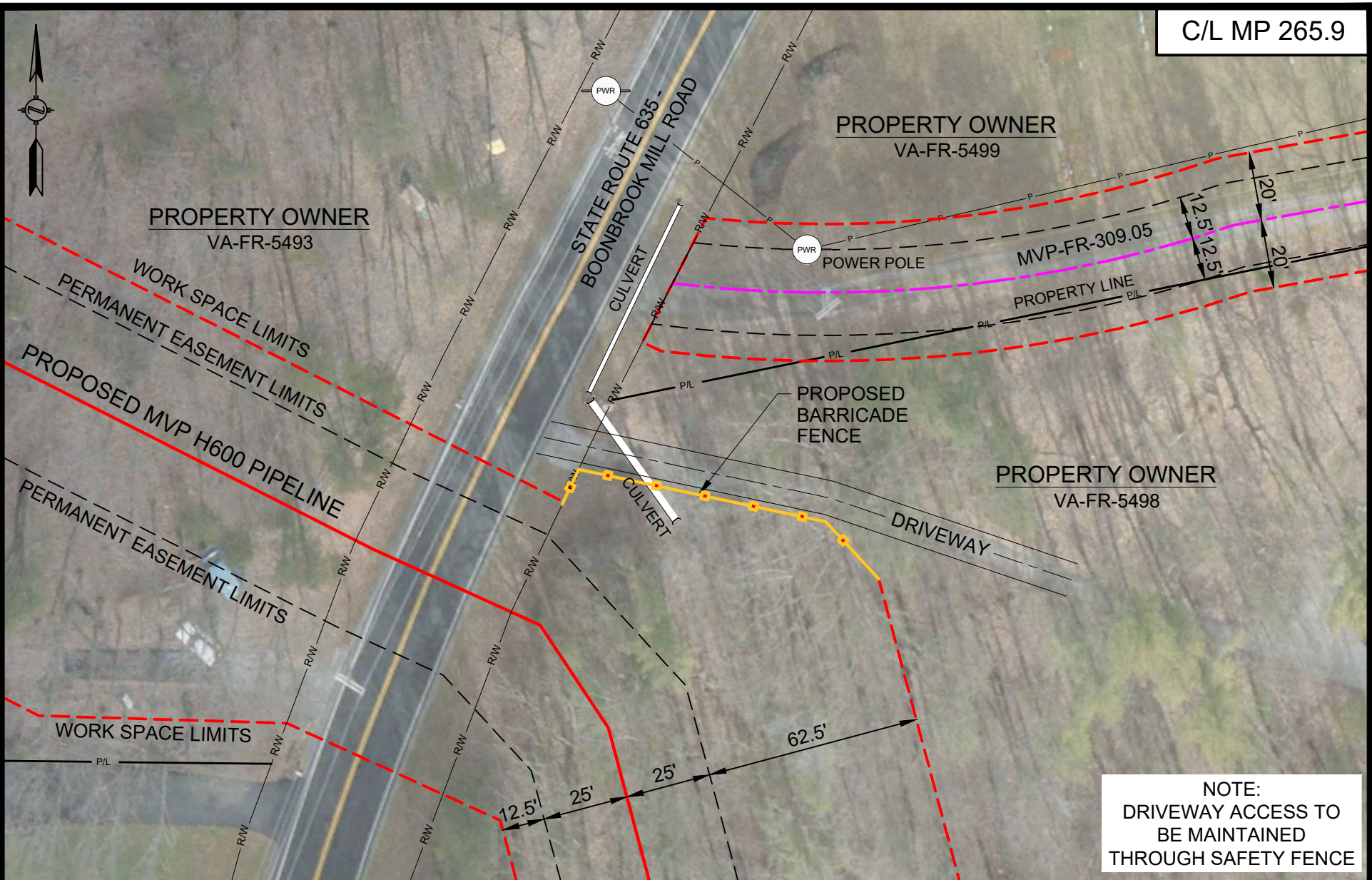


**Mountain Valley Pipeline, LLC
Mountain Valley Pipeline Project
Docket No. CP16-10-000**

**Implementation Plan
Dated October 2017**

Attachment IP-18b

C/L MP 265.9



NOTE:
 DRIVEWAY ACCESS TO
 BE MAINTAINED
 THROUGH SAFETY FENCE

HOLLAND
 ENGINEERING

220 Hoover Boulevard, Suite 2
 Holland, Michigan 49423-3766
 T 616-392-5938 F 616-392-2116

26555 Evergreen Rd, Suite. 430
 Southfield, Michigan 48076
 T 248-827-7322 F 248-827-7549

www.hollandengineering.com

HEI PROJECT NO.: 14-10-052



CONSTRUCTION DETAILS - RESIDENTIAL SITE SPECIFIC

**MOUNTAIN VALLEY PIPELINE PROJECT
 PROPOSED H-600 PIPELINE
 FRANKLIN COUNTY, VIRGINIA**

SHEET 1 OF 1

DRAWN BY: HEI(DRF)	07/21/17
DRAFTING CK:	
ENVIRONMENTAL CK:	
ENGINEERING CK:	
DETAIL SHEET: PA-FRVA-H600-22	
DRAWING NO.:	
RSS-H600-218	
SCALE: 1" = 40'	REV. 1
DATE OF PLOT: 8/30/2017 12:09 PM	