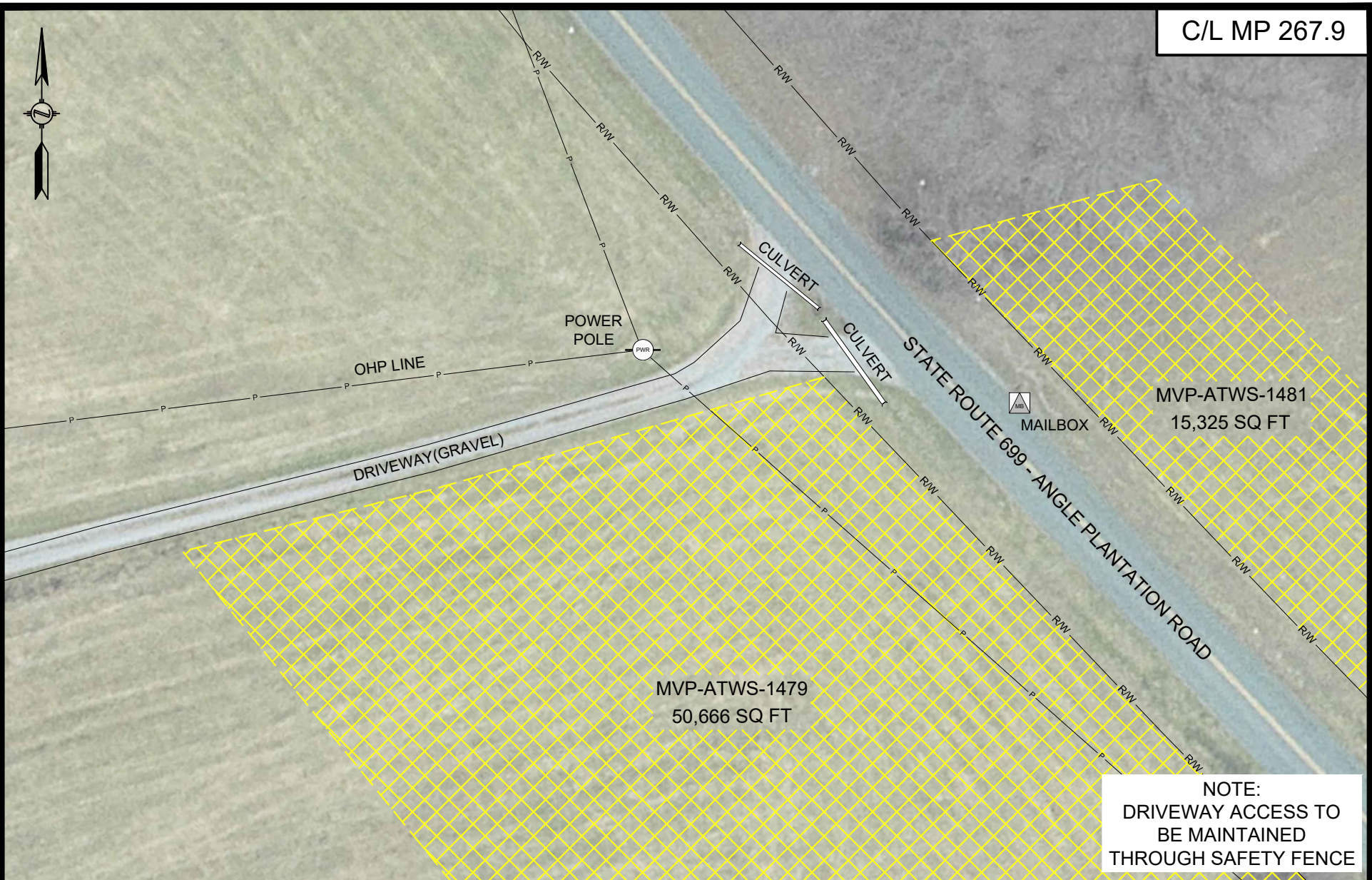


**Mountain Valley Pipeline, LLC  
Mountain Valley Pipeline Project  
Docket No. CP16-10-000**

**Implementation Plan  
Dated October 2017**

**Attachment IP-18d**

C/L MP 267.9



NOTE:  
DRIVEWAY ACCESS TO  
BE MAINTAINED  
THROUGH SAFETY FENCE

**HOLLAND**  
ENGINEERING

220 Hoover Boulevard, Suite 2  
Holland, Michigan 49423-3766  
T 616-392-5938 F 616-392-2116

26555 Evergreen Rd. Suite. 430  
Southfield, Michigan 48076  
T 248-827-7322 F 248-827-7549

www.hollandengineering.com

HEI PROJECT NO.: 14-10-052



CONSTRUCTION DETAILS - RESIDENTIAL SITE SPECIFIC

MOUNTAIN VALLEY PIPELINE PROJECT  
PROPOSED H-600 PIPELINE  
FRANKLIN COUNTY, VIRGINIA

SHEET 1 OF 1

DRAWN BY: HEI(DRF)	09/21/17
DRAFTING CK:	
ENVIRONMENTAL CK:	
ENGINEERING CK:	
ALIGN. SHEET: PA-FRVA-H600-24	
DRAWING NO.:	<b>RSS-H600-222</b>
SCALE: 1" = 40'	REV. 0
DATE OF PLOT: 9/21/2017 8:45 AM	